

UNIVERSAL CITY, TEXAS

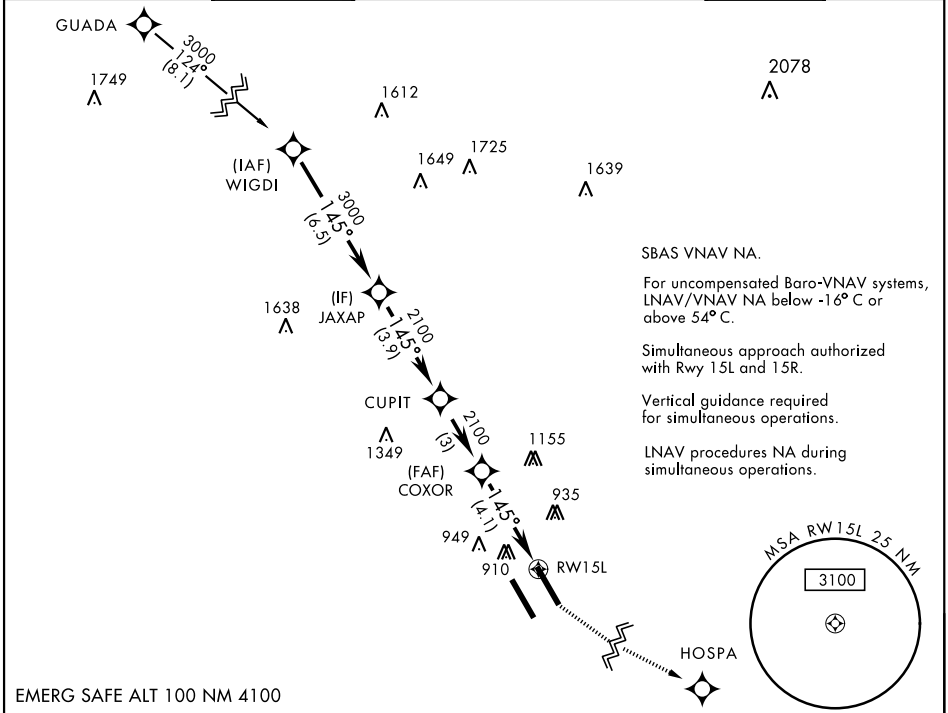
RNAV (GPS) RWY 15L

APCH CRS	Rwy Idg	8352
145°	TDZE	742
	Arpt Elev	761

AL-341 [USAF]

RANDOLPH AFB (KRND)

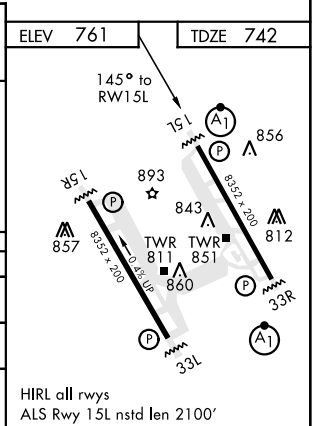
RNP APCH - GPS.		ALSF-1		MISSED APPROACH: Climb to 1500, then climbing left turn to 3000 direct HOSPA. Expect ATC instructions.			
*When ALS inop, increase vis to 1½ miles. **When ALS inop, increase CAT AB RVR to 55, vis to 1 mile; CAT CDE vis to 1½ miles. ***Circling not authorized SW of Rwy 15L-33R.							
ATIS ★	SAN ANTONIO APP CON	RANDOLPH TOWER ★	RANDOLPH GND CON	CLNC DEL (RWY 15L-33R)	HANGOVER ATIS ★	HANGOVER TOWER ★	HANGOVER GND CON
290.525	128.05 318.1	128.25 294.7	119.65 275.8	338.35	327.8	120.5 291.1	124.75 353.75



SBAS VNAV NA.
For uncompensated Baro-VNAV systems, LNAV/VNAV NA below -16° C or above 54° C.
Simultaneous approach authorized with Rwy 15L and 15R.
Vertical guidance required for simultaneous operations.
LNAV procedures NA during simultaneous operations.

EMERG SAFE ALT 100 NM 4100

	WIGDI		JAXAP		CUPIT		COXOR		RW15L	
	3000		3000		2100		2100		1500	
	145°		145°		145°		1.4 NM to RW15L		HOSPA	
	GP 3.00° TCH 46									
	6.5 NM		3.9 NM		3 NM		4.1 NM			
CATEGORY	A		B		C		D		E	
LNAV/VNAV DA*	1240/60		498 (500-1½)							
LNAV MDA**	1240/40 498 (500-¾)		1240/60		498 (500-1½)					
CIRCLING***	1240-1 479 (500-1)		1260-1½ 499 (500-1½)		1800-3		1039 (1100-3)			



UNIVERSAL CITY, TEXAS
Amdt 1 28JAN21

29°32'N-98°17'W

RANDOLPH AFB (KRND)

RNAV (GPS) RWY 15L

SC-3, 25 FEB 2021 to 25 MAR 2021

SC-3, 25 FEB 2021 to 25 MAR 2021