

# RNAV (GPS) RWY 33R

APCH CRS	Rwy Idg	<b>8352</b>
<b>325°</b>	TDZE	<b>733</b>
	Arpt Elev	<b>761</b>

AL-341 [USAF]

RANDOLPH AFB (KRND)

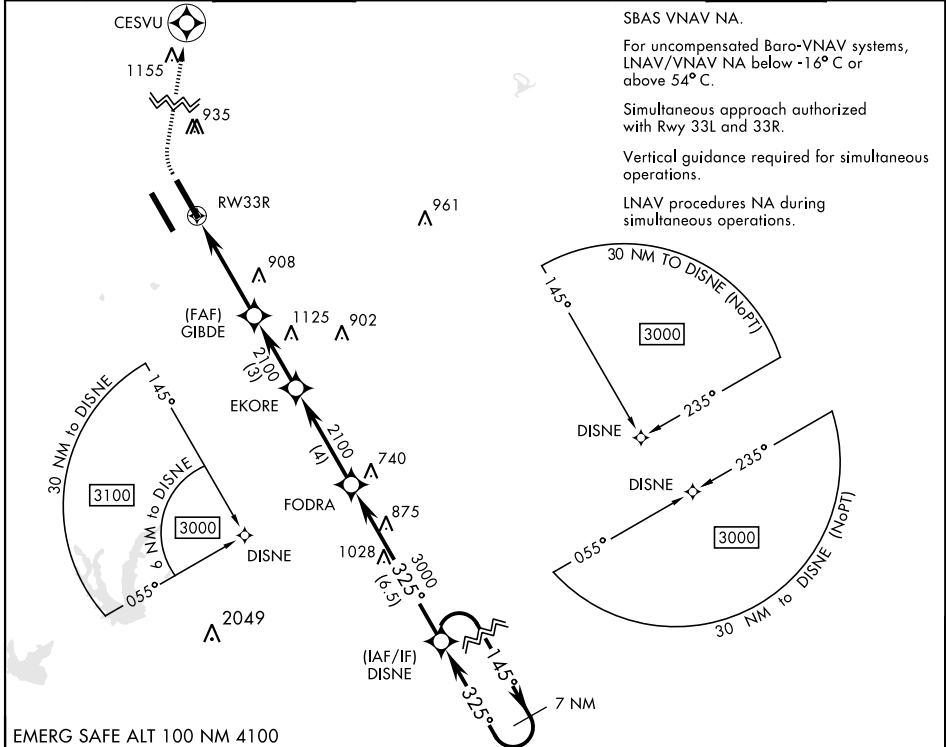
RNP APCH - GPS.

\* When ALS inop, increase vis to 1 1/4 miles.  
 \*\* When ALS inop, increase CAT AB RVR to 55 and vis to 1 mile,  
 CAT CDE vis to 1 3/8 miles.  
 \*\*\* Circling not authorized SW of Rwy 15L-33R.

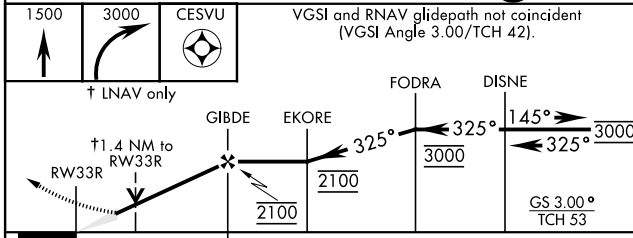


MISSED APPROACH: Climb to 1500 then climbing right turn to 3000 direct CESVU. Expect ATC instructions.

ATIS ★	SAN ANTONIO APP CON	RANDOLPH TOWER ★	RANDOLPH GND CON	CLNC DEL (RWY 15L-33R)	HANGOVER ATIS ★	HANGOVER TOWER ★	HANGOVER GND CON
<b>290.525</b>	<b>128.05 318.1</b>	<b>128.25 294.7</b>	<b>119.65 275.8</b>	<b>338.35</b>	<b>327.8</b>	<b>120.5 291.1</b>	<b>124.75 353.75</b>

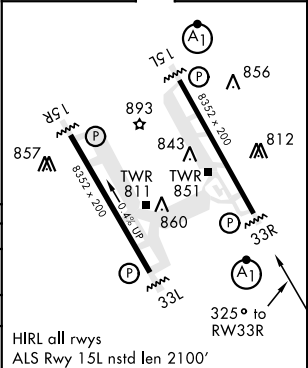


EMERG SAFE ALT 100 NM 4100



ELEV 761	TDZE 733
----------	----------

CATEGORY	A	B	C	D	E
LNAV/VNAV DA*	1079/30		346	(400-5%)	
LNAV MDA**	1200/24	467 (500-1/2)	1200/50	467 (500-1)	
CIRCLING***	1200-1 439 (500-1)	1220-1 459 (500-1)	1260-1 1/2 499 (500-1 1/2)	1800-3	1039 (1100-3)



# RNAV (GPS) RWY 33R

SC-3, 25 FEB 2021 to 25 MAR 2021

SC-3, 25 FEB 2021 to 25 MAR 2021