

TACAN RWY 33L

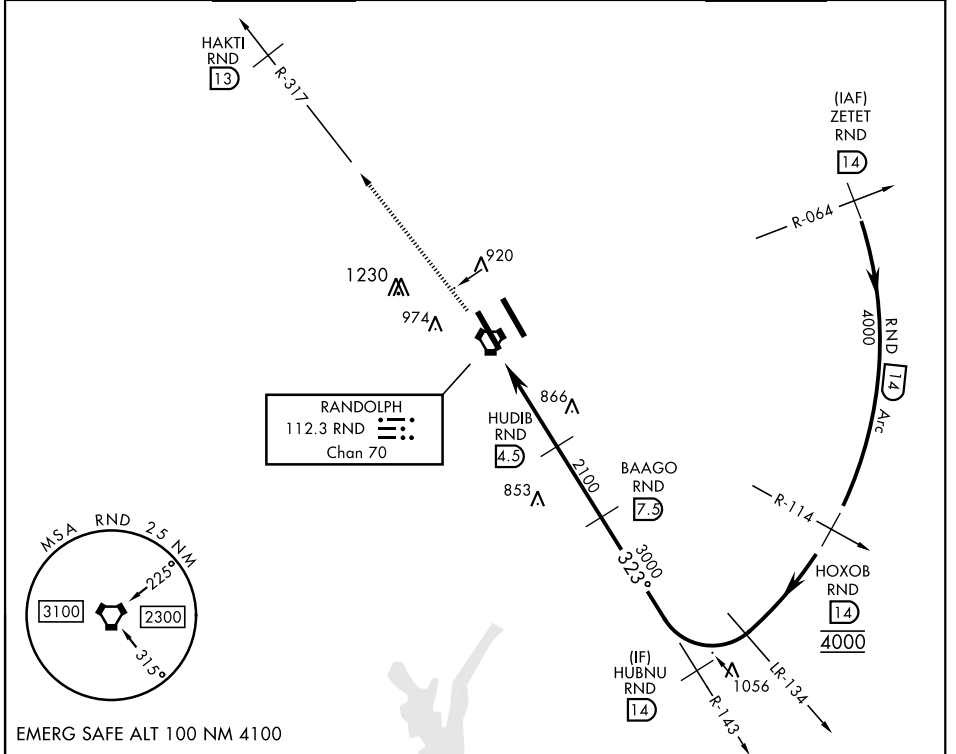
VORTAC RND 112.3 Chan 70	APCH CRS 323°	Rwy Idg TDZE Arprt Elev 8352 734 761	AL-341 [USAF]	RANDOLPH AFB (KRND)
--	-------------------------	--	---------------	---------------------

RADAR required.

* Circling not authorized NE of Rwy 15R-33L.

MISSED APPROACH: Climb to 3000 out RND VORTAC R-317 to RND 13 DME (HAKTI). Expect ATC instructions.

ATIS ★ 290.525	SAN ANTONIO APP CON 128.05 318.1	RANDOLPH TOWER ★ 128.25 294.7	RANDOLPH GND CON 119.65 275.8	CLNC DEL (RWY 15L-33R) 338.35	HANGOVER ATIS ★ 327.8	HANGOVER TOWER ★ 120.5 291.1	HANGOVER GND CON 124.75 353.75
--------------------------	--	---	---	---	---------------------------------	--	--



EMERG SAFE ALT 100 NM 4100

ELEV 761	TDZE 733	3000 RND R-317	HAKTI RND 13
----------	----------	----------------	--------------

HIRL all rwsy
ALS Rwy 15L nstd
len 2100'

Diagram showing HIRL layout with towers (TWR 811, TWR 851) and altitudes (893, 191, 332 x 200, 33R, 33L). Direction 323° from FAF.

VORTAC	HOSPO	HUDIB	BAAGO	HUBNU
1	2100	4.5	7.3	14
0.7	3.5 NM	3000	4000	

3.00° TCH 50

CATEGORY	A	B	C	D	E
S-33L	1120/55 387 (400-1)		1120/60 387 (400-1½)		
C CIRCLING*	1220-1 459 (500-1)	1280-1 519 (600-1)	1500-2 739 (800-2)	1800-3 1039 (1100-3)	

TACAN RWY 33L

SC-3, 25 FEB 2021 to 25 MAR 2021

SC-3, 25 FEB 2021 to 25 MAR 2021