

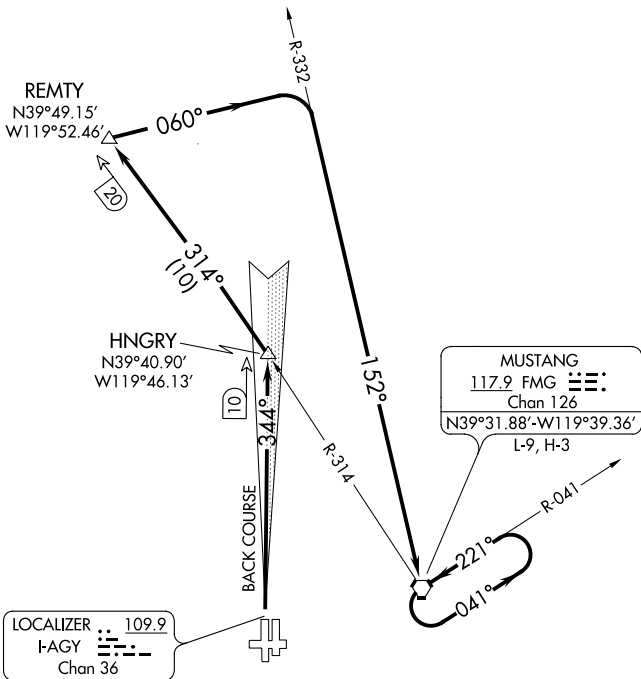
# HUNGRY THREE DEPARTURE

AL-346 (FAA)

RENO/TAHOE INTL (RNO)  
RENO, NEVADA

D-ATIS  
135.8 363.0  
CLNC DEL  
124.9 370.85  
CPDLC  
GND CON  
121.9 348.6  
RENO TOWER  
118.7 257.8  
NORCAL DEP CON  
126.3 353.9

**TOP ALTITUDE:  
10000**



### TAKEOFF MINIMUMS

Rwy 7: NA- obstacles

Rwys 16L, 16R, 25: NA-ATC.

Rwy 34L: Standard with minimum climb of 315' per NM to 8400.

Rwy 34R: Standard with minimum climb of 480' per NM to 8400,  
or 500-1½ with minimum climb of 315' per NM to 8400.

NOTE: DME required.

NOTE: Chart not to scale.

### DEPARTURE ROUTE DESCRIPTION

**TAKEOFF RUNWAYS 34L/R:** Climb to 10000 or assigned altitude via I-AGY localizer north course to HNGRY INT/I-AGY 10 DME, and intercept FMG R-314 to REMTY/FMG 20 DME, and right turn heading 060° to intercept FMG R-332 to FMG VORTAC. Climb in FMG holding pattern to depart FMG VORTAC at or above MEA/MCA for route of flight. Expect clearance to requested altitude five minutes after departure.

# HUNGRY THREE DEPARTURE

SW-4, 25 FEB 2021 to 25 MAR 2021

SW-4, 25 FEB 2021 to 25 MAR 2021