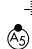


ILS X or LOC X RWY 16R

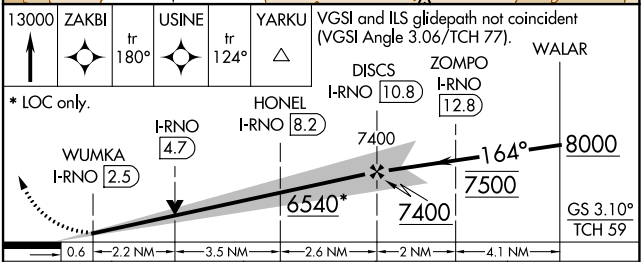
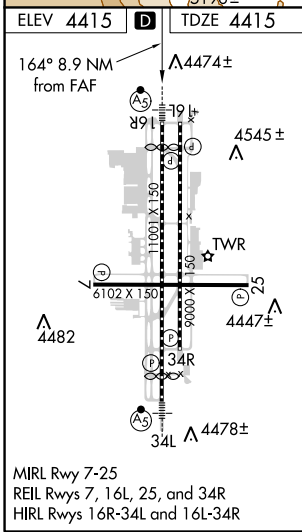
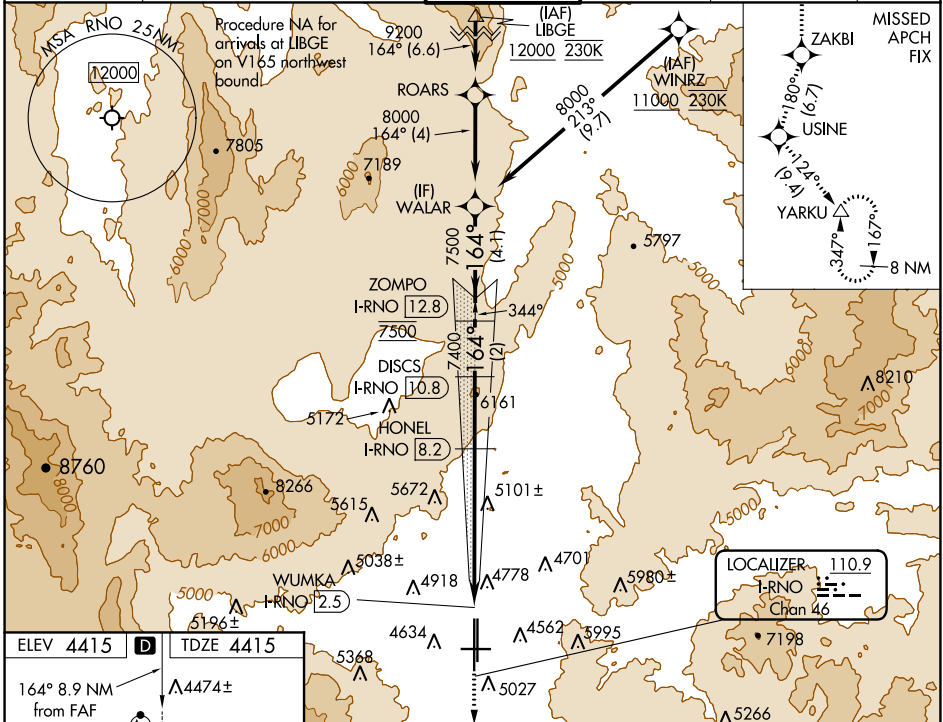
RENO/TAHOE INTL (RNO)

LOC/DME I-RNO 110.9 Chan 46	APP CRS 164°	Rwy Idg 10011 TDZE 4415 Apt Elev 4415
---	------------------------	--

⚠ DME/DME RNP-0.3 NA. RNAV 1-GPS required.
⚠ DME required. Circling Rwy 7 NA at night.
⚠ -15°C # For inop MALSRL, increase S-ILS 16R all Cats visibility to 2½ mile.
 † RVR 1800 authorized with use of FD or AP or HUD to DA.

MALSRL

MISSED APPROACH: Climb to 13000 on the RNAV missed approach route to YARKU and hold, continue climb-in-hold to 13000.
 † Missed approach requires minimum climb of 390 feet per NM to 8000.

D-ATIS 135.8 363.0	NORCAL APP CON 119.2 279.55 126.3 353.9	RENO TOWER 118.7 257.8	GND CON 121.9 348.6	CLNC DEL 124.9 370.85	CPDLC
------------------------------	---	----------------------------------	-------------------------------	---------------------------------	-------



CATEGORY	A	B	C	D
S-ILS 16R †		4615/24	200 (200-½)	
S-ILS 16R #		5138-1⅞	723 (800-1⅞)	
S-LOC 16R	5420/40 1005 (1100-¾)	5420/55 1005 (1100-1)	5420-2½	1005 (1100-2½)
C CIRCLING	5420-1¼ 1005 (1100-¼)	5420-1½ 1005 (1100-½)	6480-3	2065 (2100-3)

SW-4, 25 FEB 2021 to 25 MAR 2021

SW-4, 25 FEB 2021 to 25 MAR 2021