

LOC/DME I-RNO 110.9 Chan 46	APP CRS 164°	Rwy Idg TDZE 4415 Apt Elev 4415
---	------------------------	--

ILS Y RWY 16R

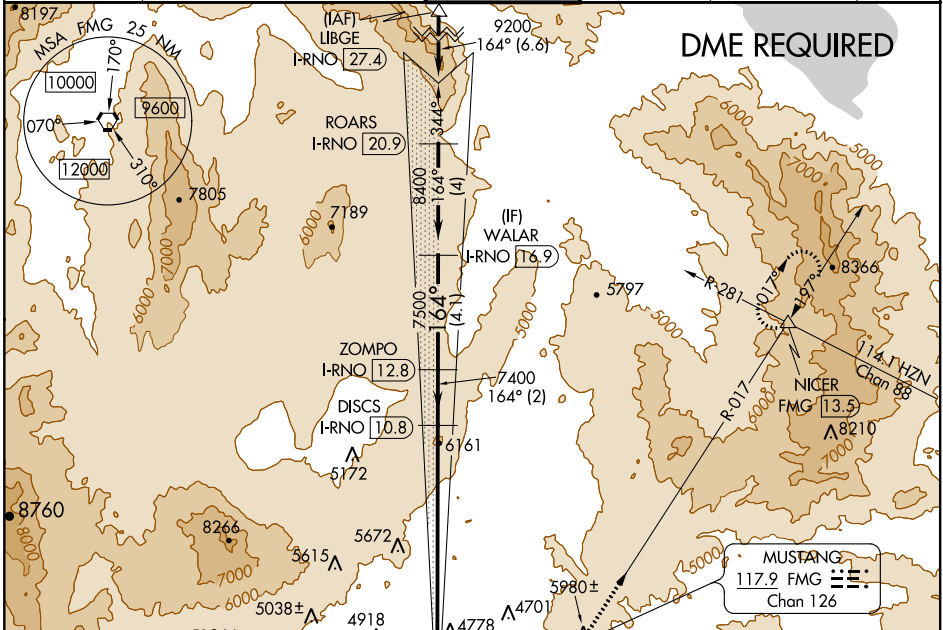
RENO/TAHOE INTL (RNO)

Inop table does not apply.
† For inop MALSR, increase
-15°C S-ILS R16R all Cats
visibility to 1 1/8 mile.

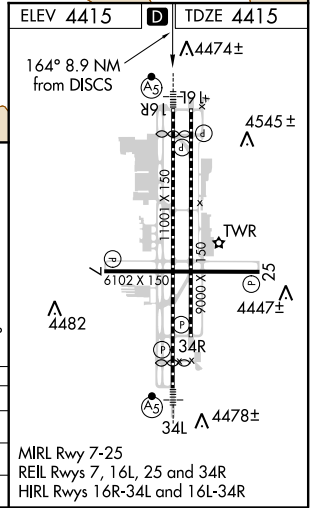
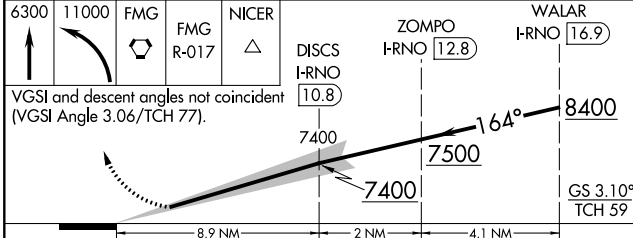
MALSR
AS

MISSED APPROACH: Climb to 6300 then climbing left turn to 11000 direct FMG VORTAC and on FMG VORTAC R-017 to NICER INT/FMG 13.5 DME and Hdg.
* Missed approach requires a minimum climb of 350 feet per NM to 8000.
** Missed approach requires a minimum climb of 275 feet per NM to 8000.

D-ATIS 135.8 363.0	NORCAL APP CON 119.2 279.55 126.3 353.9	RENO TOWER 118.7 257.8	GND CON 121.9 348.6	CLNC DEL 124.9 370.85	CPDLC
------------------------------	---	----------------------------------	-------------------------------	---------------------------------	-------



ELEV 4415	TDZE 4415
6300	11000
FMG	NICER
FMG R-017	
DISCS I-RNO 10.8	ZOMPO I-RNO 12.8
WALAR I-RNO 16.9	



CATEGORY	A	B	C	D	E
S-ILS 16R *†	4915/60 500 (500-1 1/4)				
S-ILS 16R **‡	5415-4 1000 (1000-4)				
S-ILS 16R #	5915-6 1500 (1500-6)				

SW-4, 25 FEB 2021 to 25 MAR 2021

SW-4, 25 FEB 2021 to 25 MAR 2021