


# ILS Z or LOC Z RWY 16R

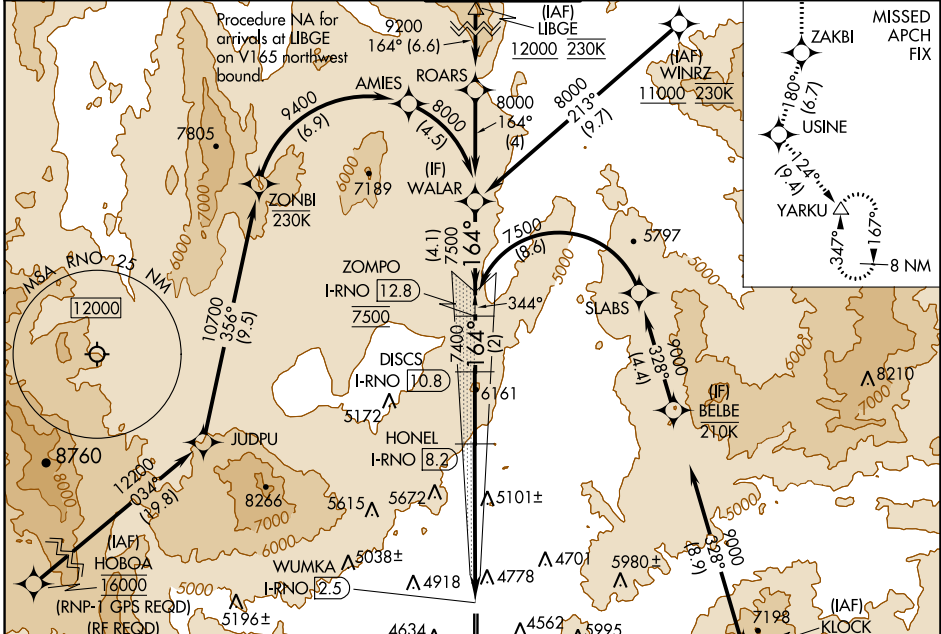
RENO/TAHOE INTL (RNO)

LOC/DME I-RNO <b>110.9</b> Chan <b>46</b>	APP CRS <b>164°</b>	Rwy Idg TDZE Apt Elev	<b>1001</b> <b>4415</b> <b>4415</b>
---	------------------------	-----------------------------	---

**⚠** Circling Rwy 7 NA at night. DME/DME RNP-0.3 NA. DME required. RNAV 1-GPS required.  
**⚠** -15°C # For inop MALS/R, increase S-ILS 16R all Cats visibility to 2 1/2 mile.  
 † RVR 1800 authorized with use of FD or AP or HUD to DA.

**MALS/R**  
  
 MISSED APPROACH: Climb to 13000 on the RNAV missed approach route to YARKU and hold, continue climb-in-hold to 13000.  
 † Missed approach requires a minimum climb of 390 feet per NM to 8000.

D-ATIS <b>135.8 363.0</b>	NORCAL APP CON <b>119.2 279.55 126.3 353.9</b>	RENO TOWER <b>118.7 257.8</b>	GND CON <b>121.9 348.6</b>	CLNC DEL <b>124.9 370.85</b>	CPDLC
------------------------------	---	----------------------------------	-------------------------------	---------------------------------	-------



ELEV <b>4415</b>	<b>D</b> TDZE <b>4415</b>
164° 8.9 NM from FAF	13000 ZAKBI
19° 19'	USINE
151° 06'	YARKU
151° 00'	DISCS I-RNO [10.8]
151° 00'	ZOMPO I-RNO [12.8]
151° 00'	WALAR
151° 00'	HONEL I-RNO [8.2]
151° 00'	WUMKA I-RNO [2.5]
151° 00'	JUDPU
151° 00'	HOBQA
151° 00'	SLABS
151° 00'	BELBE
151° 00'	KLOCK
151° 00'	ZAKBI
151° 00'	USINE
151° 00'	YARKU
151° 00'	DISCS
151° 00'	ZOMPO
151° 00'	WALAR
151° 00'	HONEL
151° 00'	WUMKA
151° 00'	JUDPU
151° 00'	HOBQA
151° 00'	SLABS
151° 00'	BELBE
151° 00'	KLOCK
151° 00'	ZAKBI
151° 00'	USINE
151° 00'	YARKU
151° 00'	DISCS
151° 00'	ZOMPO
151° 00'	WALAR
151° 00'	HONEL
151° 00'	WUMKA
151° 00'	JUDPU
151° 00'	HOBQA
151° 00'	SLABS
151° 00'	BELBE
151° 00'	KLOCK
151° 00'	ZAKBI
151° 00'	USINE
151° 00'	YARKU
151° 00'	DISCS
151° 00'	ZOMPO
151° 00'	WALAR
151° 00'	HONEL
151° 00'	WUMKA
151° 00'	JUDPU
151° 00'	HOBQA
151° 00'	SLABS
151° 00'	BELBE
151° 00'	KLOCK
151° 00'	ZAKBI
151° 00'	USINE
151° 00'	YARKU
151° 00'	DISCS
151° 00'	ZOMPO
151° 00'	WALAR
151° 00'	HONEL
151° 00'	WUMKA
151° 00'	JUDPU
151° 00'	HOBQA
151° 00'	SLABS
151° 00'	BELBE
151° 00'	KLOCK
151° 00'	ZAKBI
151° 00'	USINE
151° 00'	YARKU
151° 00'	DISCS
151° 00'	ZOMPO
151° 00'	WALAR
151° 00'	HONEL
151° 00'	WUMKA
151° 00'	JUDPU
151° 00'	HOBQA
151° 00'	SLABS
151° 00'	BELBE
151° 00'	KLOCK
151° 00'	ZAKBI
151° 00'	USINE
151° 00'	YARKU
151° 00'	DISCS
151° 00'	ZOMPO
151° 00'	WALAR
151° 00'	HONEL
151° 00'	WUMKA
151° 00'	JUDPU
151° 00'	HOBQA
151° 00'	SLABS
151° 00'	BELBE
151° 00'	KLOCK
151° 00'	ZAKBI
151° 00'	USINE
151° 00'	YARKU
151° 00'	DISCS
151° 00'	ZOMPO
151° 00'	WALAR
151° 00'	HONEL
151° 00'	WUMKA
151° 00'	JUDPU
151° 00'	HOBQA
151° 00'	SLABS
151° 00'	BELBE
151° 00'	KLOCK
151° 00'	ZAKBI
151° 00'	USINE
151° 00'	YARKU
151° 00'	DISCS
151° 00'	ZOMPO
151° 00'	WALAR
151° 00'	HONEL
151° 00'	WUMKA
151° 00'	JUDPU
151° 00'	HOBQA
151° 00'	SLABS
151° 00'	BELBE
151° 00'	KLOCK
151° 00'	ZAKBI
151° 00'	USINE
151° 00'	YARKU
151° 00'	DISCS
151° 00'	ZOMPO
151° 00'	WALAR
151° 00'	HONEL
151° 00'	WUMKA
151° 00'	JUDPU
151° 00'	HOBQA
151° 00'	SLABS
151° 00'	BELBE
151° 00'	KLOCK
151° 00'	ZAKBI
151° 00'	USINE
151° 00'	YARKU
151° 00'	DISCS
151° 00'	ZOMPO
151° 00'	WALAR
151° 00'	HONEL
151° 00'	WUMKA
151° 00'	JUDPU
151° 00'	HOBQA
151° 00'	SLABS
151° 00'	BELBE
151° 00'	KLOCK
151° 00'	ZAKBI
151° 00'	USINE
151° 00'	YARKU
151° 00'	DISCS
151° 00'	ZOMPO
151° 00'	WALAR
151° 00'	HONEL
151° 00'	WUMKA
151° 00'	JUDPU
151° 00'	HOBQA
151° 00'	SLABS
151° 00'	BELBE
151° 00'	KLOCK
151° 00'	ZAKBI
151° 00'	USINE
151° 00'	YARKU
151° 00'	DISCS
151° 00'	ZOMPO
151° 00'	WALAR
151° 00'	HONEL
151° 00'	WUMKA
151° 00'	JUDPU
151° 00'	HOBQA
151° 00'	SLABS
151° 00'	BELBE
151° 00'	KLOCK
151° 00'	ZAKBI
151° 00'	USINE
151° 00'	YARKU
151° 00'	DISCS
151° 00'	ZOMPO
151° 00'	WALAR
151° 00'	HONEL
151° 00'	WUMKA
151° 00'	JUDPU
151° 00'	HOBQA
151° 00'	SLABS
151° 00'	BELBE
151° 00'	KLOCK
151° 00'	ZAKBI
151° 00'	USINE
151° 00'	YARKU
151° 00'	DISCS
151° 00'	ZOMPO
151° 00'	WALAR
151° 00'	HONEL
151° 00'	WUMKA
151° 00'	JUDPU
151° 00'	HOBQA
151° 00'	SLABS
151° 00'	BELBE
151° 00'	KLOCK
151° 00'	ZAKBI
151° 00'	USINE
151° 00'	YARKU
151° 00'	DISCS
151° 00'	ZOMPO
151° 00'	WALAR
151° 00'	HONEL
151° 00'	WUMKA
151° 00'	JUDPU
151° 00'	HOBQA
151° 00'	SLABS
151° 00'	BELBE
151° 00'	KLOCK
151° 00'	ZAKBI
151° 00'	USINE
151° 00'	YARKU
151° 00'	DISCS
151° 00'	ZOMPO
151° 00'	WALAR
151° 00'	HONEL
151° 00'	WUMKA
151° 00'	JUDPU
151° 00'	HOBQA
151° 00'	SLABS
151° 00'	BELBE
151° 00'	KLOCK
151° 00'	ZAKBI
151° 00'	USINE
151° 00'	YARKU
151° 00'	DISCS
151° 00'	ZOMPO
151° 00'	WALAR
151° 00'	HONEL
151° 00'	WUMKA
151° 00'	JUDPU
151° 00'	HOBQA
151° 00'	SLABS
151° 00'	BELBE
151° 00'	KLOCK
151° 00'	ZAKBI
151° 00'	USINE
151° 00'	YARKU
151° 00'	DISCS
151° 00'	ZOMPO
151° 00'	WALAR
151° 00'	HONEL
151° 00'	WUMKA
151° 00'	JUDPU
151° 00'	HOBQA
151° 00'	SLABS
151° 00'	BELBE
151° 00'	KLOCK
151° 00'	ZAKBI
151° 00'	USINE
151° 00'	YARKU
151° 00'	DISCS
151° 00'	ZOMPO
151° 00'	WALAR
151° 00'	HONEL
151° 00'	WUMKA
151° 00'	JUDPU
151° 00'	HOBQA
151° 00'	SLABS
151° 00'	BELBE
151° 00'	KLOCK
151° 00'	ZAKBI
151° 00'	USINE
151° 00'	YARKU
151° 00'	DISCS
151° 00'	ZOMPO
151° 00'	WALAR
151° 00'	HONEL
151° 00'	WUMKA
151° 00'	JUDPU
151° 00'	HOBQA
151° 00'	SLABS
151° 00'	BELBE
151° 00'	KLOCK
151° 00'	ZAKBI
151° 00'	USINE
151° 00'	YARKU
151° 00'	DISCS
151° 00'	ZOMPO
151° 00'	WALAR
151° 00'	HONEL
151° 00'	WUMKA
151° 00'	JUDPU
151° 00'	HOBQA
151° 00'	SLABS
151° 00'	BELBE
151° 00'	KLOCK
151° 00'	ZAKBI
151° 00'	USINE
151° 00'	YARKU
151° 00'	DISCS
151° 00'	ZOMPO
151° 00'	WALAR
151° 00'	HONEL
151° 00'	WUMKA
151° 00'	JUDPU
151° 00'	HOBQA
151° 00'	SLABS
151° 00'	BELBE
151° 00'	KLOCK
151° 00'	ZAKBI
151° 00'	USINE
151° 00'	YARKU
151° 00'	DISCS
151° 00'	ZOMPO
151° 00'	WALAR
151° 00'	HONEL
151° 00'	WUMKA
151° 00'	JUDPU
151° 00'	HOBQA
151° 00'	SLABS
151° 00'	BELBE
151° 00'	KLOCK
151° 00'	ZAKBI
151° 00'	USINE
151° 00'	YARKU
151° 00'	DISCS
151° 00'	ZOMPO
151° 00'	WALAR
151° 00'	HONEL
151° 00'	WUMKA
151° 00'	JUDPU
151° 00'	HOBQA
151° 00'	SLABS
151° 00'	BELBE
151° 00'	KLOCK
151° 00'	ZAKBI
151° 00'	USINE
151° 00'	YARKU
151° 00'	DISCS
151° 00'	ZOMPO
151° 00'	WALAR
151° 00'	HONEL
151° 00'	WUMKA
151° 00'	JUDPU
151° 00'	HOBQA
151° 00'	SLABS
151° 00'	BELBE
151° 00'	KLOCK
151° 00'	ZAKBI
151° 00'	USINE
151° 00'	YARKU
151° 00'	DISCS
151° 00'	ZOMPO
151° 00'	WALAR
151° 00'	HONEL
151° 00'	WUMKA
151° 00'	JUDPU
151° 00'	HOBQA
151° 00'	SLABS
151° 00'	BELBE
151° 00'	KLOCK
151° 00'	ZAKBI
151° 00'	USINE
151° 00'	YARKU
151° 00'	DISCS
151° 00'	ZOMPO
151° 00'	WALAR
151° 00'	HONEL
151° 00'	WUMKA
151° 00'	JUDPU
151° 00'	HOBQA
151° 00'	SLABS
151° 00'	BELBE
151° 00'	KLOCK
151° 00'	ZAKBI
151° 00'	USINE
151° 00'	YARKU
151° 00'	DISCS
151° 00'	ZOMPO
151° 00'	WALAR
151° 00'	HONEL
151° 00'	WUMKA
151° 00'	JUDPU
151° 00'	HOBQA
151° 00'	SLABS
151° 00'	BELBE
151° 00'	KLOCK
151° 00'	ZAKBI
151° 00'	USINE
151° 00'	YARKU
151° 00'	DISCS
151° 00'	ZOMPO
151° 00'	WALAR
151° 00'	HONEL
151° 00'	WUMKA
151° 00'	JUDPU
151° 00'	HOBQA
151° 00'	SLABS
151° 00'	BELBE
151° 00'	KLOCK
151° 00'	ZAKBI
151° 00'	USINE
151° 00'	YARKU
151° 00'	DISCS
151° 00'	ZOMPO
151° 00'	WALAR
151° 00'	HONEL
151° 00'	WUMKA
151° 00'	JUDPU
151° 00'	HOBQA
151° 00'	SLABS
151° 00'	