

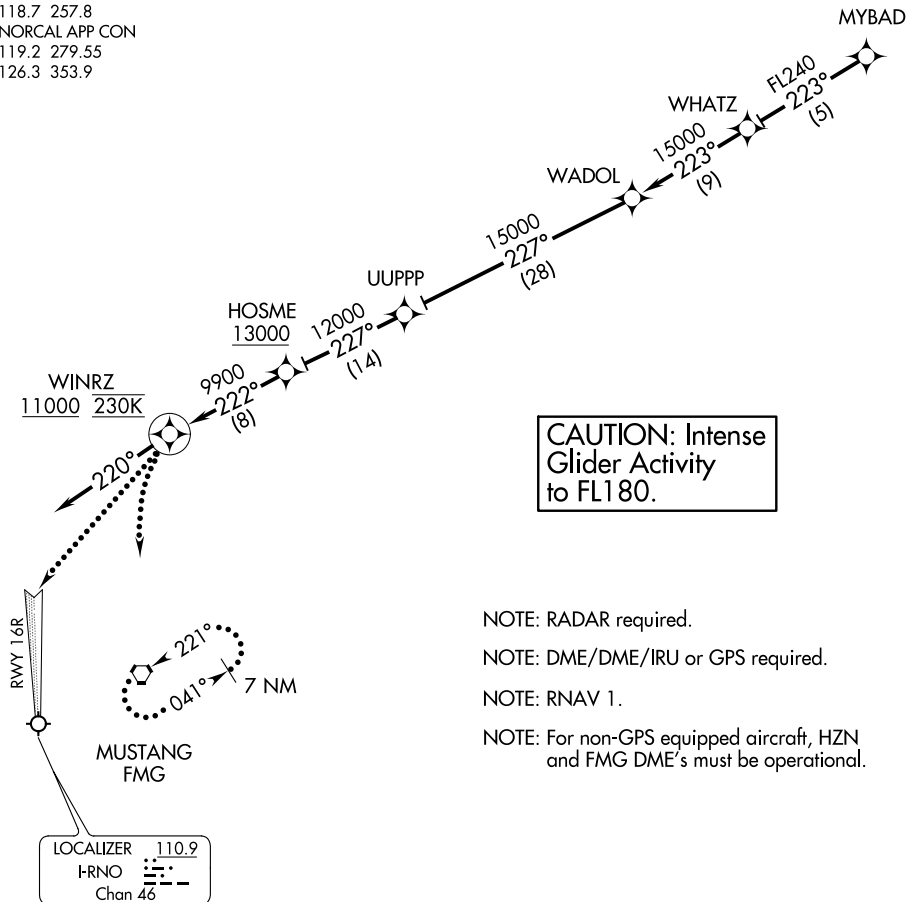
(MYBAD.MYBAD2) 17173

MYBAD TWO ARRIVAL (RNAV)

AL-346 (FAA)

RENO/TAHOE INTL (RNO)
RENO, NEVADA

D-ATIS
135.8 363.0
RENO TOWER
118.7 257.8
NORCAL APP CON
119.2 279.55
126.3 353.9



**CAUTION: Intense
Glider Activity
to FL180.**

NOTE: RADAR required.

NOTE: DME/DME/IRU or GPS required.

NOTE: RNAV 1.

NOTE: For non-GPS equipped aircraft, HZN and FMG DME's must be operational.

NOTE: Chart not to scale.

ARRIVAL ROUTE DESCRIPTION

From MYBAD on track 223° to WHATZ, then as depicted to cross WINRZ at or above 11000 at 230 KTS, then on heading 220°. Rwy 16R/16L expect RADAR vectors to final approach course.

LOST COMMUNICATIONS

At WINRZ, proceed inbound via RWY 16R ILS approach. If unable, climbing left turn to 12000 direct to FMG VORTAC and hold. Continue climb in hold to 12000.

MYBAD TWO ARRIVAL (RNAV)

(MYBAD.MYBAD2) 05APR12

RENO, NEVADA
RENO/TAHOE INTL (RNO)

SW-4, 25 FEB 2021 to 25 MAR 2021

SW-4, 25 FEB 2021 to 25 MAR 2021