

APP CRS	Rwy Idg	<b>9000</b>
<b>164°</b>	TDZE	<b>4415</b>
	Apt Elev	<b>4415</b>

# RNAV (RNP) Y RWY 16L

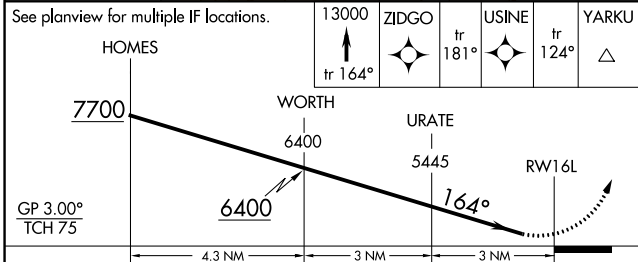
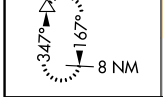
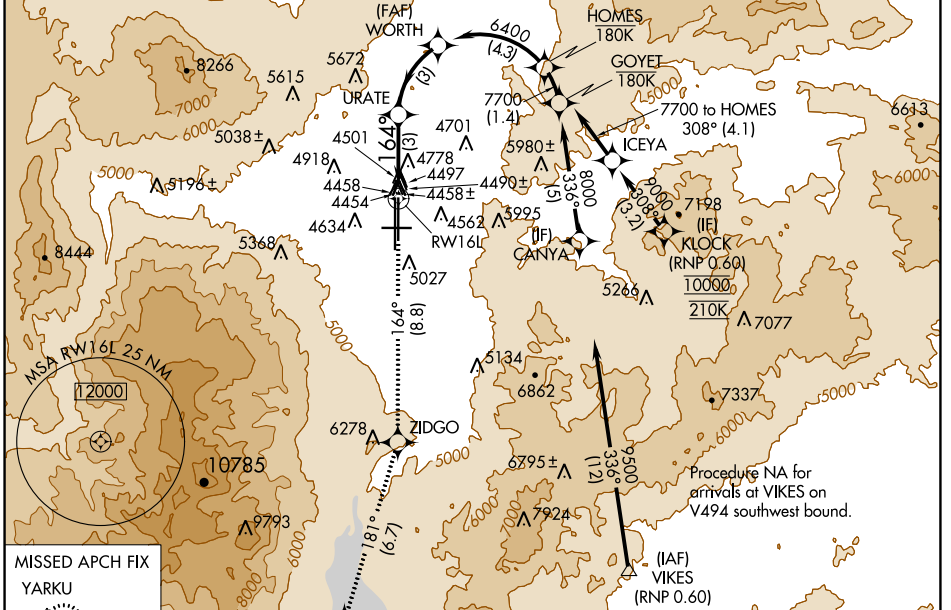
RENO/TAHOE INTL (RNO)

RNP AR APCH.  
RF required.

**⚠** For uncompensated Baro-VNAV systems, procedure NA below -14°C or above 44°C.  
**❄** -15°C

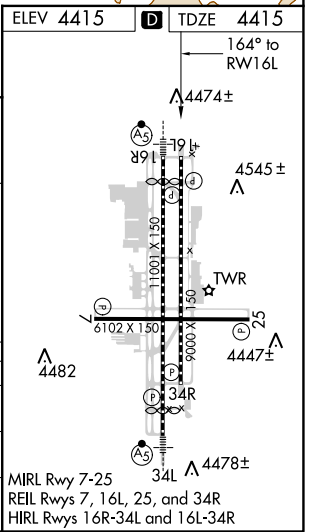
MISSED APPROACH: Climb to 13000 on track 164° to ZIDGO and on track 181° to USINE and on track 124° to YARKU and hold, continue climb-in-hold to 13000.  
\* Missed approach requires minimum climb of 252 feet per NM to 7200.

D-ATIS	NORCAL APP CON	RENO TOWER	GND CON	CLNC DEL	CPDLC
<b>135.8 363.0</b>	<b>119.2 279.55 126.3 353.9</b>	<b>118.7 257.8</b>	<b>121.9 348.6</b>	<b>124.9 370.85</b>	



CATEGORY	A	B	C	D
RNP 0.12 DA*		4792-1½	377 (400-1½)	
RNP 0.30 DA		5127-2½	712 (800-2½)	

**AUTHORIZATION REQUIRED**



SW-4, 25 FEB 2021 to 25 MAR 2021

SW-4, 25 FEB 2021 to 25 MAR 2021