


RNAV (RNP) Y RWY 16R

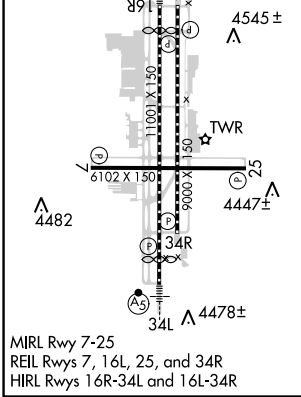
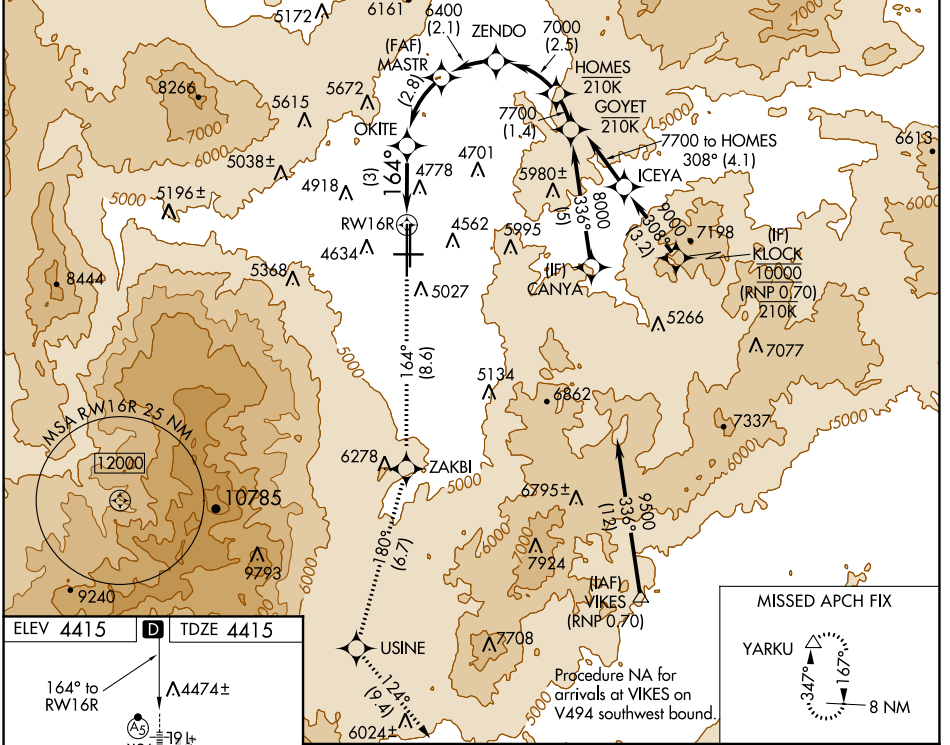
RENO/TAHOE INTL (RNO)

APP CRS	Rwy Idg	10001
164°	TDZE	4415
	Apt Elev	4415

For uncompensated Baro-VNAV systems, procedure NA below -14°C (7°F) or above 36°C (98°F). For inoperative MALSR, increase RNP 0.17 all Cats visibility to 1 1/4 and RNP 0.30 all Cats visibility to 2 1/2. RF required. *Missed approach requires a minimum climb of 260 feet per NM to 7000.

MALSR

MISSED APPROACH: Climb to 13000 on track 164° to ZAKBI and on track 180° to USINE and on track 124° to YARKU and hold, continue climb-in-hold to 13000.

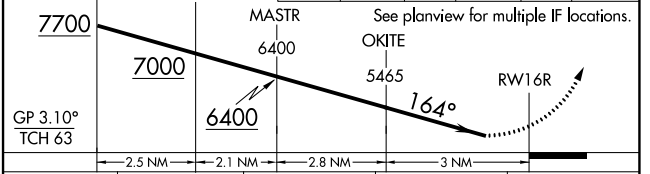
D-ATIS	NORCAL APP CON	RENO TOWER	GND CON	CLNC DEL	CPDLC
135.8 363.0	119.2 279.55 126.3 353.9	118.7 257.8	121.9 348.6	124.9 370.85	



ELEV 4415	D	TDZE 4415
-----------	----------	-----------

VGSI and RNAV glidepath not coincident (VGSI Angle 3.06/TCH 77).

13000	ZAKBI	USINE	YARKU
↑	✧	✧	△
tr 164°	tr 180°	tr 124°	



CATEGORY	A	B	C	D
RNP 0.17 DA*	4817/40 402 (500-¾)			
RNP 0.30 DA	5132-1 7/8 717 (800-1 1/2)			

AUTHORIZATION REQUIRED

SW-4, 25 FEB 2021 to 25 MAR 2021

SW-4, 25 FEB 2021 to 25 MAR 2021