

# RNAV (RNP) Z RWY 16L

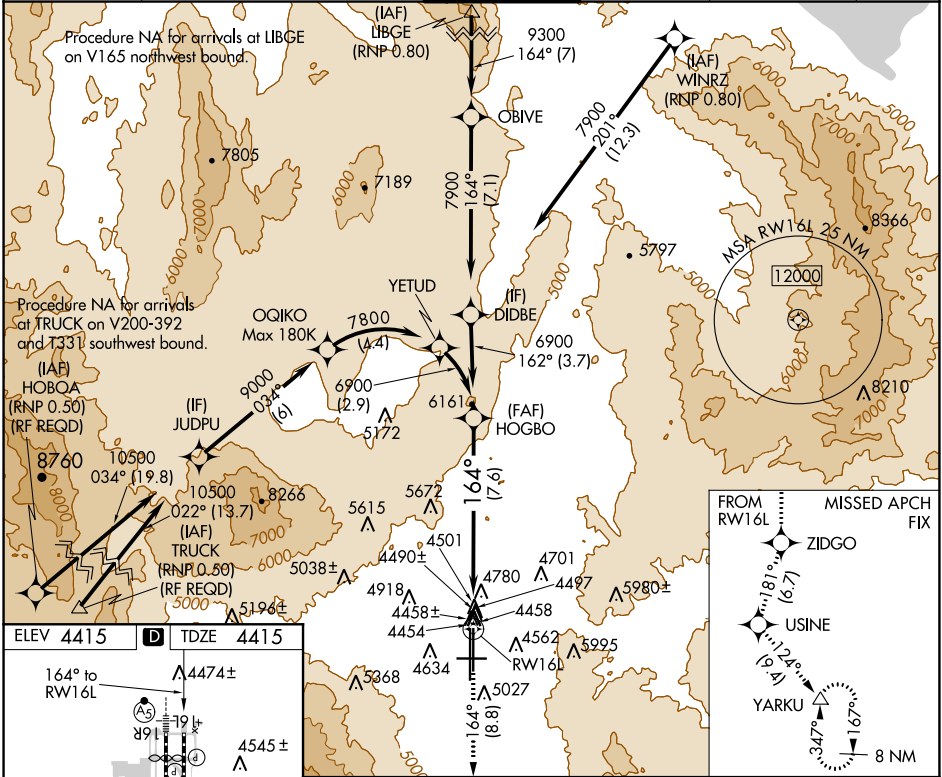
RENO/TAHOE INTL (RNO)

|             |          |             |
|-------------|----------|-------------|
| APP CRS     | Rwy Idg  | <b>9000</b> |
| <b>164°</b> | TDZE     | <b>4415</b> |
|             | Apt Elev | <b>4415</b> |

For uncompensated Baro-VNAV systems, procedure NA below -16°C (4°F) or above 54°C (130°F). When VGSI inop, procedure NA at night. GPS required. \*Missed approach requires a minimum climb of 259 feet per NM to 7000.

MISSED APPROACH: Climb to 13000 on track 164° to ZIDGO and on track 181° to USINE and on track 124° to YARKU and hold, continue climb-in-hold to 13000.

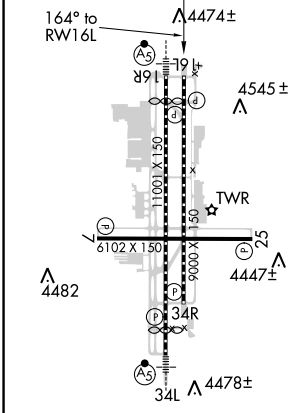
|                    |                                 |                    |                    |                     |       |
|--------------------|---------------------------------|--------------------|--------------------|---------------------|-------|
| D-ATIS             | NORCAL APP CON                  | RENO TOWER         | GND CON            | CLNC DEL            | CPDLC |
| <b>135.8 363.0</b> | <b>119.2 279.55 126.3 353.9</b> | <b>118.7 257.8</b> | <b>121.9 348.6</b> | <b>124.9 370.85</b> |       |



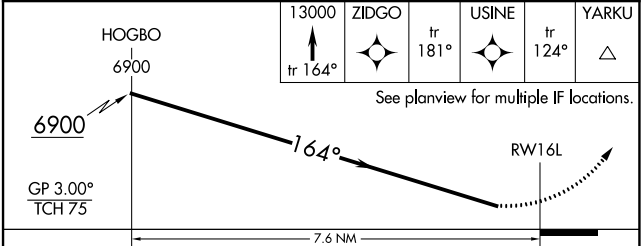
SW-4, 25 FEB 2021 to 25 MAR 2021

SW-4, 25 FEB 2021 to 25 MAR 2021

|      |             |      |             |
|------|-------------|------|-------------|
| ELEV | <b>4415</b> | TDZE | <b>4415</b> |
|------|-------------|------|-------------|



MIRL Rwy 7-25  
REIL Rws 7, 16L, 25, and 34R  
HIRL Rws 16R-34L and 16L-34R



|              |            |                 |   |    |
|--------------|------------|-----------------|---|----|
| CATEGORY     | A          | B               | C | D  |
| RNP 0.12 DA* | 4796-1 1/8 | 381 (400-1 1/8) |   | NA |
| RNP 0.30 DA  | 5133-2 1/2 | 718 (800-2 1/2) |   | NA |

## AUTHORIZATION REQUIRED