

RNAV (RNP) Z RWY 34R

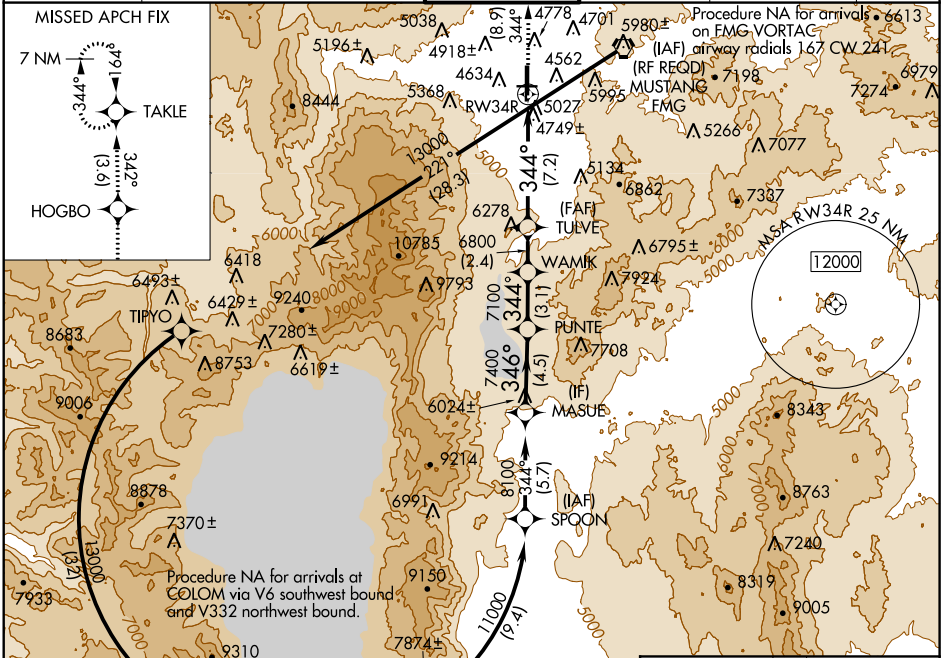
RENO/TAHOE INTL (RNO)

APP CRS	Rwy Idg	9000
344°	TDZE	4408
	Apt Elev	4415

NA GPS required. For uncompensated Baro-VNAV systems, procedure NA below -13°C (8°F) or above 40°C (105°F).
 -15°C

MISSED APPROACH: Climb to 10000 via 344° track to HOGBO and 342° track to TAKLE and hold, continue climb-in-hold to 10000.

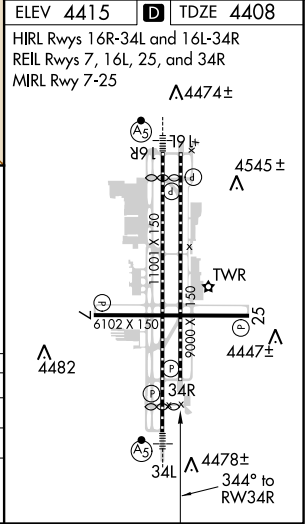
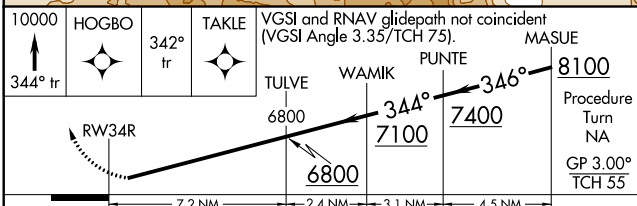
D-ATIS	NORCAL APP CON	RENO TOWER	GND CON	CLNC DEL	CPDLC
135.8 363.0	119.2 279.55 126.3 353.9	118.7 257.8	121.9 348.6	124.9 370.85	



SW-4, 25 FEB 2021 to 25 MAR 2021

SW-4, 25 FEB 2021 to 25 MAR 2021

ELEV 4415	D TDZE 4408
HIRL Rwys 16R-34L and 16L-34R	
REIL Rwys 7, 16L, 25, and 34R	
MIRL Rwy 7-25	



CATEGORY	A	B	C	D
RNP 0.15 DA	5173-2¾ 765 (800-2¾)			
RNP 0.30 DA	5344-4 936 (1000-4)			

AUTHORIZATION REQUIRED