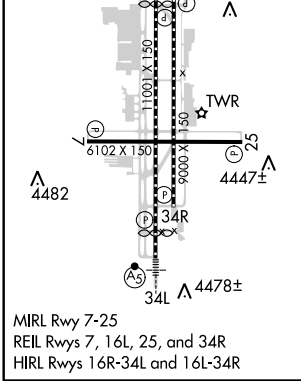
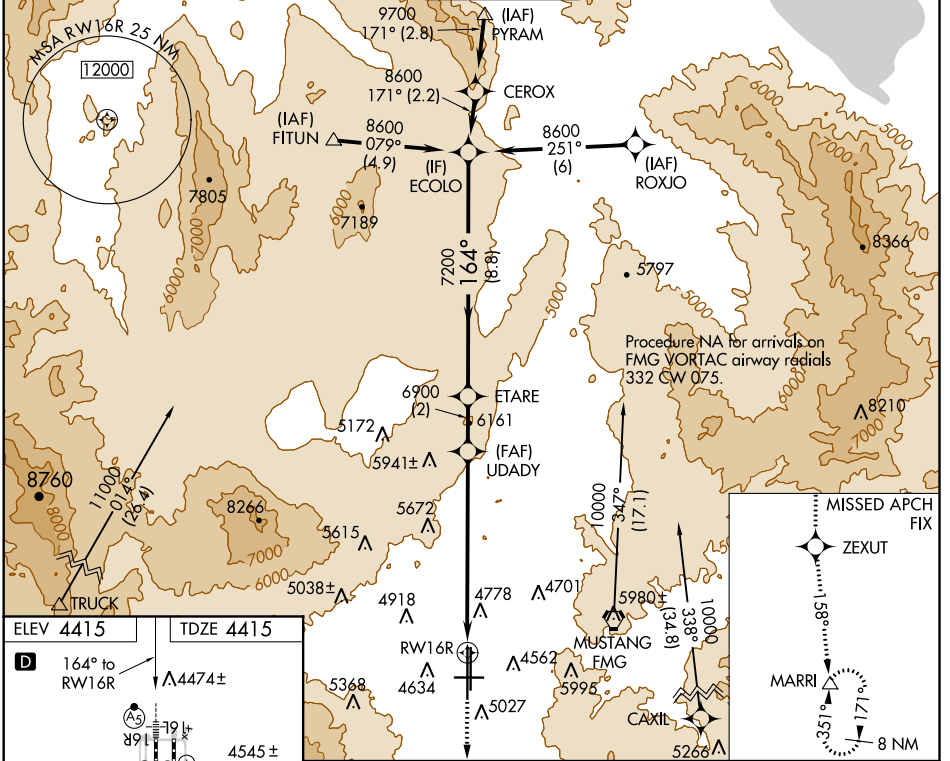


WAAS CH 78309 W16B	APP CRS 164°	Rwy Idg 10001 TDZE 4415 Apt Elev 4415
--	------------------------	--

RNAV (GPS) X RWY 16R

RENO/TAHOE INTL (RNO)

RNP APCH.		RENO TOWER 118.7 257.8		GND CON 121.9 348.6	CLNC DEL 124.9 370.85	CPDLC
Inoperative table does not apply to LNAV all Cats. For inoperative MALSRL increase LPV all Cats visibility to 2 3/4. -15°C		MALSRL 		MISSED APPROACH: Climb to 13000 direct ZEXUT and on track 158° to MARRI and hold.		



VGSIs and descent angles not coincident (VGSi Angle 3.06/TCH 77).			
ECOLO	ETARE	UDADY	RWY 16R
8600	6900	6900	
164°		158°	
7200		13000	
8.8 NM		2 NM	
7.2 NM			
GP 3.10°			
TCH 63			
CATEGORY	A	B	C
LPV DA	5239-2 1/4 824 (900-2 1/4)		
LNAV MDA	6200/60 1785 (1800-1 1/4)	6200-1 1/2 1785 (1800-1 1/2)	6200-3 1785 (1800-3)

SW-4, 25 FEB 2021 to 25 MAR 2021

SW-4, 25 FEB 2021 to 25 MAR 2021