

# RNAV (GPS) X RWY 34L

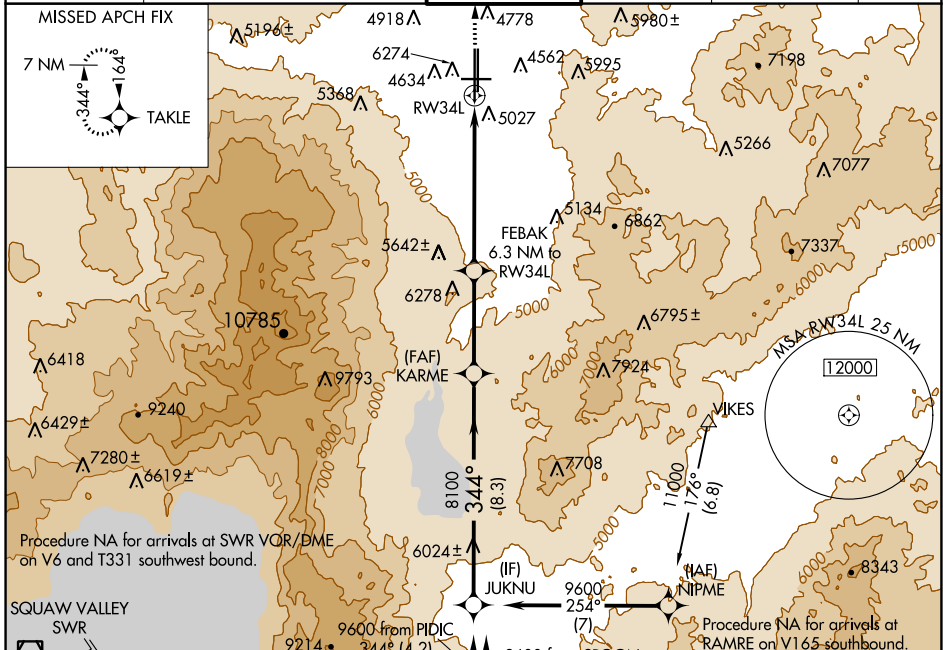
RENO/TAHOE INTL (RNO)

APP CRS <b>344°</b>	Rwy Idg <b>10011</b>
	TDZE <b>4410</b>
	Apt Elev <b>4415</b>

**⚠** Circling to Rwy 7 NA at night. DME/DME RNP-0.3 NA.  
 For inoperative MALSRL increase LNAV Cat A and B visibility to 1¼.  
**❄** -15°C

**MALSRL**  
 MISSED APPROACH: Climb to 10000 direct TAKLE and hold, continue climb-in-hold to 10000.

D-ATIS <b>135.8 363.0</b>	NORCAL APP CON <b>119.2 279.55 126.3 353.9</b>	RENO TOWER <b>118.7 257.8</b>	GND CON <b>121.9 348.6</b>	CLNC DEL <b>124.9 370.85</b>	CPDLC
------------------------------	---	----------------------------------	-------------------------------	---------------------------------	-------



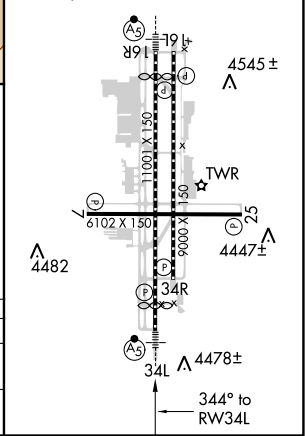
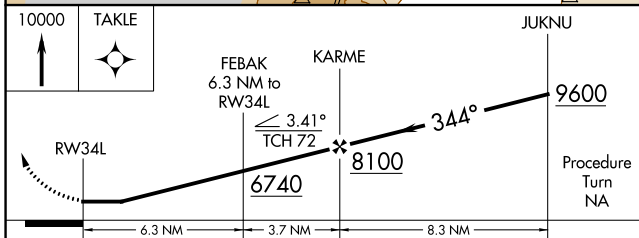
Procedure NA for arrivals at SWR VOR/DME on V6 and T331 southwest bound.

SQUAW VALLEY SWR  
 11800 087° (18.8)

Procedure NA for arrivals at RICHY on V28-113 southwest bound.

Procedure NA for arrivals at RAMRE on V165 southbound.

ELEV 4415	<b>D</b> TDZE 4410
HIRL Rwy 16R-34L and 16L-34R	
REIL Rwy 7, 16L, 25, and 34R	
MIRL Rwy 7-25 $\Delta$ 4474±	



CATEGORY	A	B	C	D
LNAV MDA	5300-1 890 (900-1)	5300-2¼ 890 (900-2¼)	5300-2½ 890 (900-2½)	5300-3 925 (1000-3)
CIRCLING	5340-1¼ 925 (1000-1¼)	5340-2¾ 925 (1000-2¾)	5340-3 925 (1000-3)	

SW-4, 25 FEB 2021 to 25 MAR 2021

SW-4, 25 FEB 2021 to 25 MAR 2021