

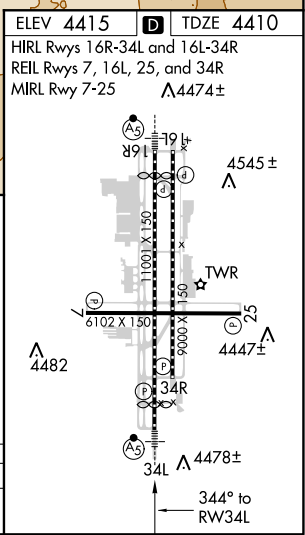
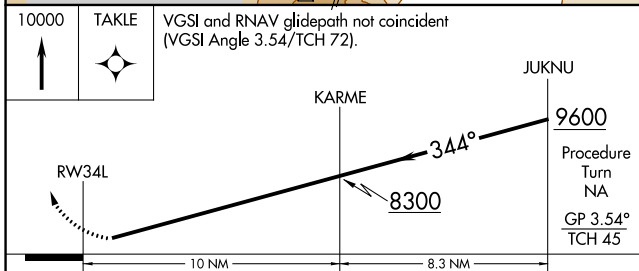
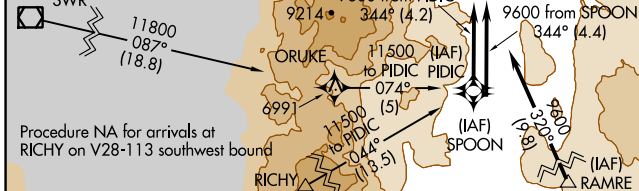
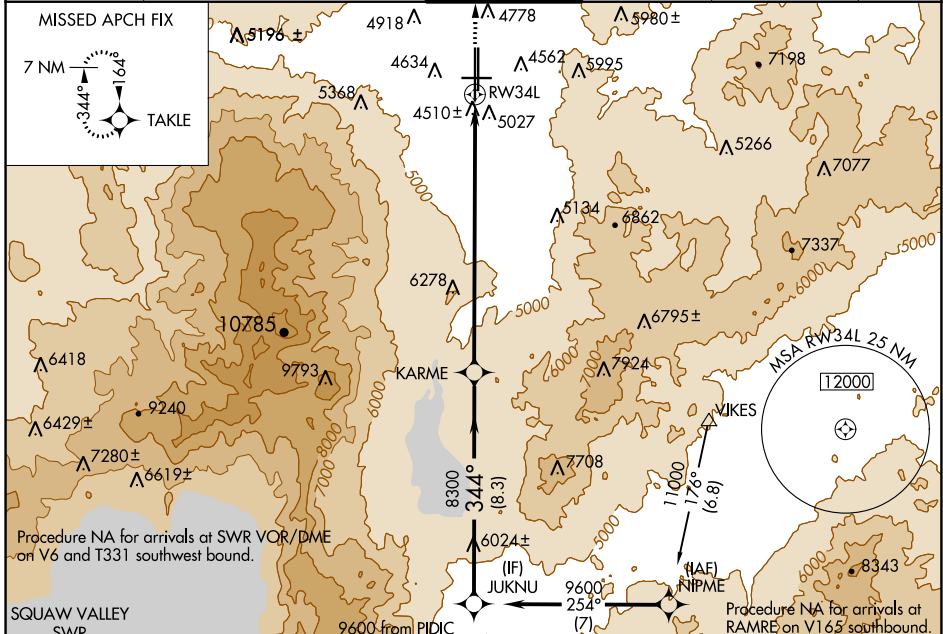
WAAS CH <b>82609</b> <b>W34A</b>	APP CRS <b>344°</b>	Rwy ldg <b>10011</b> TDZE <b>4410</b> Apt Elev <b>4415</b>
--	------------------------	--

# RNAV (GPS) Y RWY 34L

RENO/TAHOE INTL (RNO)

DME/DME RNP-0.3 NA. For inoperative MALSR increase LPV all Cats visibility 1/2 mile.	MALSR	MISSED APPROACH: Climb to 10000 direct TAKLE and hold, continue climb-in-hold to 10000.
---	-------	---

D-ATIS <b>135.8 363.0</b>	NORCAL APP CON <b>119.2 279.55 126.3 353.9</b>	RENO TOWER <b>118.7 257.8</b>	GND CON <b>121.9 348.6</b>	CLNC DEL <b>124.9 370.85</b>	CPDLC
------------------------------	---	----------------------------------	-------------------------------	---------------------------------	-------



CATEGORY	A	B	C	D
LPV DA	5018-1¼ 608 (700-1¼)			NA

SW-4, 25 FEB 2021 to 25 MAR 2021

SW-4, 25 FEB 2021 to 25 MAR 2021