

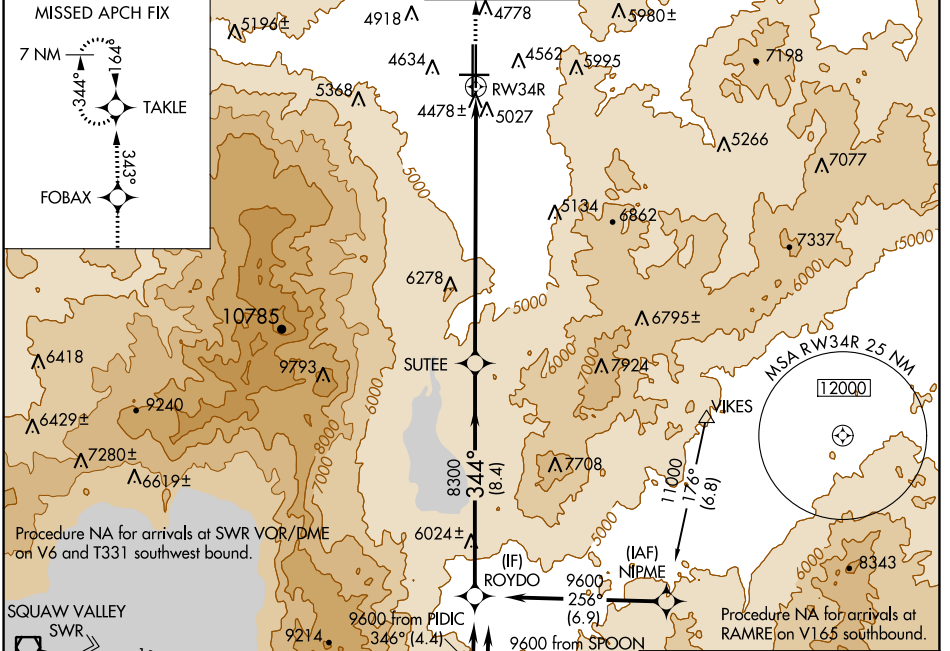
WAAS CH 40409 W34B	APP CRS 344°	Rwy Idg 9000 TDZE 4408 Apt Elev 4415
--	------------------------	---

RNAV (GPS) Y RWY 34R

RENO/TAHOE INTL (RNO)

-15°C DME/DME RNP- 0.3 NA.		MISSED APPROACH: Climb to 10000 direct FOBAX and via 343° track to TAKLE and hold, continue climb-in-hold to 10000.			
---------------------------------	--	---	--	--	--

D-ATIS 135.8 363.0	NORCAL APP CON 119.2 279.55 126.3 353.9	RENO TOWER 118.7 257.8	GND CON 121.9 348.6	CLNC DEL 124.9 370.85	CPDLC
------------------------------	---	----------------------------------	-------------------------------	---------------------------------	-------



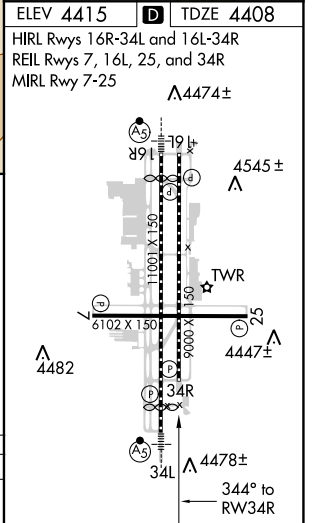
ELEV 4415	TDZE 4408
HIRL Rwy 16R-34L and 16L-34R REIL Rwy 7, 16L, 25, and 34R MIRL Rwy 7-25	

Procedure NA for arrivals at SWR VOR/DME on V6 and T331 southwest bound.

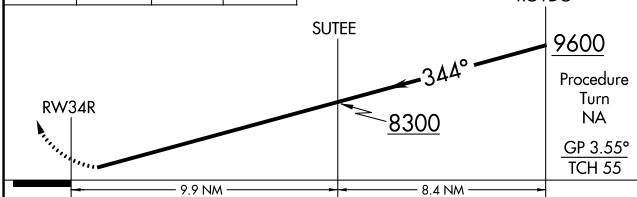
SQUAW VALLEY SWR

Procedure NA for arrivals at RAMRE on V165 southwest bound.

Procedure NA for arrivals at RICHY on V28-113 southwest bound.



10000	FOBAX	343°	TAKLE	VGSI and RNAV glidepath not coincident (VGSI Angle 3.35/TCH 75).
		tr		



CATEGORY	A	B	C	D
LPV DA	5043-2	635 (700-2)		NA

SW-4, 25 FEB 2021 to 25 MAR 2021

SW-4, 25 FEB 2021 to 25 MAR 2021