

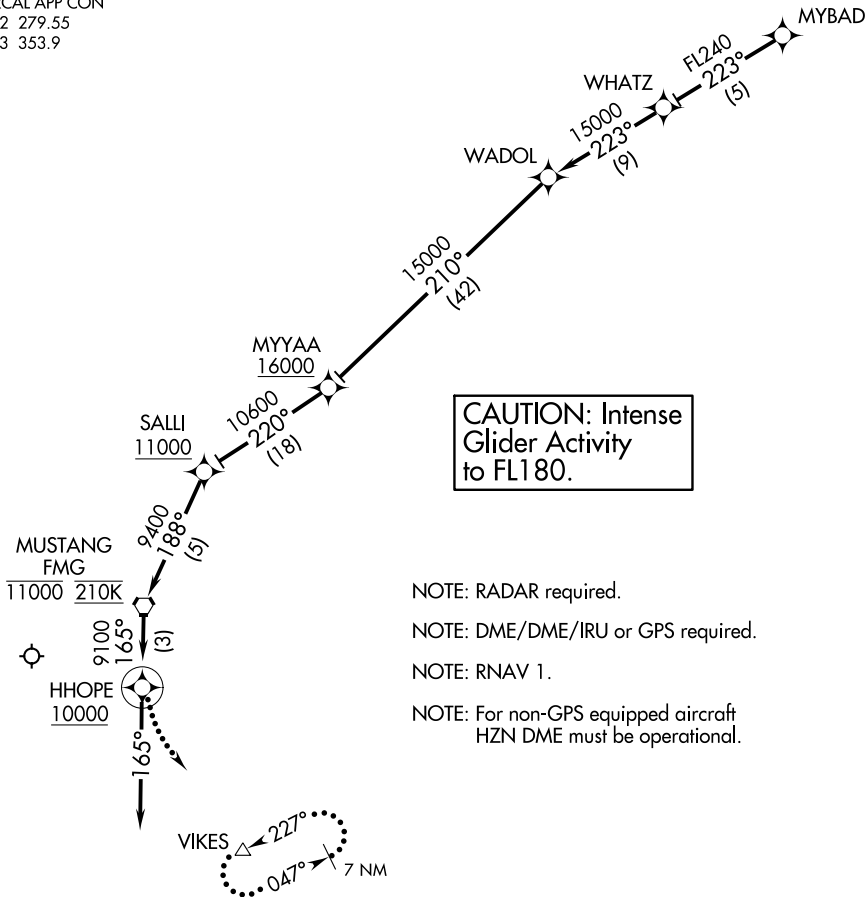
(MYBAD.WADOL2) 17173

WADOL TWO ARRIVAL (RNAV)

AL-346 (FAA)

RENO/TAHOE INTL (RNO)
RENO, NEVADA

D-ATIS
135.8 363.0
RENO TOWER
118.7 257.8
NORCAL APP CON
119.2 279.55
126.3 353.9



**CAUTION: Intense
Glider Activity
to FL180.**

- NOTE: RADAR required.
- NOTE: DME/DME/IRU or GPS required.
- NOTE: RNAV 1.
- NOTE: For non-GPS equipped aircraft HZN DME must be operational.

NOTE: Chart not to scale.

ARRIVAL ROUTE DESCRIPTION

From MYBAD on track 223° to WHATZ, then as depicted to cross HHOPE at or above 10000, then on heading 165°. Rwy 34L/34R expect RADAR vectors to final approach course.

LOST COMMUNICATIONS

At HHOPE, climbing left turn to 12000 direct to VIKES and hold.

WADOL TWO ARRIVAL (RNAV)

(MYBAD.WADOL2) 20OCT11

RENO, NEVADA
RENO/TAHOE INTL (RNO)

SW-4, 25 FEB 2021 to 25 MAR 2021

SW-4, 25 FEB 2021 to 25 MAR 2021