

| | | | |
|--|------------------------|---|-------------|
| WAAS CH 58322 W18A | APP CRS 178° | Rwy ldg TDZE 140 Apt Elev 140 | 5005 |
|--|------------------------|---|-------------|

RNAV (GPS) RWY 18

CLEVELAND MUNI (RNV)

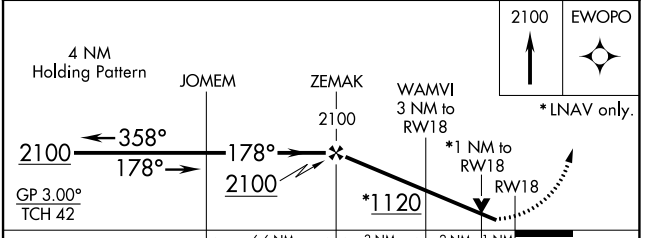
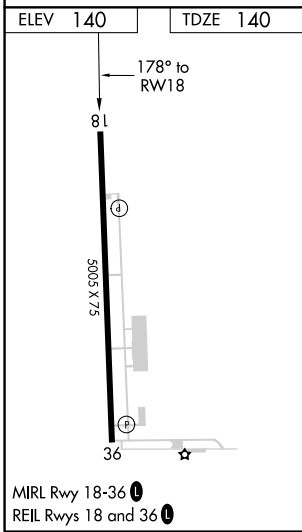
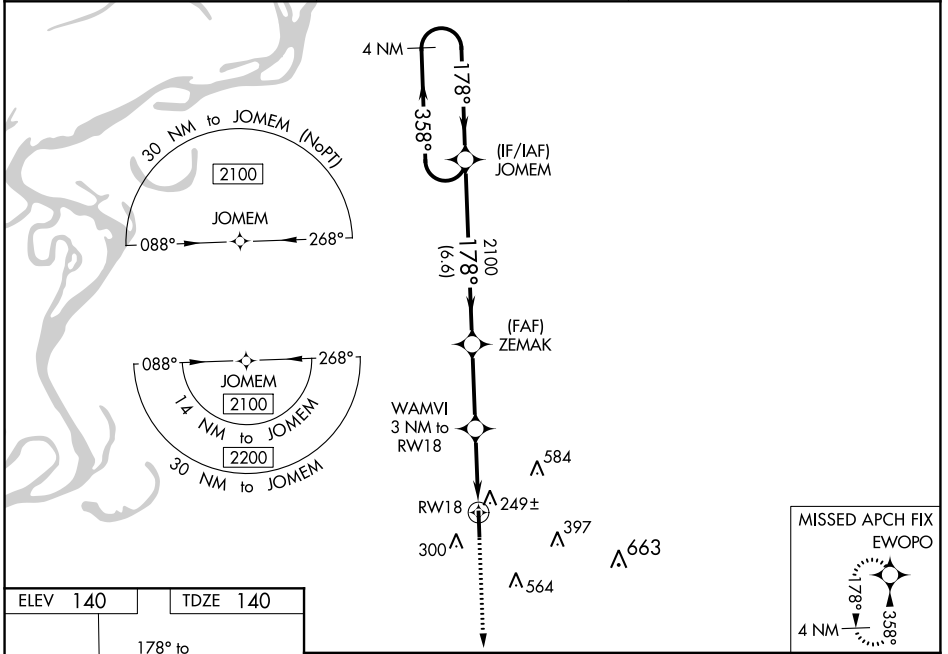
⚠ For uncompensated Baro-VNAV systems, LNAV/VNAV NA below -1.5°C (5°F) or above 54°C (130°F). DME/DME RNP-0.3 NA. When local altimeter setting not received, use Greenville altimeter setting and increase LPV DA to 438, LNAV/VNAV DA to 597, and all MDA 60 feet; increase LPV all Cats and LNAV Cats C/D visibility 1/8 mile, increase LNAV/VNAV all Cats visibility 1/4 mile. Baro-VNAV and VDP NA when using Greenville altimeter setting. Rwy 18 helicopter visibility reduction below 3/4 SM NA.

MISSED APPROACH:
Climb to 2100 direct EWOP and hold.

AWOS-3PT
124.175

MEMPHIS CENTER
135.875 269.35

UNICOM
122.725 (CTAF) ①



| CATEGORY | A | B | C | D |
|-------------------|-------|-------------|------------------------------|------------------------------|
| LPV DA | | 390-7/8 | 250 (300-7/8) | |
| LNAV/VNAV DA | | 549-13/8 | 409 (500-13/8) | |
| LNAV MDA | | 500-1 | 360 (400-1) | |
| C CIRCLING | 600-1 | 460 (500-1) | 900-2 1/4 760 (800-2 1/4) | 900-2 1/2 760 (800-2 1/2) |

SC-4, 25 FEB 2021 to 25 MAR 2021

SC-4, 25 FEB 2021 to 25 MAR 2021