

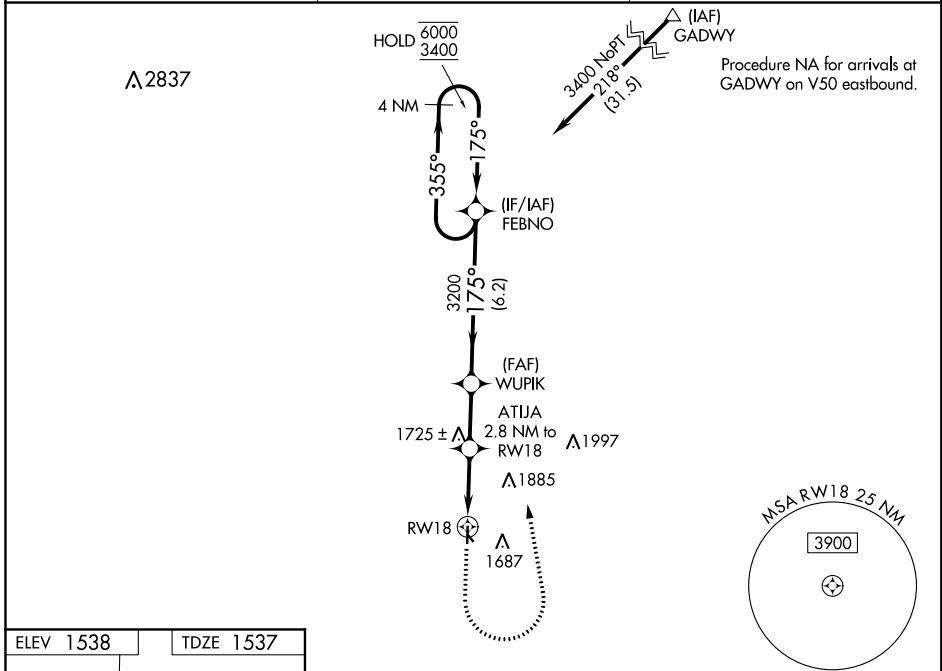
WAAS CH <b>87025</b> <b>W18A</b>	APP CRS <b>175°</b>	Rwy Idg TDZE Apt Elev	<b>3500</b> <b>1537</b> <b>1538</b>
--	------------------------	-----------------------------	---

# RNAV (GPS) RWY 18

BELLEVILLE MUNI (R.P.B)

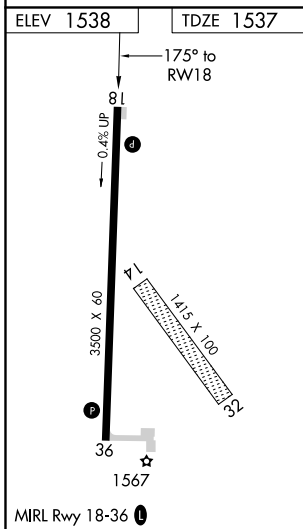
RNP APCH.	MISSED APPROACH: Climb to 2300 then climbing left turn to 3400 direct FEBNO and hold.
<p>▼ Circling NA to Rwys 14 and 32. Rwy 18 helicopter visibility reduction below 3/4 SM NA. Baro-VNAV NA. Use Concordia altimeter setting.</p> <p>▲ NA</p>	

CNK ASOS <b>123.825</b>	MINNEAPOLIS CENTER <b>126.4 317.7</b>	UNICOM <b>122.8 (CTAF)</b>
----------------------------	--	-------------------------------



NC-2, 25 FEB 2021 to 25 MAR 2021

NC-2, 25 FEB 2021 to 25 MAR 2021



ELEV 1538	TDZE 1537				
2300	3400	FEBNO			
↑	↶	✦			
*LNAV only	ATIJA 2.8 NM to RWY 18	WUPIK 3200	FEBNO	4 NM Holding Pattern	
↶ RWY 18	2440*	↘ 175°	↗ 355°	↖ 175°	↗ 6000 ↖ 3400
	2.8 NM	2.3 NM	6.2 NM	GP 3.00° TCH 41	
CATEGORY	A	B	C	D	
LPV DA	1832-1 295 (300-1)			NA	
LNAV/VNAV DA	1890-1¼ 353 (400-1¼)			NA	
LNAV MDA	2020-1	483 (500-1)	2020-1¾ 483 (500-1¾)	NA	
CIRCLING	2040-1	502 (600-1)	2040-1½ 502 (600-1½)	NA	