

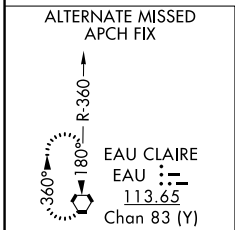
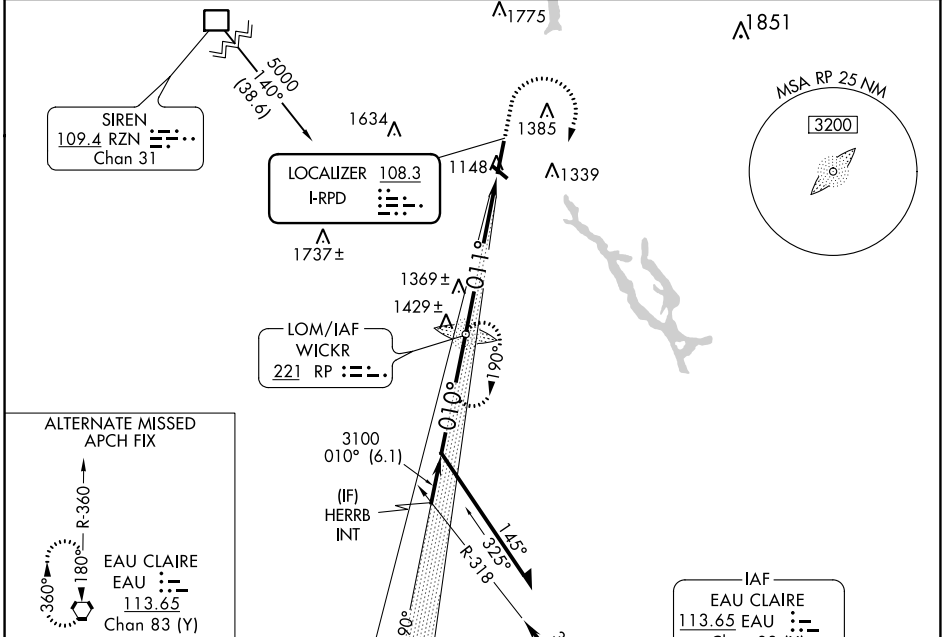
LOC I-RPD <b>108.3</b>	APP CRS <b>011°</b>	Rwy Idg <b>6500</b>
		TDZE <b>1102</b>
		Apt Elev <b>1109</b>

# ILS or LOC RWY 1

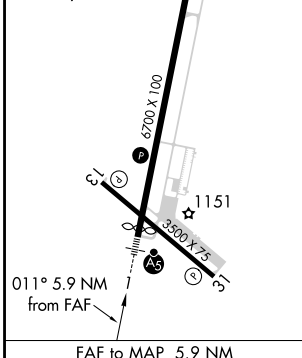
RICE LAKE RGNL-CARL'S FIELD (RPD)

ADF required. From RZN DME: RNAV 1-GPS required.		MALSR 	MISSED APPROACH: Climb to 2200 then climbing right turn to 3200 direct WICKR LOM and hold.
-35°C			
Circling Rwy 13, 31 NA at night.			

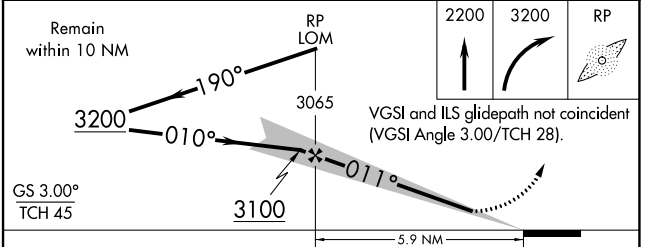
AWOS-3 <b>120.525</b>	MINNEAPOLIS CENTER <b>125.3 335.6</b>	UNICOM <b>122.7 (CTAF)</b>
--------------------------	--	-------------------------------



ELEV 1109	TDZE 1102
REIL Rws 13, 31	
REIL Rwy 19	
HIRL Rwy 1-19	
MIRL Rwy 13-31	



FAF to MAP 5.9 NM					
Knots	60	90	120	150	180
Min:Sec	5:54	3:56	2:57	2:22	1:58



CATEGORY	A	B	C	D
S-ILS 1	1302-1/2 200 (200-1/2)			
S-LOC 1	1620-1/2	518 (600-1/2)	1620-1 518 (600-1)	1620-1/4 518 (600-1/4)
CIRCLING	1620-1 511 (600-1)	1740-1 631 (700-1)	1740-1 3/4 631 (700-1 3/4)	1940-2 3/4 831 (900-2 3/4)

EC-3, 25 FEB 2021 to 25 MAR 2021

EC-3, 25 FEB 2021 to 25 MAR 2021