

AL-5535 (FAA)

# RNAV (GPS) RWY 21

GRAHAM MUNI (RPH)

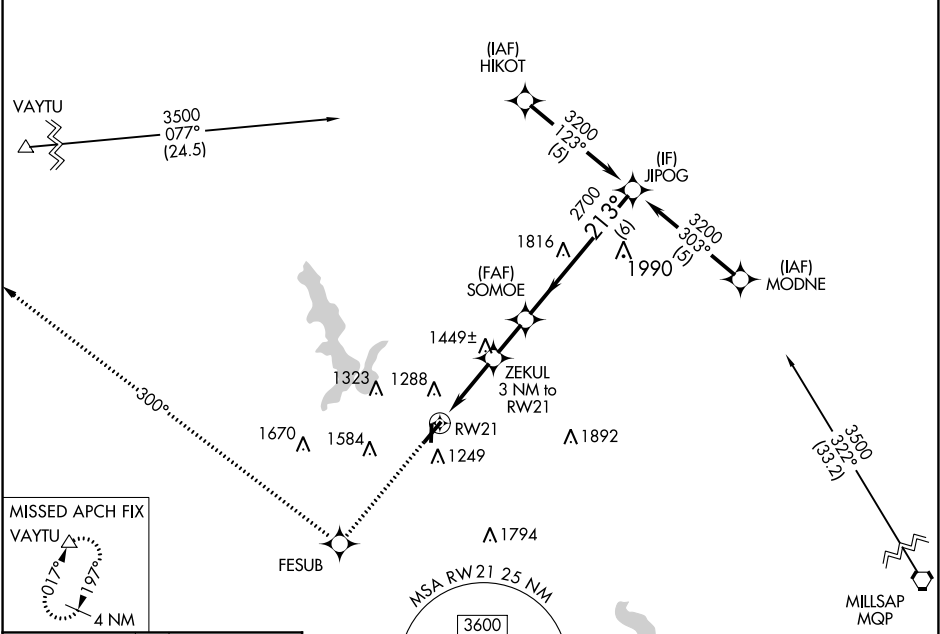
APP CRS	Rwy Idg	<b>5000</b>
<b>213°</b>	TDZE	<b>1114</b>
	Apt Elev	<b>1123</b>

RNP APCH.

When local altimeter setting not received, use Mineral Wells altimeter setting and increase all  
 MDAs 100 feet. Rwy 21 helicopter visibility reduction below 1 SM NA. Procedure NA at night.

**MISSED APPROACH:**  
 Climb to 3900 direct FESUB and via 300° track to VAYTU and hold.

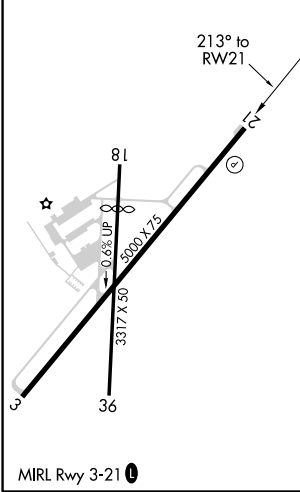
AWOS-3 <b>118.025</b>	FORT WORTH CENTER <b>127.0 360.6</b>	UNICOM <b>122.975 (CTAF)</b>
--------------------------	---	---------------------------------



SC-2, 25 FEB 2021 to 25 MAR 2021

SC-2, 25 FEB 2021 to 25 MAR 2021

ELEV 1123	TDZE 1114
-----------	-----------



3900	FESUB	300° tr	VAYTU
Procedure NA for arrivals on MQP VORTAC via airway radials 265 CW 001.			
RWY 21 → 2100 (3.04° TCH 40)		JIPOG → 3200 (213°)	
3 NM		6 NM	
CATEGORY	A	B	C
LNAV MDA	1700-1	586 (600-1)	NA
CIRCLING	1700-1	577 (600-1)	NA