

WAAS CH <b>78228</b> <b>W07A</b>	APP CRS <b>071°</b>	Rwy Idg TDZE Apt Elev	<b>5001</b> <b>775</b> <b>781</b>
--	------------------------	-----------------------------	---

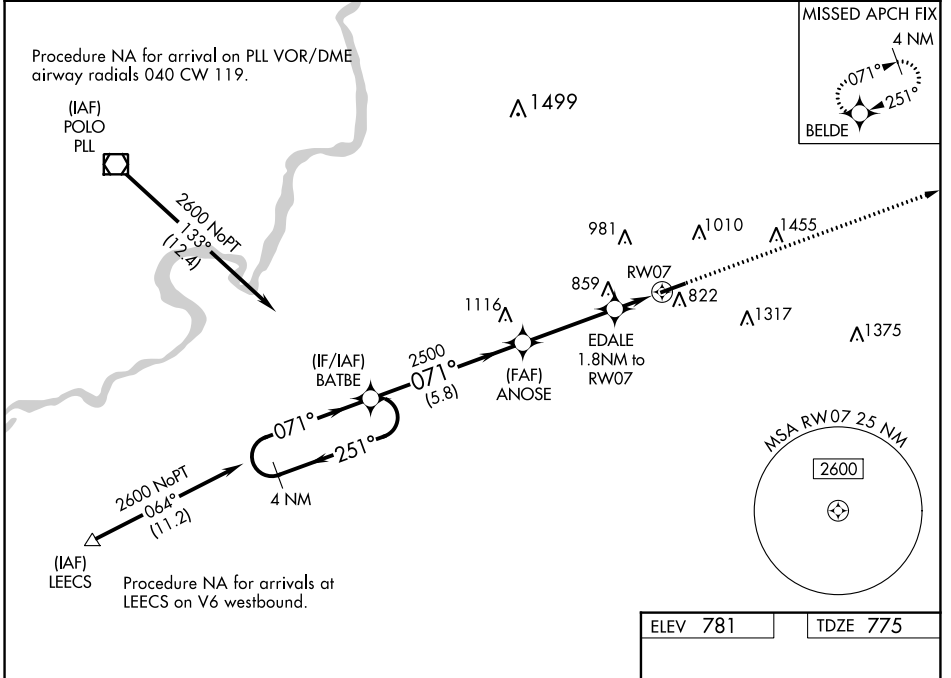
# RNAV (GPS) RWY 7

ROCHELLE MUNI AIRPORT-KORITZ FIELD (R.P.J)

**⚠** Baro-VNAV NA when using Chicago/Rockford Intl altimeter setting. For uncompensated Baro-VNAV systems, LNAV/VNAV NA below -16°C (4°F) or above 54°C (130°F). DME/DME RNP-0.3 NA. When local altimeter setting not received, use Chicago/Rockford Intl altimeter setting: increase all DA to 1073 feet and all MDA 60 feet; increase LNAV visibility Cats C/D ¼ mile; increase Circling Cat C visibility ¼ mile. VDP NA when using Chicago/Rockford Intl altimeter setting.

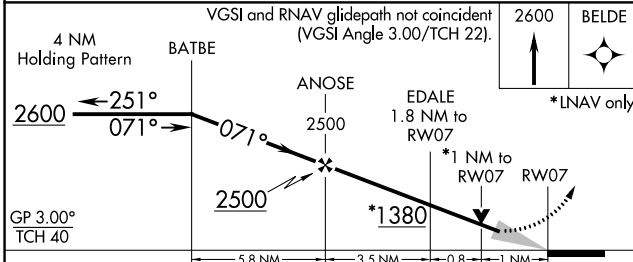
**MISSED APPROACH:**  
Climb to 2600 direct BELDE and hold.

AWOS-3 <b>125.2</b>	ROCKFORD APP CON <b>126.0 327.0</b>	UNICOM <b>122.975 (CTAF)</b>
------------------------	--	---------------------------------



EC-3, 25 FEB 2021 to 25 MAR 2021

EC-3, 25 FEB 2021 to 25 MAR 2021



ELEV 781	TDZE 775
<p>MIRL Rwy 7-25</p> <p>REIL Rws 7 and 25</p>	

CATEGORY	A	B	C	D
LPV DA		1025-1	250 (300-1)	
LNAV/VNAV DA		1025-1	250 (300-1)	
LNAV MDA		1120-1	345 (400-1)	
<b>CIRCLING</b>	1260-1 479 (500-1)	1360-1 579 (600-1)	1680-2¾ 899 (900-2¾)	1820-3 1039 (1100-3)