

WAAS CH <b>56238</b> <b>W27A</b>	APP CRS <b>275°</b>	Rwy Idg <b>4300</b> TDZE <b>976</b> Apt Elev <b>990</b>
--	------------------------	---

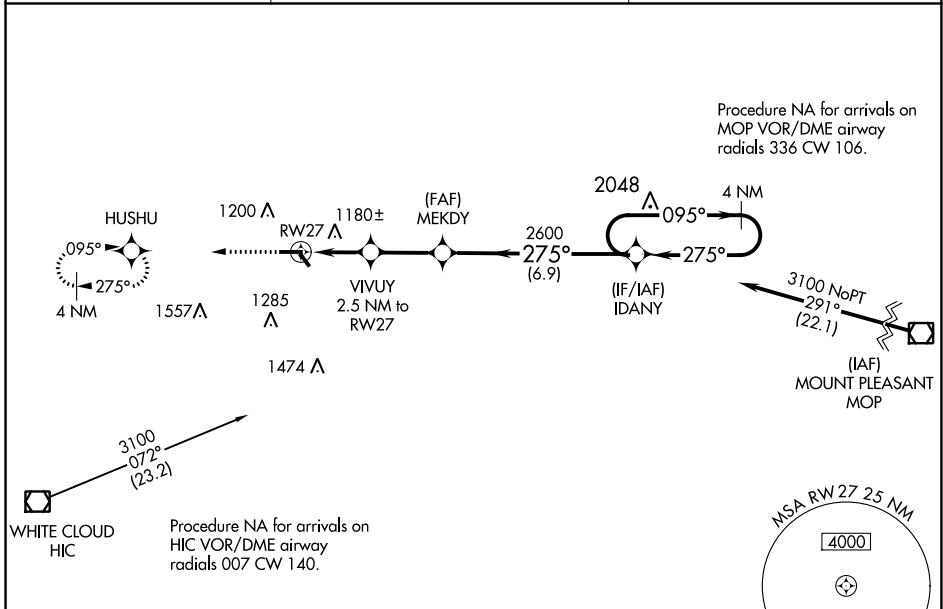
# RNAV (GPS) RWY 27

ROBEN-HOOD (RQB)

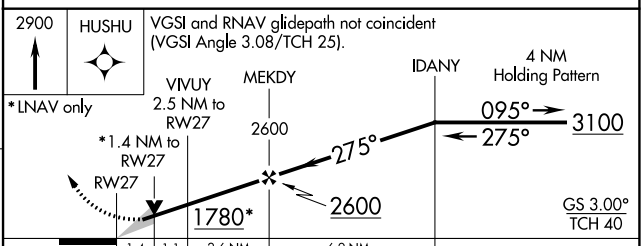
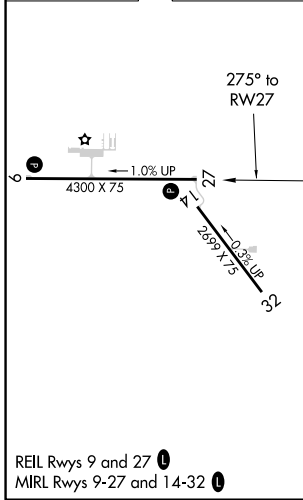
**▼** For uncompensated Baro-VNAV systems, procedure NA below -16°C (4°F) or above 54°C (130°F).  
**▲** DME/DME RNP-0.3 NA. Night landing: Rwy 32 NA. Baro-VNAV and VDP NA when using Muskegon altimeter setting. When local altimeter setting is not received, use Muskegon altimeter setting and increase DA 1.57 feet and all visibilities ½ mile; increase all MDAs 160 feet, LNAV Cat C/D visibility and Circling Cat C ½ and Circling Cat D visibility ¼ mile.

**MISSED APPROACH:**  
 Climb to 2900 direct HUSHU and hold.

AWOS-3P <b>125.875</b>	MINNEAPOLIS CENTER <b>120.85 322.35</b>	UNICOM <b>122.8 (CTAF) ①</b>
---------------------------	--	---------------------------------



ELEV <b>990</b>	TDZE <b>976</b>
-----------------	-----------------



CATEGORY	A	B	C	D
LPV DA		1176-¾	200 (200-¾)	
LNAV/VNAV DA		1540-2	564 (600-2)	
LNAV MDA	1440-1	464 (500-1)	1440-1¾	464 (500-1¾)
<b>C</b> CIRCLING	1500-1 510 (600-1)	1560-1 570 (600-1)	1700-2 710 (800-2)	1860-2¾ 870 (900-2¾)

EC-1, 25 FEB 2021 to 25 MAR 2021

EC-1, 25 FEB 2021 to 25 MAR 2021