

WAAS CH 86722 W36A	APP CRS 357°	Rwy Idg TDZE 311 Apt Elev 311	5000
--	------------------------	---	-------------

RNAV (GPS) RWY 36

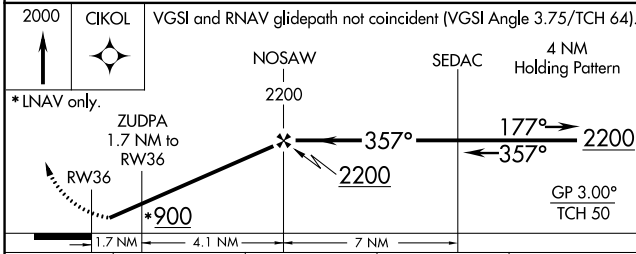
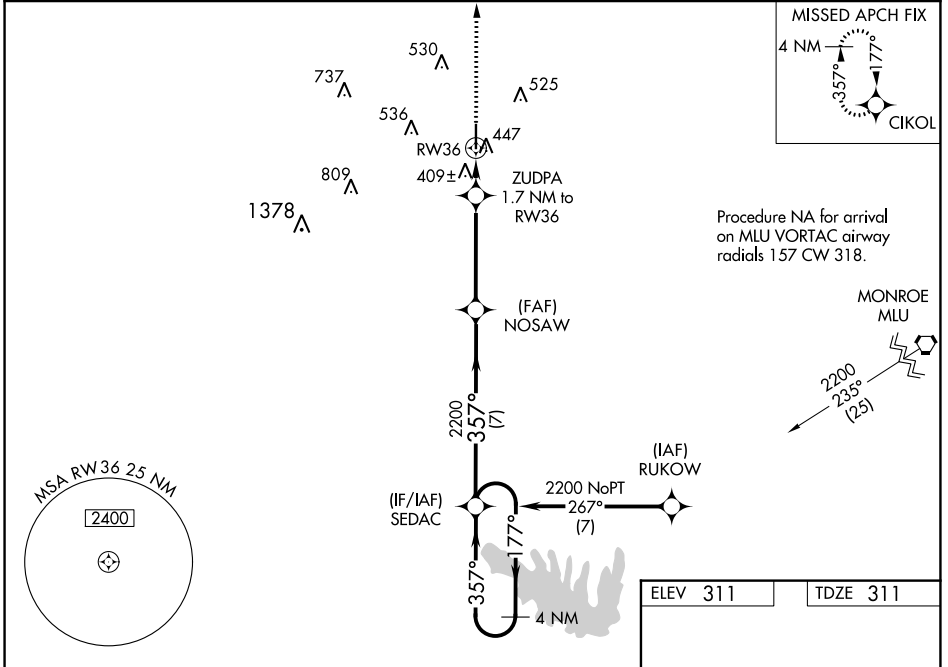
RUSTON RGNL (RSN)

RNP APCH.

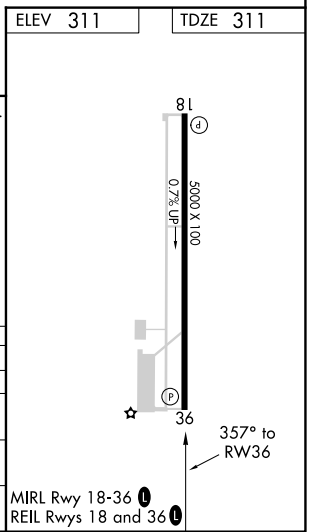
⚠ Baro-VNAV NA when using Monroe altimeter setting. For uncompensated Baro-VNAV systems, LNAV/VNAV NA below -1.5°C (5°F) or above 41°C (105°F). Rwy 36 helicopter visibility reduction below 3/4 SM NA. When local altimeter setting not received, use Monroe altimeter setting and increase all DA 97 feet and all MDA 100 feet; increase LPV all Cats and LNAV/VNAV all Cats visibility 3/8 mile and LNAV Cat C and D and Circling Cat C visibility 1/4 mile.

MISSED APPROACH:
Climb to 2000 direct CIKOL and hold.

AWOS-3PT 119.525	MONROE APP CON* 126.9 307.9	CLNC DEL 118.8	UNICOM 122.7 (CTAF)
----------------------------	---------------------------------------	--------------------------	-------------------------------



CATEGORY	A	B	C	D
LPV DA		625-1	314 (400-1)	
LNAV/VNAV DA		706-1 1/4	395 (400-1 1/4)	
LNAV MDA	700-1	389 (400-1)	700-1 1/8	389 (400-1 1/8)
CIRCLING	760-1 449 (500-1)	780-1 469 (500-1)	780-1 1/2 469 (500-1 1/2)	880-2 569 (600-2)



SC-4, 25 FEB 2021 to 25 MAR 2021

SC-4, 25 FEB 2021 to 25 MAR 2021