

WAAS CH <b>63033</b> <b>W17A</b>	APP CRS <b>169°</b>	Rwy Idg TDZE Apt Elev	<b>3398</b> <b>455</b> <b>461</b>
--	------------------------	-----------------------------	---

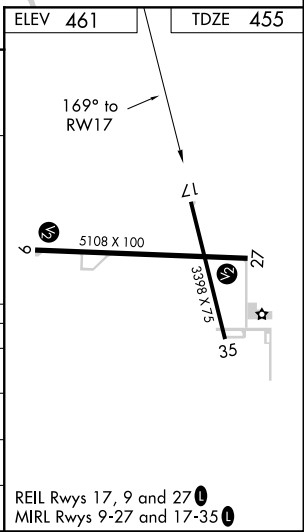
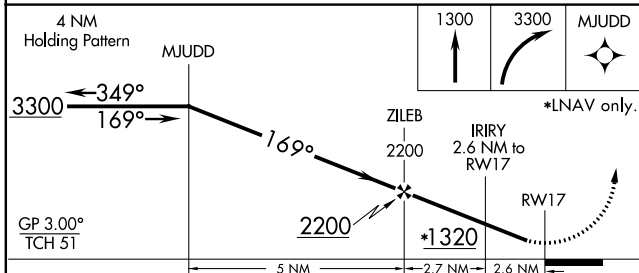
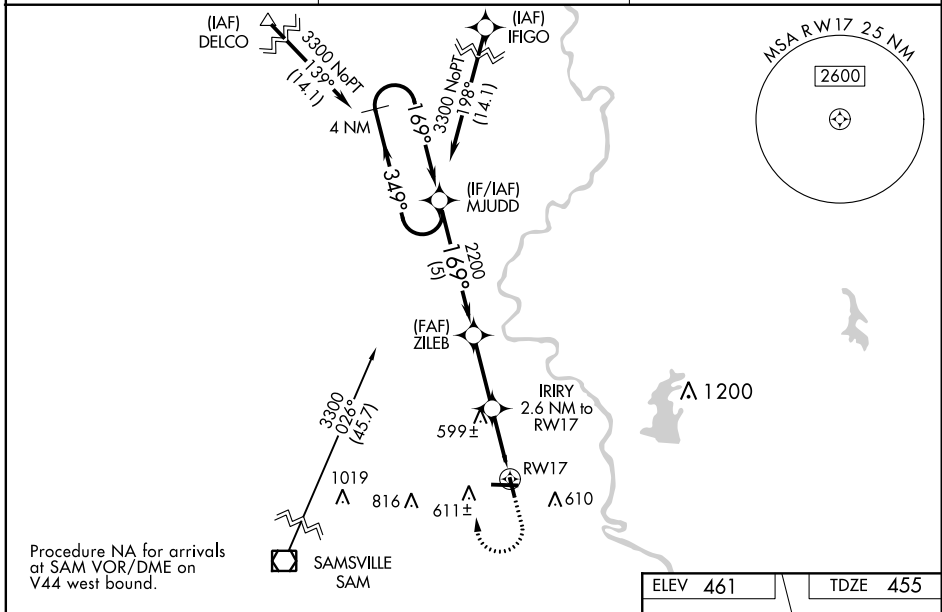
# RNAV (GPS) RWY 17

CRAWFORD CO (RSV)

**⚠** Baro-VNAV NA when using Terre Haute Rgnl altimeter setting. For uncompensated Baro-VNAV systems, LNAV/VNAV NA below -15°C (5°F) or above 54°C (130°F). DME/DME RNP-0.3 NA. When local altimeter setting not received, use Terre Haute Rgnl altimeter setting and increase all DA 89 feet and all MDA 100 feet; increase LPV all Cats visibility ¼ mile, increase LNAV/VNAV all Cats visibility ⅓ mile, increase LNAV Cat C visibility ¼ mile and increase Circling Cat C visibility ½ mile. Rwy 17 Straight-in and Circling minimums NA at night. Helicopter visibility reduction below 1 SM NA.

**MISSED APPROACH:** Climb to 1300 then climbing right turn to 3300 direct MJUDD and hold.

AWOS-3 <b>120.50</b>	HULMAN APP CON <b>119.25 339.8</b>	UNICOM <b>123.0 (CTAF) 0</b>
-------------------------	---------------------------------------	---------------------------------



CATEGORY	A	B	C	D
LPV DA	734-1 279 (300-1)			NA
LNAV/VNAV DA	812-1½ 357 (400-1½)			NA
LNAV MDA	860-1	405 (400-1)	860-1½ 405 (400-1½)	NA
<b>C</b> CIRCLING	940-1 479 (500-1)	1080-1 619 (700-1)	1120-1¾ 659 (700-1¾)	NA

EC-3, 25 FEB 2021 to 25 MAR 2021

EC-3, 25 FEB 2021 to 25 MAR 2021