

ESTRR FOUR DEPARTURE (RNAV)

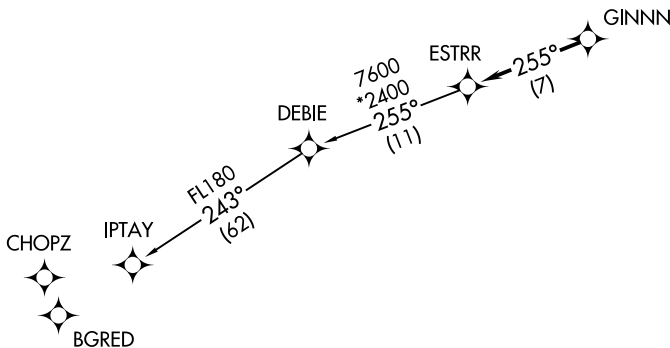
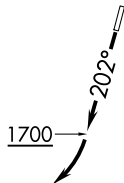
**TOP ALTITUDE:
3000**

AWOS-3
118.175
CLNC DEL
127.35
127.35
UNICOM (CTAF)
122.725
CHARLOTTE DEP CON
128.325 307.8

TAKEOFF MINIMUMS

Rwy 2: Standard.

Rwy 20: 400-2³/₄ or standard with minimum climb of 205' per NM to 1300, or alternatively, with standard takeoff minimums and a normal 200' per NM climb gradient, takeoff must occur no later than 1200' prior to DER.



- NOTE: For turbojets only.
- NOTE: DME/DME/IRU or GPS required.
- NOTE: RNAV 1.
- NOTE: RADAR required.
- NOTE: If unable to accept climb rates, advise ATC on initial contact.
- NOTE: Upon reaching 10000 MSL, accelerate to and maintain 280K, if unable advise ATC.

NOTE: Chart not to scale.



DEPARTURE ROUTE DESCRIPTION

TAKEOFF RWY 20: Climb heading 202° to 1700 before turning right.

Climb on heading assigned by ATC, expect RADAR vectors to GINNN, then on track 255° to ESTRR, then on IPTAY transition. Maintain 3000, expect clearance to filed altitude within 10 minutes after departure.

IPTAY TRANSITION (ESTRR4.IPTAY)

ESTRR FOUR DEPARTURE (RNAV)

SE-2, 25 FEB 2021 to 25 MAR 2021

SE-2, 25 FEB 2021 to 25 MAR 2021