

LOC RWY 6

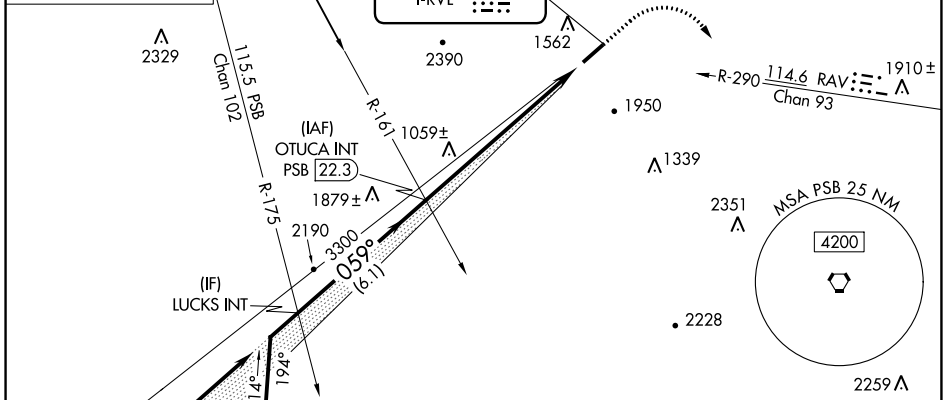
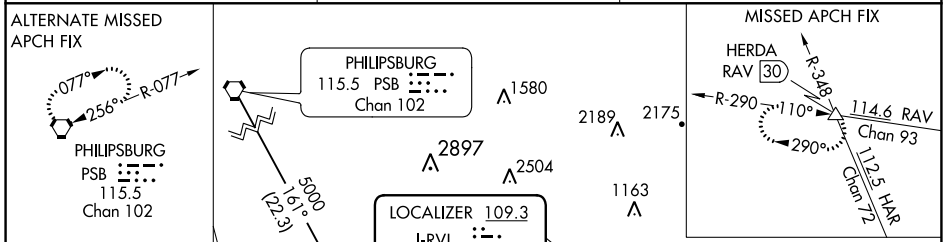
MIFFLIN COUNTY (R.V.L)

LOC I-RVL	APP CRS	Rwy Idg	5001
109.3	059°	TDZE	819
		Apt Elev	819

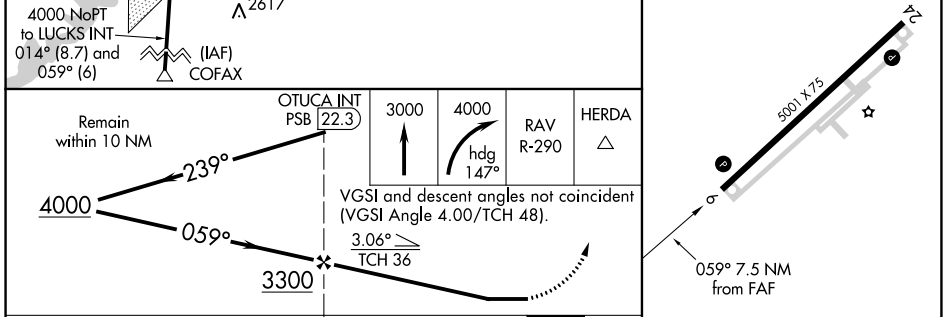
⚠ Circling NA northwest of Rwy 6-24. Rwy 6 helicopter visibility reduction below ¾ SM NA. VDP NA with State College altimeter setting. **⚠** NA When local altimeter setting not received, use State College altimeter setting and increase all MDAs 100 feet.

✈ MISSED APPROACH: Climb to 3000 then climbing right turn to 4000 on heading 147° and RAV VORTAC R-290 to HERDA INT/RAV 30 DME and hold.

AWOS-3PT	NEW YORK CENTER	UNICOM
123.85	134.8 338.3	122.7 (CTAF) 0



ELEV 819	TDZE 819
----------	----------



CATEGORY	A	B	C	D
S-6	1840-1¼ 1021 (1100-1¼)	1840-1½ 1021 (1100-1½)	1840-3 1021 (1100-3)	1021 (1100-3)
CIRCLING	1840-1¼ 1021 (1100-1¼)	1840-1½ 1021 (1100-1½)	1840-3 1021 (1100-3)	2360-3 1541 (1600-3)

REIL Rwys 6 and 24
 MIRL Rwy 6-24
 FAF to MAP 7.5 NM

Knots	60	90	120	150	180
Min:Sec	7:30	5:00	3:45	3:00	2:30

NE-4, 25 FEB 2021 to 25 MAR 2021

NE-4, 25 FEB 2021 to 25 MAR 2021