

APP CRS	Rwy Idg	<b>5001</b>
<b>059°</b>	TDZE	<b>819</b>
	Apt Elev	<b>819</b>

# RNAV (GPS) RWY 6

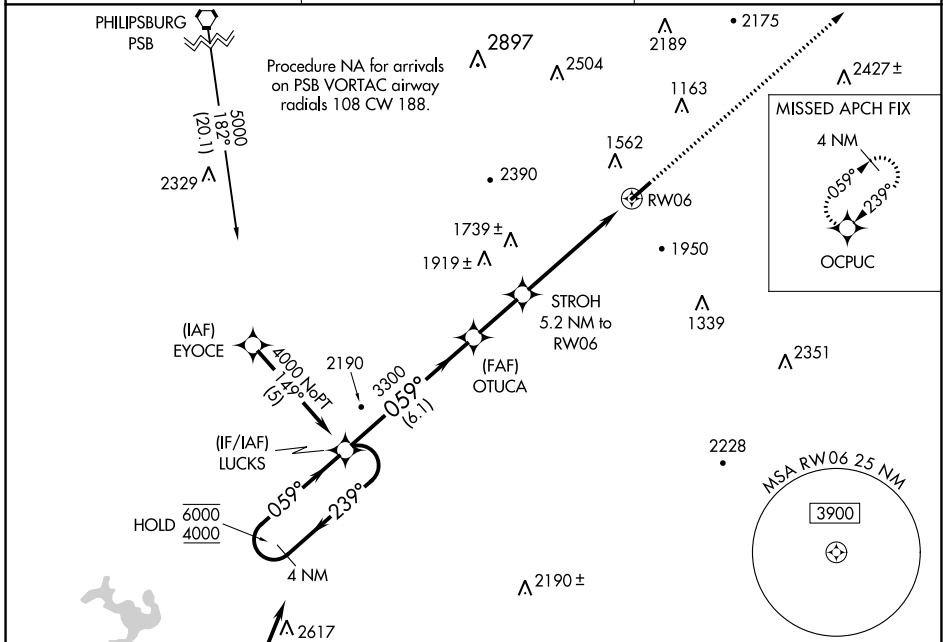
MIFFLIN COUNTY (RVL)

RNP APCH.

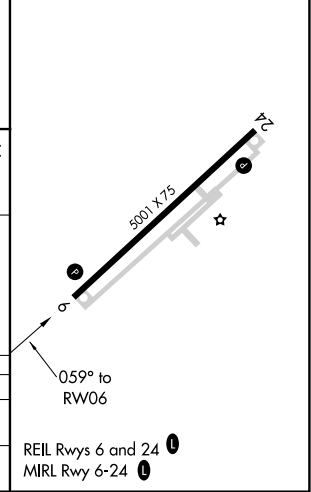
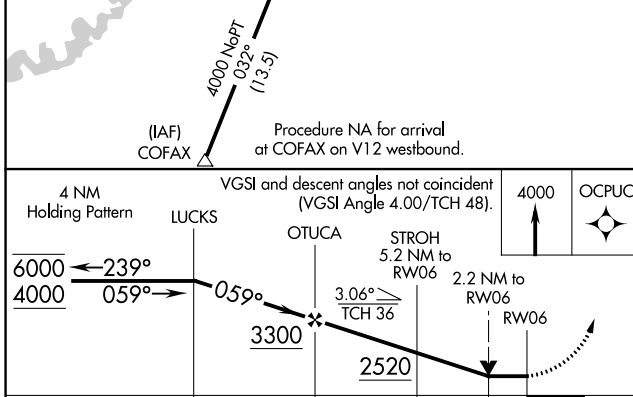
**⚠** Circling NA NW of Rwy 6-24. Rwy 6 helicopter visibility reduction below 3/4 SM NA. VDP NA when using State College altimeter setting. When local altimeter setting not received, use State College altimeter setting and increase all MDAs 100 feet.

**MISSED APPROACH:**  
Climb to 4000 direct OCPUC and hold.

AWOS-3PT <b>123.85</b>	NEW YORK CENTER <b>134.8 338.3</b>	UNICOM <b>122.7 (CTAF) 0</b>
---------------------------	---------------------------------------	---------------------------------



ELEV 819	TDZE 819
----------	----------



CATEGORY	A	B	C	D
LNVA MDA	2180-1¼ 1361 (1400-1¼)	2180-1½ 1361 (1400-1½)	2180-3 1361 (1400-3)	
CIRCLING	2180-1¼ 1361 (1400-1¼)	2180-1½ 1361 (1400-1½)	2180-3 1361 (1400-3)	2360-3 1541 (1600-3)

NE-4, 25 FEB 2021 to 25 MAR 2021

NE-4, 25 FEB 2021 to 25 MAR 2021