

WAAS CH 58040 W07A	APP CRS 071°	Rwy Idg TDZE 1255 Apt Elev 1255
--	------------------------	---

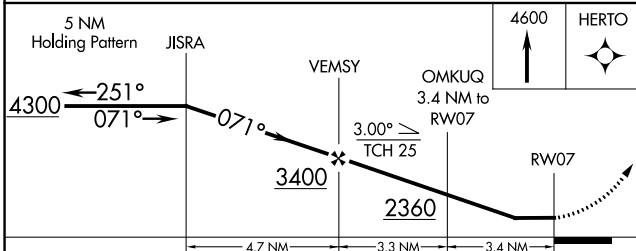
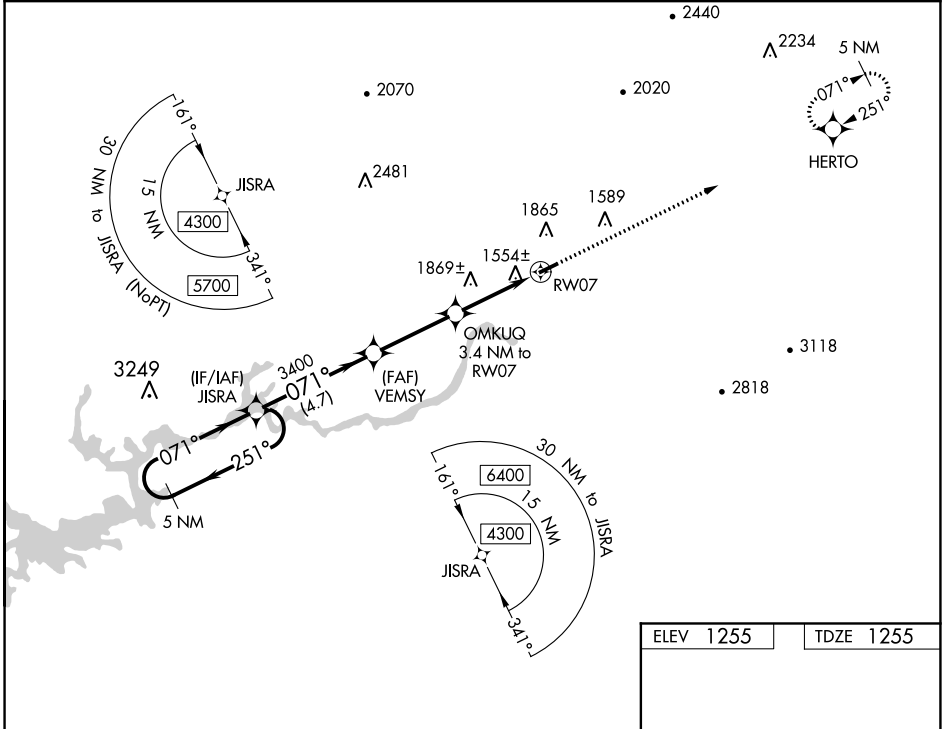
RNAV (GPS) RWY 7

HAWKINS COUNTY (RVN)

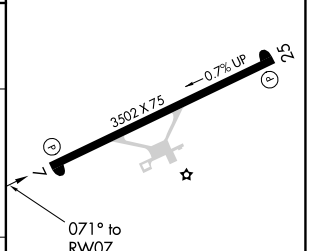
NA DME/DME RNP-0.3 NA. Procedure NA at night. Obtain local altimeter setting on CTAF; when not received, use Tri-Cities altimeter setting and increase all MDA 120 feet, increase LP Cat C visibility 3/8 SM, increase LNAV Cat A and Circling Cat B visibility 1/4 SM. Rwy 7, 25 helicopter visibility reduction below 1 SM NA.

MISSED APPROACH: Climb to 4600 direct HERTO and hold, continue climb-in-hold to 4600.

TRI CITY APP CON ★ 128.05 317.5	UNICOM 122.8 (CTAF)
---	-------------------------------



ELEV 1255	TDZE 1255
-----------	-----------



CATEGORY	A	B	C	D
LP MDA	1820-1	565 (600-1)	1820-1½ 565 (600-1½)	NA
LNAV MDA	2040-1 785 (800-1)	2040-1¼ 785 (800-1¼)	2040-2½ 785 (800-2½)	NA
CIRCLING	2180-1¼	925 (1000-1¼)	2320-3 1065 (1100-3)	NA

MIRL Rwy 7-25
REIL Rws 7 and 25

SE-1, 25 FEB 2021 to 25 MAR 2021

SE-1, 25 FEB 2021 to 25 MAR 2021