

APP CRS	Rwy Idg	<b>5000</b>
<b>138°</b>	TDZE	<b>988</b>
	Apt Elev	<b>989</b>

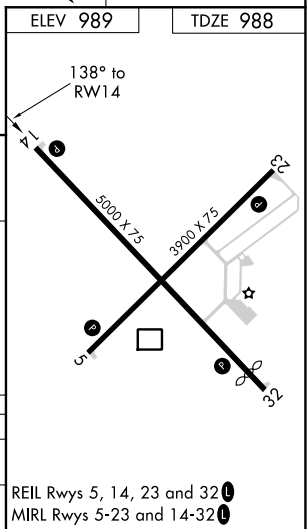
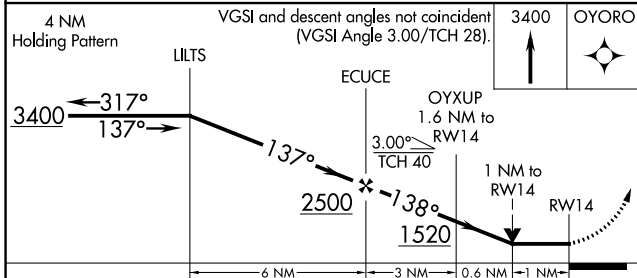
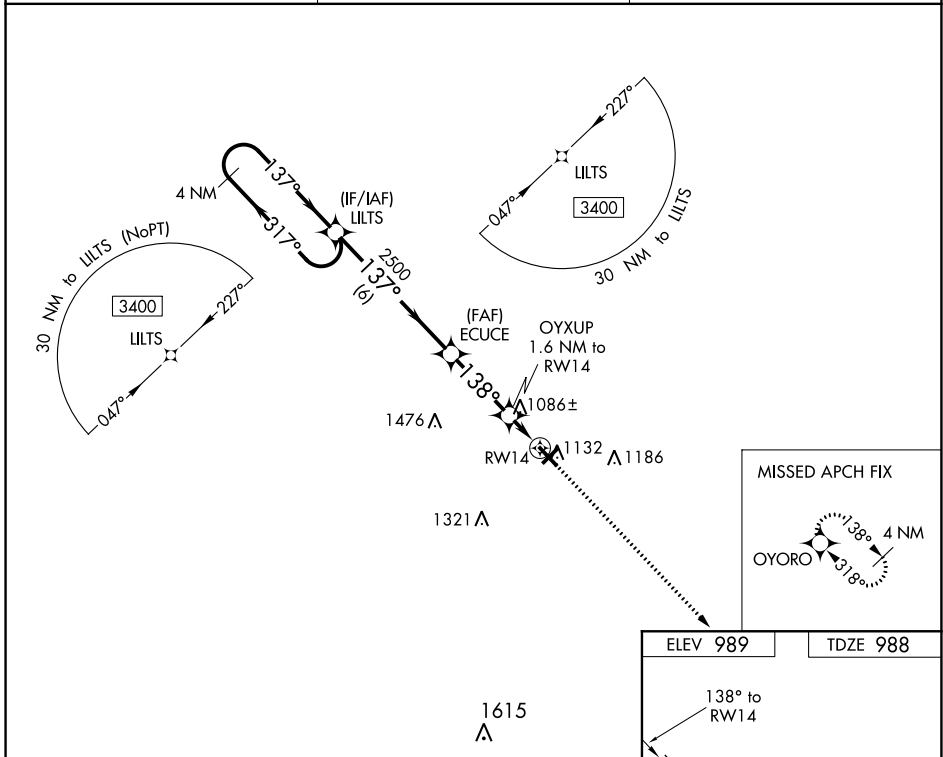
# RNAV (GPS) RWY 14

BURNETT COUNTY (RZN)

**⚠** DME/DME RNP-0.3 NA. VDP NA with Rush City, MN altimeter setting.  
**⚠** When local altimeter setting not received, use Rush City, MN altimeter setting and increase all MDA 80 feet; increase LNAV Cat C/D visibility and Circling Cat C/D visibility ¼ mile. Helicopter visibility reduction below ¾ SM NA. Night landing: Rwy 5, 23, 32 NA.

**MISSED APPROACH:**  
 Climb to 3400 direct OYORO and hold.

AWOS-3 <b>118,325</b>	MINNEAPOLIS CENTER <b>121.05 397.9</b>	UNICOM <b>122.8 (CTAF) ☺</b>
--------------------------	---	---------------------------------



CATEGORY	A	B	C	D
LNAV MDA	1340-1 352 (400-1)			
<b>☑</b> CIRCLING	1440-1 451 (500-1)	1540-1½ 551 (600-1½)	1680-2¼ 691 (700-2¼)	REIL Rwys 5, 14, 23 and 32 ☺ MIRL Rwys 5-23 and 14-32 ☺

EC-3, 25 FEB 2021 to 25 MAR 2021

EC-3, 25 FEB 2021 to 25 MAR 2021