

| | | |
|-------------|----------|-------------|
| APP CRS | Rwy Idg | 3900 |
| 226° | TDZE | 989 |
| | Apt Elev | 989 |

RNAV (GPS) RWY 23

BURNETT COUNTY (RZN)

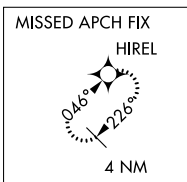
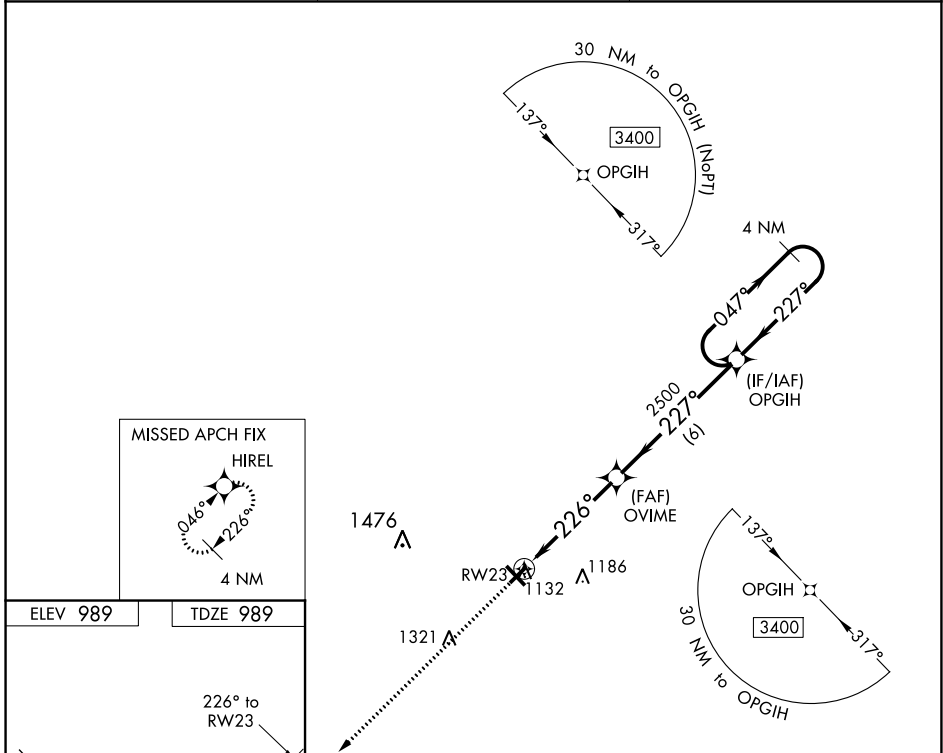
⚠ DME/DME RNP-0.3 NA. When local altimeter setting not received, use Rush City, MN altimeter setting and increase all MDA 80 feet; increase LNAV Cat C/D visibility 1/8 mile, and Circling Cat C/D visibility 1/4 mile. Helicopter visibility reduction below 1 SM NA. Night landing: Rwy 5, 23, 32, NA.

MISSED APPROACH: Climb to 3400 direct HIREL and hold.

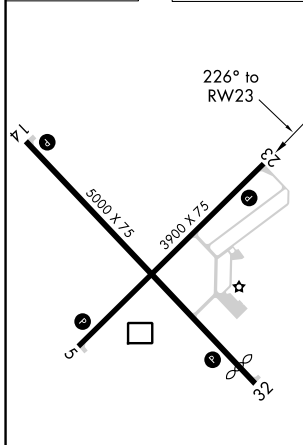
AWOS-3
118.325

MINNEAPOLIS CENTER
121.05 397.9

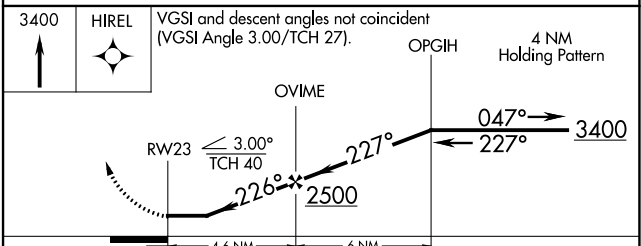
UNICOM
122.8 (CTAF) **0**



ELEV 989 TDZE 989



REIL Rws 5, 14, 23 and 32
MIRL Rws 5-23 and 14-32



| CATEGORY | A | B | C | D |
|-------------------|--------|-------------|--|--|
| LNAV MDA | 1440-1 | 451 (500-1) | 1440-1 ³ / ₈ | 451 (500-1 ³ / ₈) |
| C CIRCLING | 1440-1 | 451 (500-1) | 1540-1 ¹ / ₂ 551 (600-1 ¹ / ₂) | 1680-2 ¹ / ₄ 691 (700-2 ¹ / ₄) |

EC-3, 25 FEB 2021 to 25 MAR 2021

EC-3, 25 FEB 2021 to 25 MAR 2021