

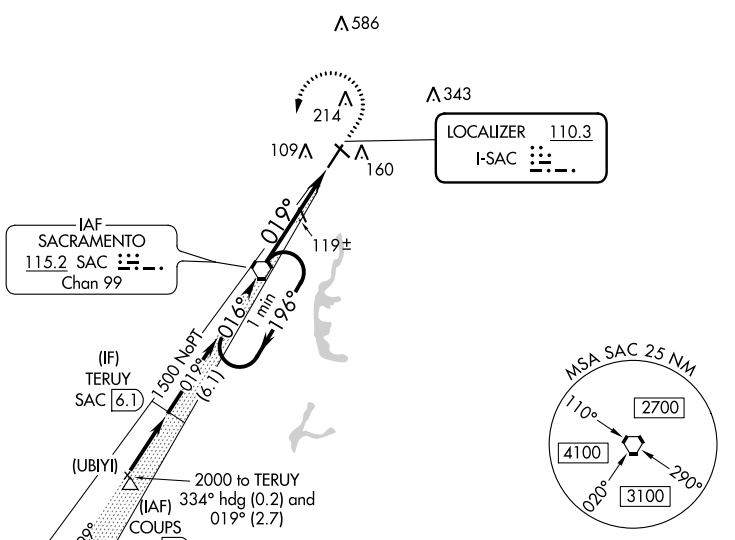
LOC I-SAC <b>110.3</b>	APP CRS <b>019°</b>	Rwy Idg TDZE Apt Elev	<b>5503</b> <b>21</b> <b>24</b>
---------------------------	------------------------	-----------------------------	---------------------------------------

**ILS or LOC RWY 2**  
SACRAMENTO EXECUTIVE (SAC)

**⚠** When local altimeter setting not received, use Sacramento Intl altimeter setting and increase DA to 322, increase all MDA 40 feet. Autopilot coupled approach NA below 335 feet. For inop MALSRL, increase S-ILS 2 all Cats visibility to 7/8 SM and S-LOC 2 Cat C/D visibility to 1 SM. For inop MALSRL when using Sacramento Intl altimeter setting, increase S-ILS 2 all Cats visibility to 7/8 SM.

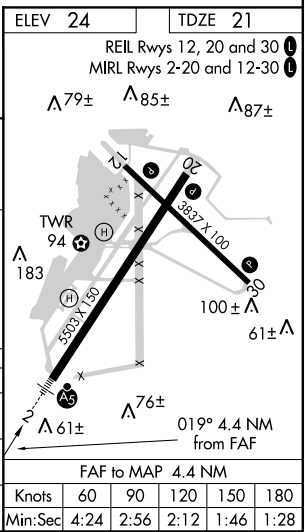
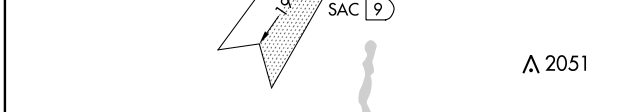
**MALSRL**  
MISSED APPROACH:  
Climb to 600 then climbing left turn to 1600 direct SAC VORTAC and hold.

ATIS <b>125.5</b>	NORCAL APP CON <b>125.25 257.9</b>	EXEC TOWER ★ <b>119.5 (CTAF) 0 278.8</b>	GND CON <b>125.0</b>	UNICOM <b>122.95</b>
----------------------	---------------------------------------	---	-------------------------	-------------------------



SW-2, 25 FEB 2021 to 25 MAR 2021

SW-2, 25 FEB 2021 to 25 MAR 2021



CATEGORY	A	B	C	D
S-ILS 2	294-1/2 273 (300-1/2)			
S-LOC 2	380-1/2	359 (400-1/2)	380-5/8	359 (400-5/8)
CIRCLING	500-1 476 (500-1)	520-1 496 (500-1)	520-1 1/2 496 (500-1 1/2)	580-2 556 (600-2)