

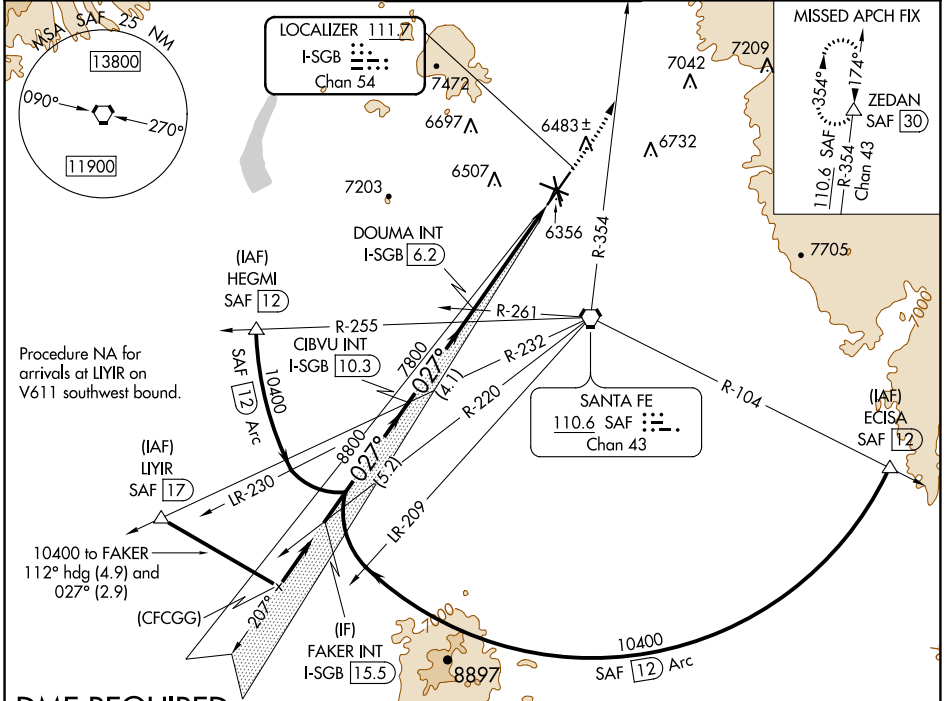
LOC/DME I-SGB	APP CRS	Rwy Idg	8366
111.7	027°	TDZE	6303
Chan 54		Apt Elev	6349

ILS or LOC RWY 2

SANTA FE MUNI (SAF)

DME required. MISSED APPROACH: Climb to 7300 then climbing left turn to 11000 on SAF VORTAC R-354 to ZEDAN/SAF 30 DME and hold.

ATIS 128.55	ALBUQUERQUE CENTER 132.8 346.35	SANTA FE TOWER ★ 119.5 (CTAF) 239.3	GND CON 121.7	UNICOM 122.95
-----------------------	---	---	-------------------------	-------------------------



SW-1, 25 FEB 2021 to 25 MAR 2021

SW-1, 25 FEB 2021 to 25 MAR 2021

DME REQUIRED

	VGSI and ILS glidepath not coincident (VGSI Angle 3.00/TCH 69)		7300	11000	ZEDAN
	FAKER INT I-SGB 15.5	CIBVU INT I-SGB 10.3	DOUMA INT I-SGB 6.2	* I-SGB 2.8	I-SGB 1.6
	10400	8800	7800		
	GS 3.00° TCH 53				
	5.2 NM	4.1 NM	3.4 NM	1.2	
CATEGORY	A	B	C	D	
S-ILS 2	6503-¾ 200 (200-¾)				
S-LOC 2	6740-1	437 (400-1)	6740-¼	437 (400-¼)	
CIRCLING	6800-1 451 (500-1)	6920-1 571 (600-1)	7340-3 991 (1000-3)	7660-3 1311 (1400-3)	

