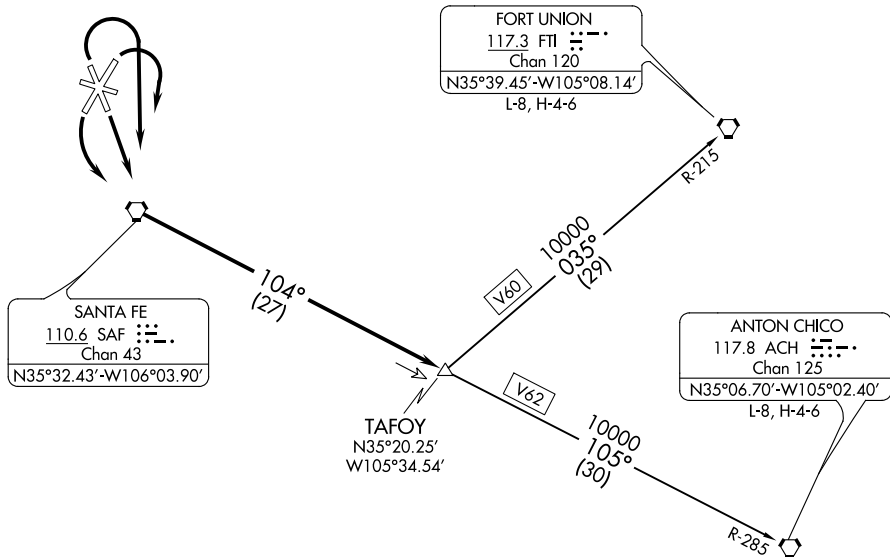


# TAFOY TWO DEPARTURE

SL-548 (FAA)

SANTA FE MUNI (SAF)  
SANTA FE, NEW MEXICO

ATIS 128.55  
GND CON  
121.7  
SANTA FE TOWER\*  
119.5 (CTAF) 239.3  
ALBUQUERQUE CENTER  
132.8 346.35



CAUTION: Mountainous terrain all quadrants.

NOTE: Takeoff runways 2, 33: Cat. A, B standard;  
Cat. C, D requires a minimum climb of 330'/NM until  
passing 9800' or a 2900' ceiling and 3 miles visibility.

NOTE: Chart not to scale.

## DEPARTURE ROUTE DESCRIPTION

TAKEOFF RUNWAY 15: Climb direct to....

TAKEOFF RUNWAY 20: Climbing left turn direct to....

TAKEOFF RUNWAYS 2 & 33: Climbing right turn direct to....

....the SAF VORTAC. Proceed via the SAF R-104 to TAFOY INT, climb and maintain 10000 MSL. Thence via assigned (transition) or (route).

ANTON CHICO TRANSITION (TAFOY2.ACH): From over TAFOY INT, via V62/ACH R-285 to ACH VORTAC. Thence via (assigned) route.

FORT UNION TRANSITION (TAFOY2.FTI): From over TAFOY INT via V60/FTI R-215 to FTI VORTAC. Thence via (assigned) route.

# TAFOY TWO DEPARTURE

SW-1, 25 FEB 2021 to 25 MAR 2021

SW-1, 25 FEB 2021 to 25 MAR 2021