

ZIAS FOUR DEPARTURE

AL-548 (FAA)

SANTA FE MUNI (SAF)
SANTA FE, NEW MEXICO

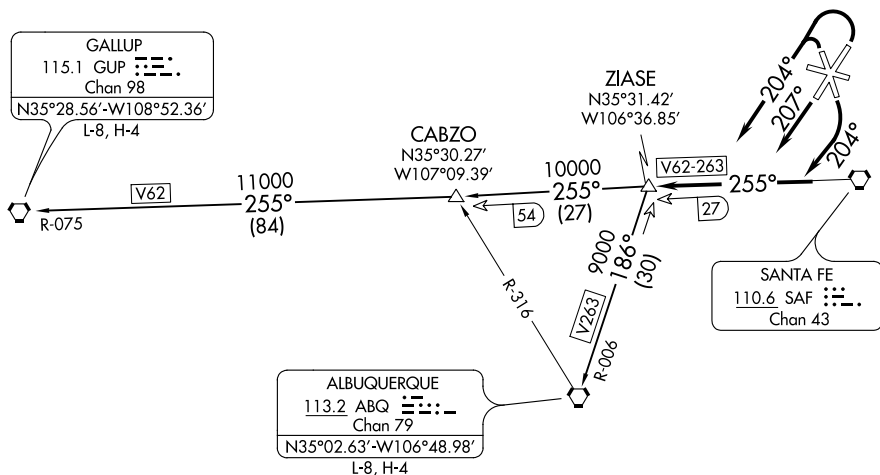
ATIS 128.55
GND CON
121.7
SANTA FE TOWER*
119.5 (CTAF) 239.3
ALBUQUERQUE CENTER
132.8 346.35

CAUTION: Mountainous terrain all quadrants.

**TOP ALTITUDE:
ASSIGNED BY ATC**

TAKEOFF MINIMUMS

Rwy 2: Standard with minimum climb of 235' per NM to 8200.
Rwy 33: Standard with minimum climb of 310' per NM to 8200.



SW-1, 25 FEB 2021 to 25 MAR 2021

SW-1, 25 FEB 2021 to 25 MAR 2021

NOTE: Chart not to scale.

DEPARTURE ROUTE DESCRIPTION

TAKEOFF RUNWAYS 2, 33: Climbing left turn heading 204° thence.

TAKEOFF RUNWAY 15: Climbing right turn heading 204° thence.

TAKEOFF RUNWAY 20: Climb heading 207° thence.

. intercept and proceed on SAF R-255 to ZIAS INT, then on (transition) or (assigned route).

ALBUQUERQUE TRANSITION (ZIAS4.ABQ): From over ZIAS INT on ABQ R-006 to ABQ VORTAC.

GALLUP TRANSITION (ZIAS4.GUP): From over ZIAS INT on SAF R-255 and GUP R-075 to GUP VORTAC.

ZIAS FOUR DEPARTURE

(ZIAS4.ZIASE) 27APR17

SANTA FE, NEW MEXICO
SANTA FE MUNI (SAF)