

(CWARD2.CWARD) 18004

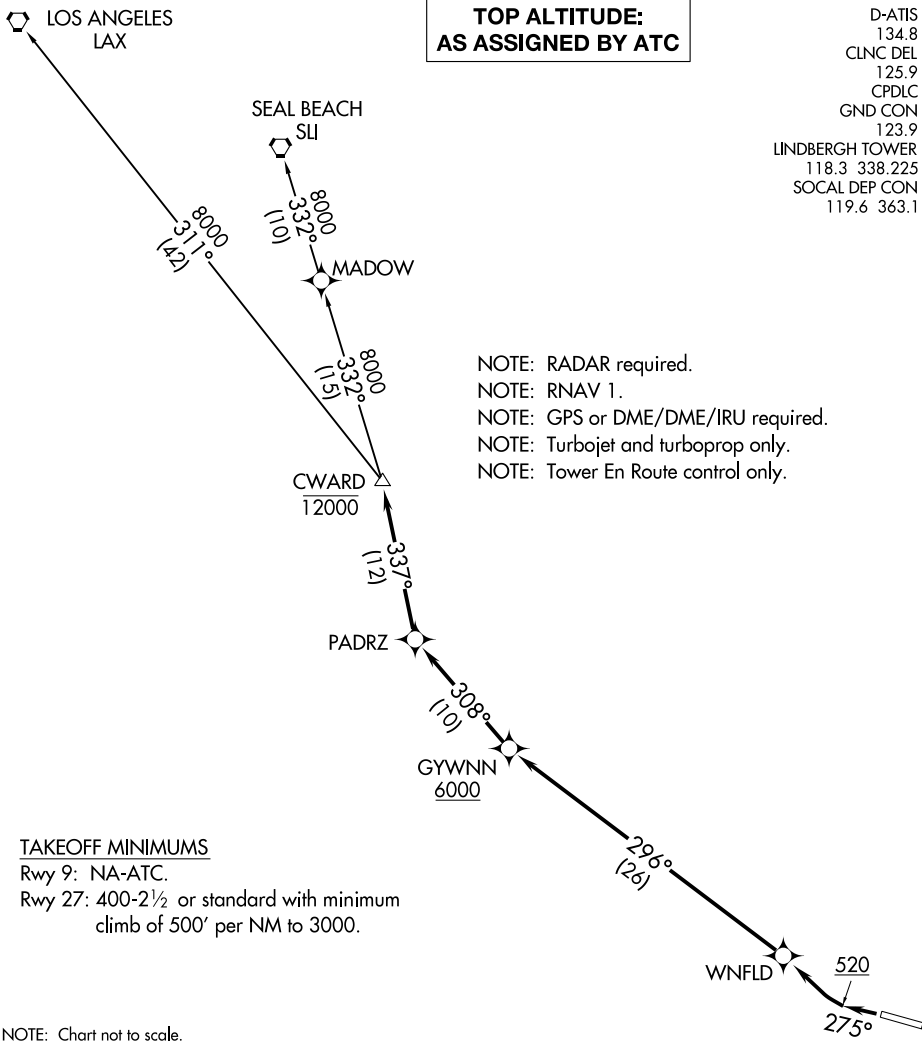
# CWARD TWO DEPARTURE (RNAV)

AL-373 (FAA)

SAN DIEGO INTL (SAN)  
SAN DIEGO, CALIFORNIA

**TOP ALTITUDE:  
AS ASSIGNED BY ATC**

D-ATIS	134.8
CLNC DEL	125.9
CPDLC	
GND CON	123.9
LINDBERGH TOWER	118.3 338.225
SOCAL DEP CON	119.6 363.1



- NOTE: RADAR required.
- NOTE: RNAV 1.
- NOTE: GPS or DME/DME/IRU required.
- NOTE: Turbojet and turboprop only.
- NOTE: Tower En Route control only.

### TAKEOFF MINIMUMS

Rwy 9: NA-ATC.  
 Rwy 27: 400-2½ or standard with minimum climb of 500' per NM to 3000.

NOTE: Chart not to scale.

### DEPARTURE ROUTE DESCRIPTION

TAKEOFF RUNWAY 27: Climb heading 275° to 520, then right turn direct WNFLD, then on track 296° to cross GYWNN at or above 6000, then on track 308° to PADRZ, then on track 337° to cross CWARD at or below 12000, thence. . . .  
 . . . on transition. Maintain ATC assigned altitude. Expect filed altitude 10 minutes after departure.

- LOS ANGELES TRANSITION (CWARD2.LAX)
- SEAL BEACH TRANSITION (CWARD2.SLI)

# CWARD TWO DEPARTURE (RNAV)

(CWARD2.CWARD) 07DEC17

SAN DIEGO, CALIFORNIA  
SAN DIEGO INTL (SAN)

SW-3, 25 FEB 2021 to 25 MAR 2021

SW-3, 25 FEB 2021 to 25 MAR 2021