

LOC/DME I-SAN	APP CRS	Rwy Idg	<b>7280</b>
<b>111.55</b>	<b>095°</b>	TDZE	<b>17</b>
Chan <b>52 (Y)</b>		Apt Elev	<b>17</b>

# ILS Y or LOC Y RWY 9

SAN DIEGO INTL (SAN)

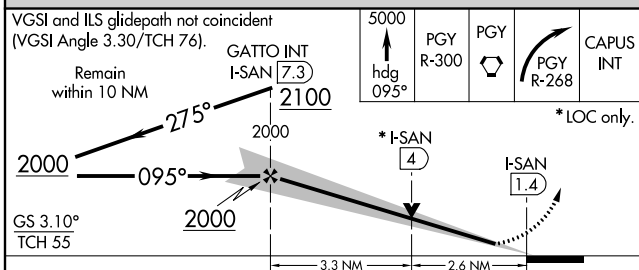
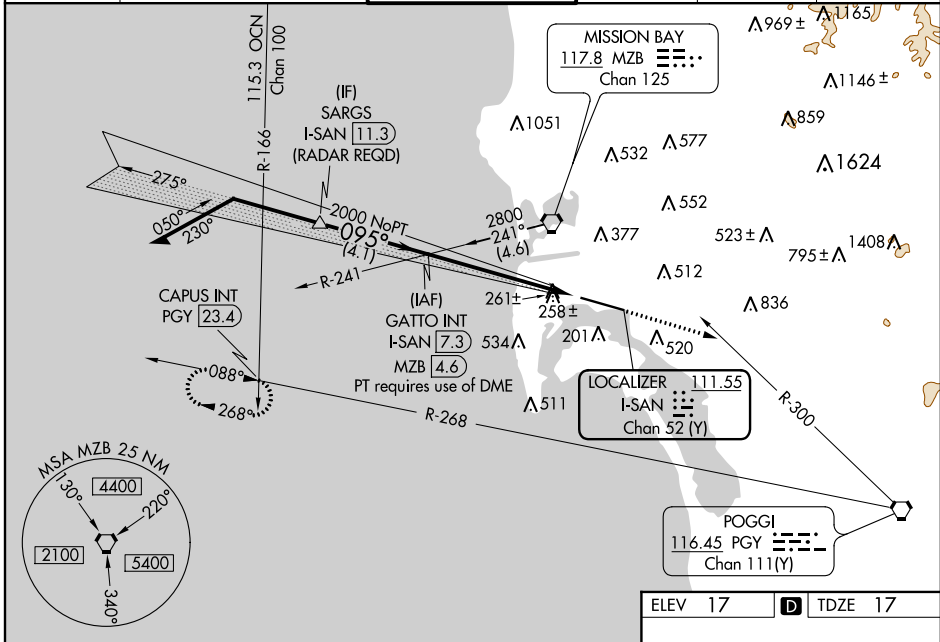
**⚠** Circling NA north of Rwy 9-27. Autopilot coupled approach NA below 530. When Circling to Rwy 27 at night, operational VGSI required, remain on or above VGSI glidepath until threshold. For inop ALS, increase S-ILS 9 all Cats visibility to 2½ SM. Rwy 9 helicopter visibility reduction below RVR 4000 NA. # Inop table does not apply to S-ILS 9.

MALSRL



MISSED APPROACH: Climb to 5000 on heading 095° and on PGY VORTAC R-300 to PGY VORTAC, then right turn on PGY VORTAC R-268 to CAPUS INT/23.4 DME and hold. # Missed approach requires minimum climb of 270 feet per NM to 4000.

D-ATIS	SOCAL APP CON	LINDBERGH TOWER	GND CON	CLNC DEL	CPDLC
<b>134.8</b>	<b>119.6 363.1 (WEST)</b> <b>124.35 279.625 (EAST)</b>	<b>118.3 338.225</b>	<b>123.9</b>	<b>125.9</b>	



ELEV 17	TDZE 17
095° 5.9 NM from FAF TWR 159 9400 X 200 65±, 407±, 175, 70, 48, 176	
TDZ/CL Rwy 9 and 27 HIRL Rwy 9-27	
FAF to MAP 5.9 NM	
Knots	60 90 120 150 180
Min:Sec	5:54 3:56 2:57 2:22 1:58

CATEGORY	A	B	C	D
S-ILS 9#		258/40	241 (300-¾)	
S-ILS 9		751-2	734 (800-2)	
S-LOC 9	960/40	943 (1000-¾)	960-2	943 (1000-2)
<b>C</b> CIRCLING	960-1¼	943 (1000-1¼)	960-2¾ 943 (1000-2¾)	960-3 943 (1000-3)

SW-3, 25 FEB 2021 to 25 MAR 2021

SW-3, 25 FEB 2021 to 25 MAR 2021