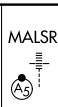


LOC/DME I-SAN	APP CRS	Rwy Idg	7280
111.55	095°	TDZE	17
Chan 52 (Y)		Apt Elev	17

ILS Z or LOC Z RWY 9

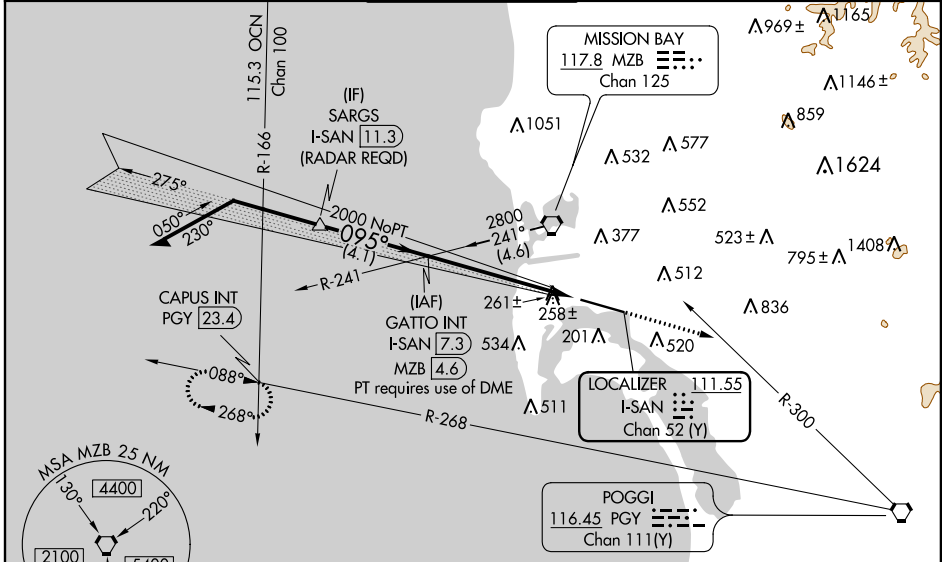
SAN DIEGO INTL (SAN)

⚠ Circling NA north of Rwy 9-27. Autopilot coupled approach NA below 530. When Circling to Rwy 27 at night, operational VGSi required, remain on or above VGSi glidepath until threshold. For inop ALS, increase S-LOC Cat A/B visibility to RVR 5500, and Cat C/D to 1 3/8 SM. LOC only: Rwy 9 helicopter visibility reduction below RVR 4000 NA.



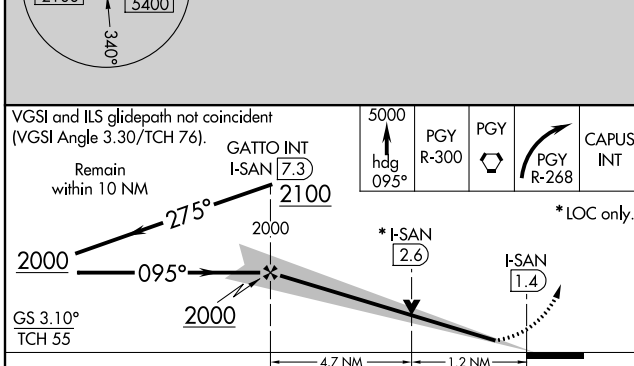
MISSED APPROACH: Climb to 5000 on heading 095° and on PGY VORTAC R-300 to PGY VORTAC, then right turn on PGY VORTAC R-268 to CAPUS INT/23.4 DME and hold. #Missed approach requires minimum climb of 280 feet per NM to 3800; if unable to meet climb gradient, see ILS Y or LOC Y RWY 9.

D-ATIS	SOCAL APP CON	LINDBERGH TOWER	GND CON	CLNC DEL	CPDLC
134.8	119.6 363.1 (WEST) 124.35 279.625 (EAST)	118.3 338.225	123.9	125.9	



SW-3, 25 FEB 2021 to 25 MAR 2021

SW-3, 25 FEB 2021 to 25 MAR 2021



CATEGORY	A	B	C	D
S-ILS 9#	217/18 200 (200-1/2)			
S-LOC 9	520/40	503 (600-3/4)	520/55	503 (600-1)
C CIRCLING	800-1 783 (800-1)	820-1 803 (900-1)	820-2 1/4 803 (900-2 1/4)	940-3 923 (1000-3)

ELEV 17	D TDZE 17
---------	------------------

TDZ/CL Rwys 9 and 27
HIRL Rwy 9-27

FAF to MAP 5.9 NM

Knots	60	90	120	150	180
Min:Sec	5:54	3:56	2:57	2:22	1:58