

# LUCK1 ONE ARRIVAL (RNAV)

SW-3, 25 FEB 2021 to 25 MAR 2021

## ARRIVAL ROUTE DESCRIPTION

HOGGZ TRANSITION (HOGGZ.LUCK11)

IMPERIAL TRANSITION (IPL.LUCK11)

LVELL TRANSITION (LVELL.LUCK11)

MOMAR TRANSITION (MOMAR.LUCK11)

PARKER TRANSITION (PKE.LUCK11)

TTRUE TRANSITION (TTRUE.LUCK11)

From LUCK1 on track 239° to cross LYNDI at or above 5000 and at 210K. Expect RNAV (GPS) RWY 27 or LOC RWY 27 approach.

**LOST COMMUNICATIONS:** In the event of lost communication: join the San Diego RNAV (GPS) RWY 27 approach at LYNDI. If unable, proceed direct VYDDA and join the San Diego LOC RWY 27 approach.

SOCAL APP CON  
124.35 279.625  
D-ATIS  
134.8

NOTE: RADAR required.

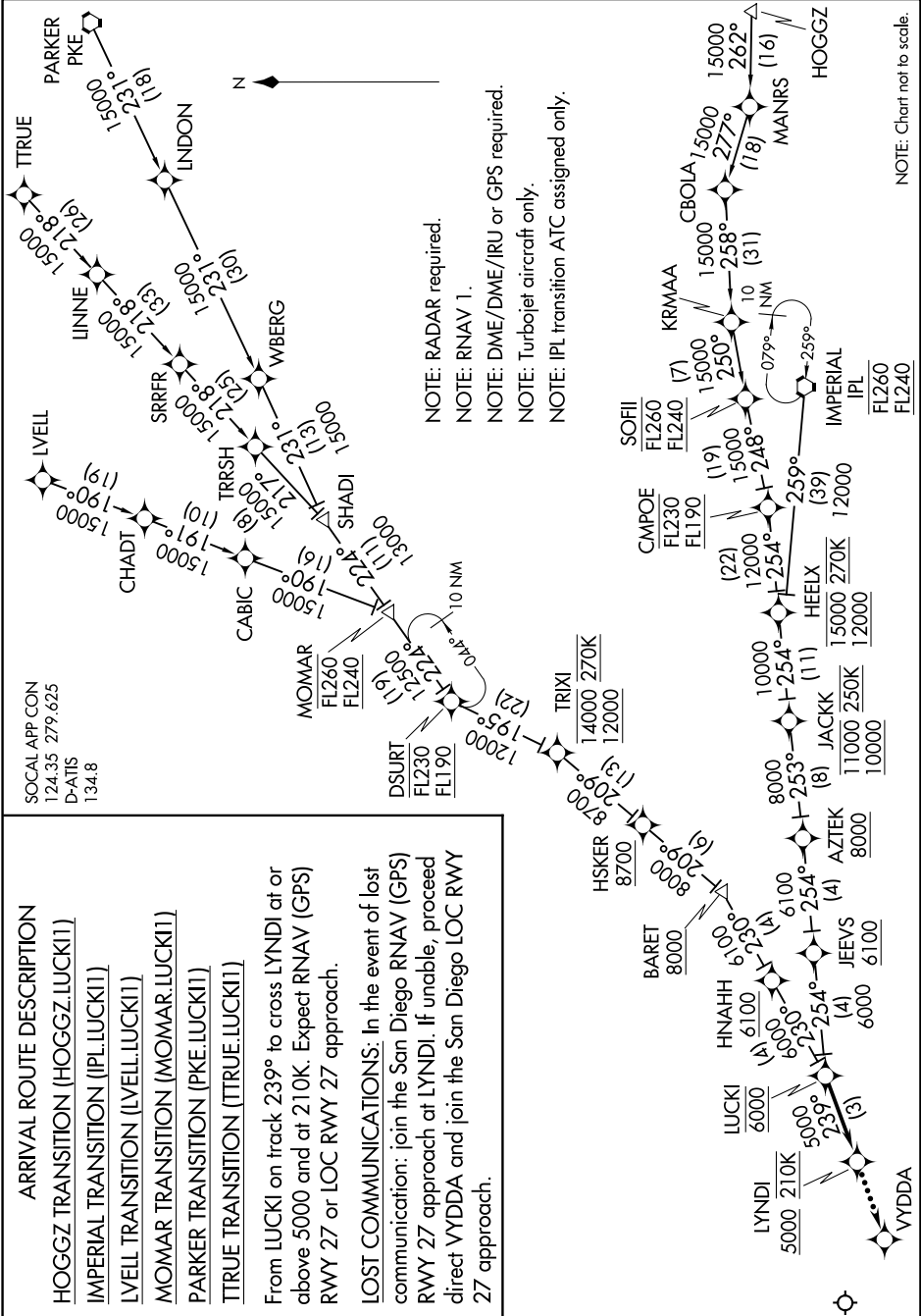
NOTE: RNAV 1.

NOTE: DME/DME/IRU or GPS required.

NOTE: Turbojet aircraft only.

NOTE: IPL transition ATC assigned only.

NOTE: Chart not to scale.



# LUCK1 ONE ARRIVAL (RNAV)

SW-3, 25 FEB 2021 to 25 MAR 2021