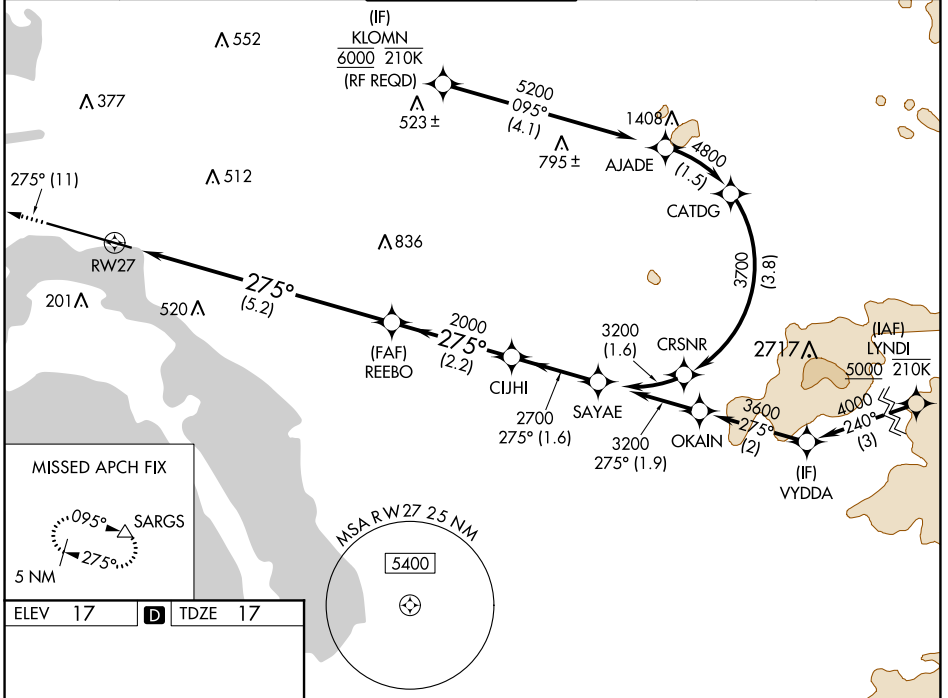


APP CRS 275°	Rwy Idg TDZE Apt Elev	7590 17 17
------------------------	-----------------------------	---------------------------------------

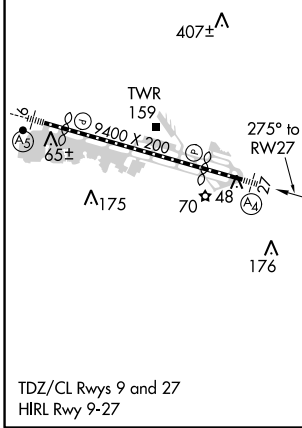
RNAV (RNP) Z RWY 27

SAN DIEGO INTL (SAN)

RNP AR APCH.		MALS	MISSED APPROACH: Climb to 2500 on track 275° to SARGs and hold.		
<p>▼ For uncompensated Baro-VNAV systems, procedure NA below 6°C or above 46°C. Straight-in Rwy 27 at night, operational VGSI required, remain on or above VGSI glidepath until threshold. For inop ALS, increase RNP 0.30 all Cats visibility to 2½ SM.</p>					
D-ATIS 134.8	SOCAL APP CON 119.6 363.1 (WEST) 124.35 279.625 (EAST)	LINDBERGH TOWER 118.3 338.225	GND CON 123.9	CLNC DEL 125.9	CPDLC



ELEV 17	D	TDZE 17
---------	----------	---------



2500	SARGs	See planview for multiple IF locations.			
tr 275°		REEBO	CUJHI	SAYAE	
		2000	2700	3200	GP 3.50° TCH 65
		RW27			
		5.2 NM	2.2 NM	1.6 NM	
CATEGORY	A	B	C	D	
RNP 0.11 DA		617-1½	600 (600-1½)		
RNP 0.30 DA		778-2	761 (800-2)		
AUTHORIZATION REQUIRED					

SW-3, 25 FEB 2021 to 25 MAR 2021

SW-3, 25 FEB 2021 to 25 MAR 2021