

SAVANNAH, GEORGIA

# HI-ILS or LOC RWY 10

LOC I-SAV <b>111.35</b> Chan <b>50 (Y)</b>	APCH CRS <b>097°</b>	Rwy ldg TDZE Arprt Elev	<b>9351</b> <b>30</b> <b>50</b>	JAL-380 [USAF]	SAVANNAH/HILTON HEAD INTL (KSAV)
--	-------------------------	-------------------------------	---------------------------------------	----------------	----------------------------------

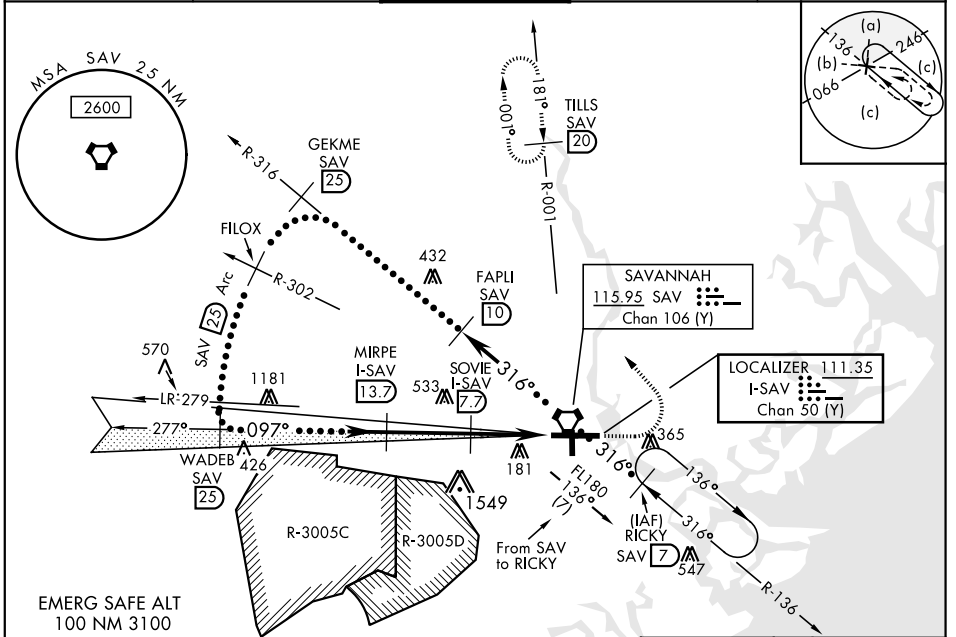
**DME Required.**

Procedure NA when Control Tower closed.  
 \* When ALS inop, increase vis to RVR 40  
 \*\* When ALS inop, increase vis to 1 1/2 miles.

MALS R

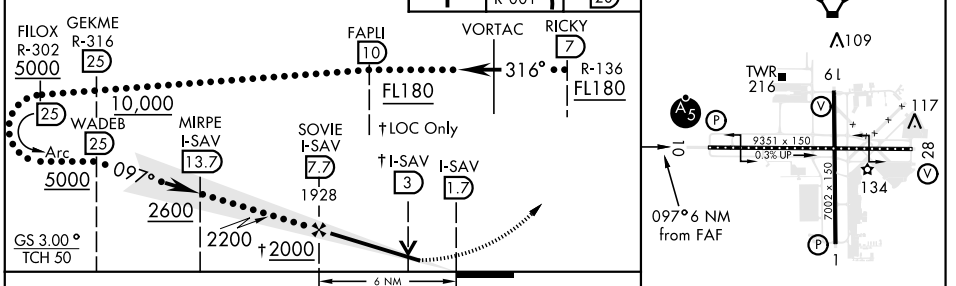
MISSED APPROACH: Climb to 800, then climbing left turn to 4000 via heading 330° and SAV VORTAC R-001 to TILLS/SAV 20 DME and hold.

ATIS ★ <b>123.75</b>	SAVANNAH APP CON <b>125.3 353.775</b>	SAVANNAH TOWER ★ <b>119.1 (CTAF) 0 257.8</b>	GND CON <b>121.9 348.6</b>	CLNC DEL <b>119.55 291.775</b>
-------------------------	--	---	-------------------------------	-----------------------------------



Use I-SAV DME when on the localizer course.  
 VGS1 and ILS glidepath not coincident.  
 VGS1 angle 3.00/TCH 69.

ELEV 50 TDZE 30



CATEGORY	C	D	E
S-ILS 10 *	230/18	200	(200-1/2)
S-LOC 10 **	500/50	470	(500-1)
CIRCLING	740-2 690 (700-2)	740-2 1/4 690 (700-2 1/4)	900-3 850 (900-3)

REIL Rwy 19, 28  
 HIRL all Rwy  
 TDZL/CL Rwy 10

SAVANNAH, GEORGIA 32° 08' N-81° 12' W SAVANNAH/HILTON HEAD INTL (KSAV)

# HI-ILS or LOC RWY 10

SE-4, 25 FEB 2021 to 25 MAR 2021

SE-4, 25 FEB 2021 to 25 MAR 2021