

RNAV (RNP) Y RWY 28

SAVANNAH/HILTON HEAD INTL (SAV)

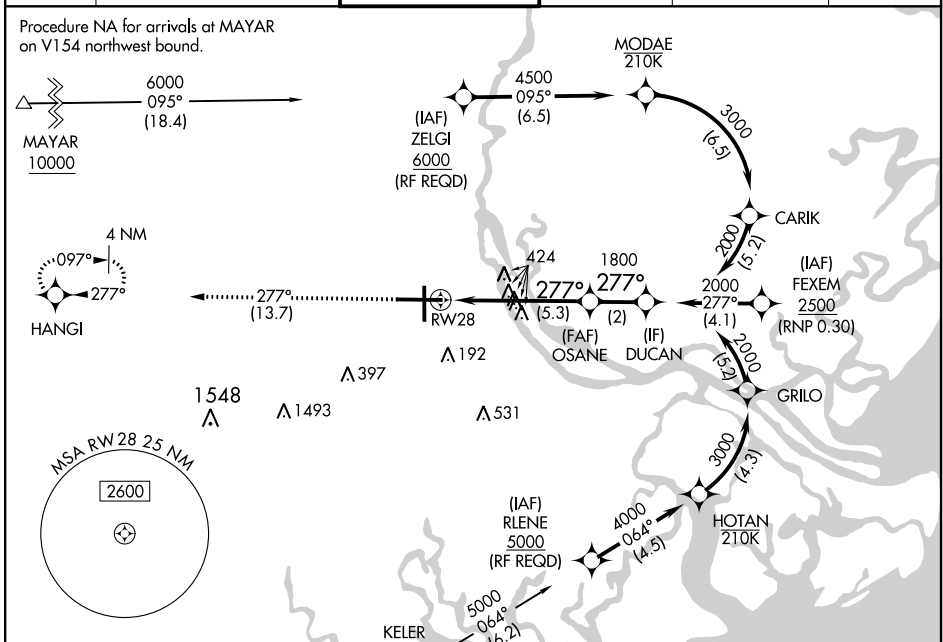
APP CRS	Rwy Idg	9351
277°	TDZE	50
	Apt Elev	50

RNP AR APCH. At KELER, and MAYAR: (RNP 1.0). At ZELGI, FEXEM, and RLENE: (RNP 0.30).

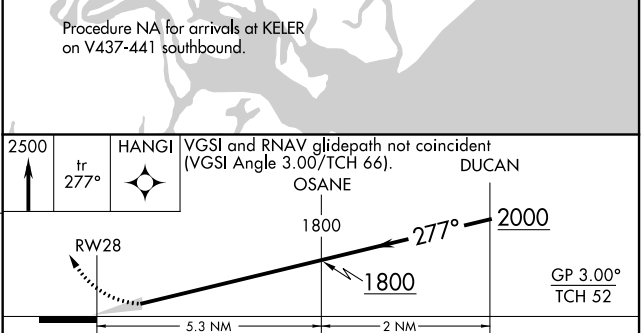
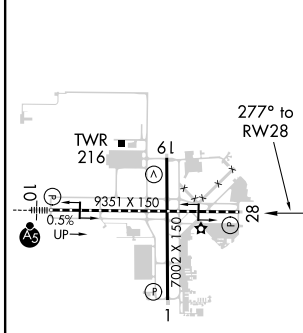
⚠ For uncompensated Baro-VNAV systems, procedure NA below -1.5°C or above 54°C.
⚠ When local altimeter setting not received, procedure NA.

MISSED APPROACH: Climb to 2500 on track 277° to HANGI and hold.

ATIS 123.75	SAVANNAH APP CON* 125.3 371.875	SAVANNAH TOWER* 119.1 (CTAF) 257.8	GND CON 121.9 348.6	CLNC DEL 119.55 291.775	UNICOM 122.95
-----------------------	---	--	-------------------------------	-----------------------------------	-------------------------



ELEV 50	D	TDZE 50
---------	----------	---------



CATEGORY	A	B	C	D
RNP 0.15 DA		404-1	354 (400-1)	
RNP 0.30 DA		471-1¼	421 (500-1¼)	

TDZ/CL Rwy 10
 REIL Rws 19 and 28
 HIRL Rws 1-19 and 10-28

AUTHORIZATION REQUIRED

SE-4, 25 FEB 2021 to 25 MAR 2021

SE-4, 25 FEB 2021 to 25 MAR 2021