

APP CRS <b>144°</b>	Rwy Idg <b>3305</b>
	TDZE <b>1288</b>
	Apt Elev <b>1288</b>

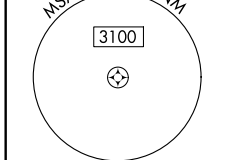
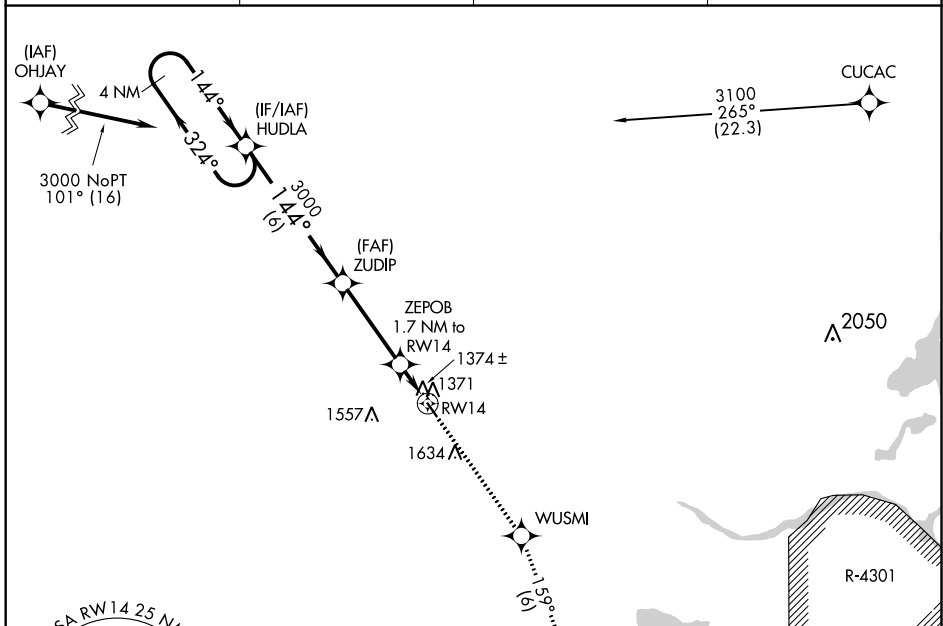
# RNAV (GPS) RWY 14

STAPLES MUNI (SAZ)

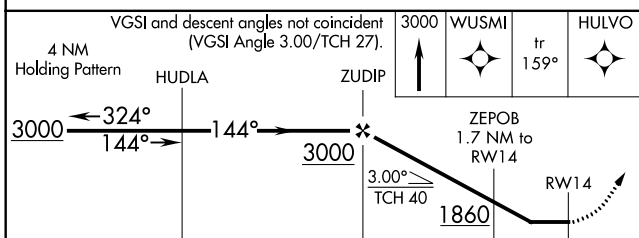
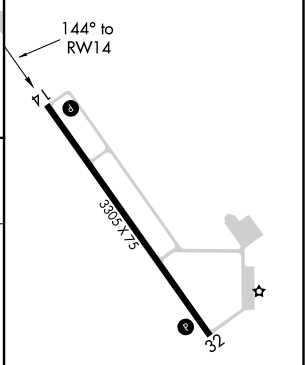
**⚠** Rwy 14 Straight-in and Circling minimums NA at night. Rwy 14 helicopter visibility reduction below 1 SM NA. DME/DME RNP-0.3 NA. When local altimeter setting not received, use Pine River altimeter setting and increase all MDA 80 feet and all Cat C visibilities ¼ SM.

**MISSED APPROACH:** Climb to 3000 direct WUSMI and on track 159° to HULVO and hold.

AWOS-3 <b>118.325</b>	MINNEAPOLIS CENTER <b>118.05 239.0</b>	GCO <b>121.725</b>	CTAF <b>122.9</b>
--------------------------	---	-----------------------	----------------------



ELEV 1288	TDZE 1288
-----------	-----------



CATEGORY	A	B	C	D
LNNAV MDA	1640-1 352 (400-1)			NA
<b>CIRCLING</b>	1780-1 492 (500-1)	1940-1 652 (700-1)	1940-1¼ 652 (700-1¼)	NA

REIL Rwy 14 and 32  
MIRL Rwy 14-32

NC-1, 25 FEB 2021 to 25 MAR 2021

NC-1, 25 FEB 2021 to 25 MAR 2021