


WAAS CH <b>78306</b> <b>W07A</b>	APP CRS <b>074°</b>	Rwy Idg TDZE Apt Elev	<b>6052</b> <b>13</b> <b>14</b>
--	------------------------	-----------------------------	---------------------------------------

# RNAV (GPS) RWY 7

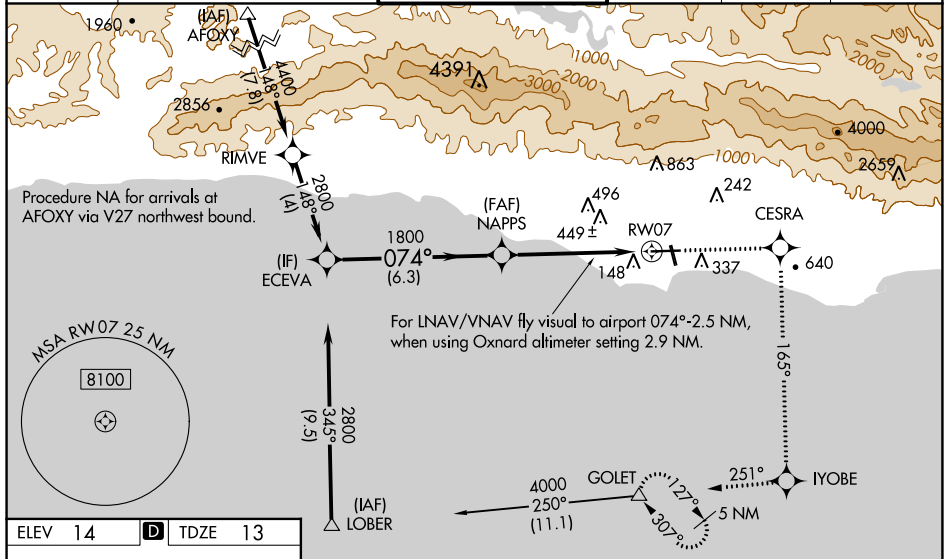
SANTA BARBARA MUNI (SBA)

**▼** DME/DME RNP -0.3 NA. Inoperative table does not apply to LNAV/VNAV.  
**▲** For inoperative MALSR when using Oxnard altimeter setting, increase LPV all Cats visibility to 1 1/2, and LNAV Cat C to 1 1/4, Cat D to 2. For inoperative MALSR, increase LPV all Cats visibility to RVR 6000. For uncompensated Baro-VNAV systems, LNAV/VNAV NA below -15°C (5°F) or above 49°C (120°F). Baro-VNAV NA when using Oxnard altimeter setting. When local altimeter setting not received, use Oxnard altimeter setting and increase all DAs/MDAs 100 feet, and increase, LNAV/VNAV visibility Cat C and D 1/4 mile, LNAV Cat C to RVR 6000, Cat D 1/2 mile, Circling Cat A visibility 1/2 mile, Cat C visibility 1/2 mile. VDP NA when using Oxnard altimeter setting. Night landing Rwy 15R NA.

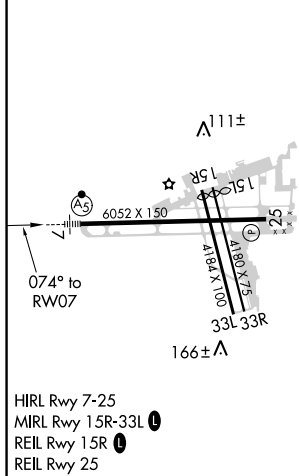
**MALSR**  


**MISSED APPROACH:** Climb to 4000 direct CESRA and right turn via 165° track to IYOBE and right turn via 251° track to GOLET and hold, continue climb-in-hold to 4000.

ATIS <b>132.65</b>	SANTA BARBARA APP CON* <b>120.55 319.15</b> (151°-329°) <b>125.4 291.1</b> (330°-150°)	SANTA BARBARA TOWER* <b>119.7</b> (CTAF) <b>0 254.35</b>	GND CON <b>121.7</b>	CLNC DEL <b>132.9</b>	UNICOM <b>122.95</b>
-----------------------	--	---	-------------------------	--------------------------	-------------------------



ELEV 14	<b>D</b>	TDZE 13
---------	----------	---------



	ECEVA	NAPPS	RWY 7	GOLET
Procedure Turn NA				
	4000	CESRA	IYOBE	GOLET
	↑	✦	tr 165°	tr 251°
		*LNAV only	For LNAV/VNAV fly visual to airport, 074° -2.5 NM, when using Oxnard altimeter setting 2.9 NM.	
		*1.6 NM to RWY 7		
CATEGORY	A	B	C	D
LPV DA	380/40 367 (400-3/4)			
LNAV/VNAV DA	866-2	853 (900-2)	853 (900-2 1/2)	866-2 3/4
LNAV MDA	560/24	547 (600- 1/2)	560/50	560/60
			547 (600-1)	547 (600-1 1/4)
CIRCLING	800-1	800-1 1/4	800-2 1/4	1000-3
	786 (800-1)	786 (800-1 1/4)	786 (800-2 1/4)	986 (1000-3)

SW-3, 25 FEB 2021 to 25 MAR 2021

SW-3, 25 FEB 2021 to 25 MAR 2021