

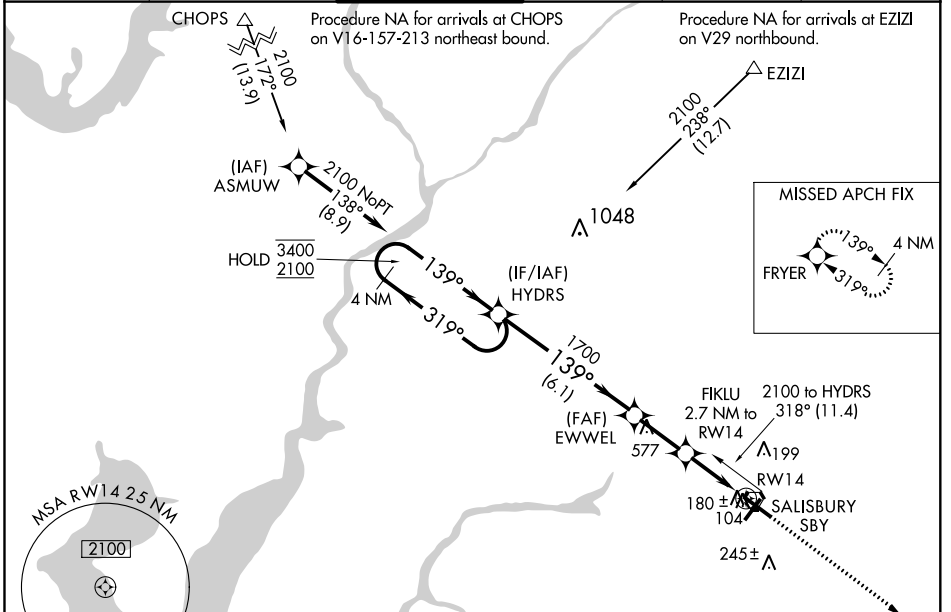
WAAS CH 56320 W14A	APP CRS 139°	Rwy Idg TDZE Apt Elev	6400 49 53
--	------------------------	-----------------------------	---------------------------------------

RNAV (GPS) RWY 14

SALISBURY-OCEAN CITY WICOMICO RGNL (SBY)

RNP APCH.		MISSED APPROACH: Climb to 2000 direct FRYER and hold.	
<p>T Rwy 14 helicopter visibility reduction below 3/4 SM NA. A For uncompensated Baro-VNAV systems, LNAV/VNAV NA below -16° C or above 54° C.</p>			

ASOS 118.325	PATUXENT APP CON ★ 127.95 314.0	SALISBURY TOWER ★ 119.425 (CTAF) 0	GND CON 123.775	CLNL DEL ★ 123.775	UNICOM 122.95
------------------------	---	---	---------------------------	------------------------------	-------------------------



NE-3, 25 FEB 2021 to 25 MAR 2021

NE-3, 25 FEB 2021 to 25 MAR 2021

4 NM Holding Pattern		HYDRS		EWWEL		FIKLU 2.7 NM to RW14		2000 FRYER	
3400	← 319°	1700	139° →	1700	139° →	1700	139° →	2000	FRYER
2100	← 139°	1700	139° →	1700	139° →	1700	139° →	2000	FRYER
GP 3.00°		TCH 45		*940		*1.1 NM to RW14		*LNAV only	
		6.1 NM		2.3 NM		1.6 NM		1.1 NM	
CATEGORY	A	B	C	D					
LPV DA	363-1		314 (400-1)						
LNAV/VNAV DA	453-1½		404 (400-1½)						
LNAV MDA	440-1	391 (400-1)	440-1½	391 (400-1½)	440-1¼	391 (400-1¼)			
CIRCLING	480-1	520-1	560-1½	700-2					
	427 (500-1)	467 (500-1)	507 (600-1½)	647 (700-2)					

