

WAAS CH 78018 W23A	APP CRS 229°	Rwy Idg 5000 TDZE 49 Apt Elev 53
--	------------------------	---

RNAV (GPS) RWY 23

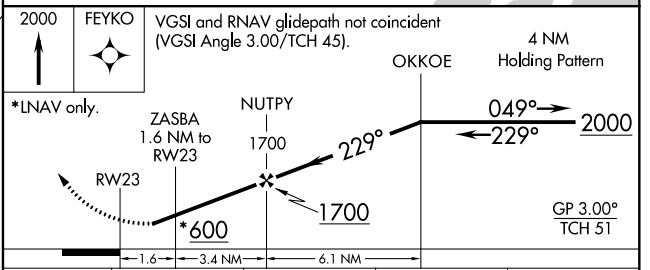
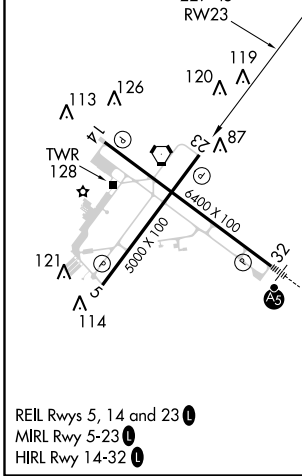
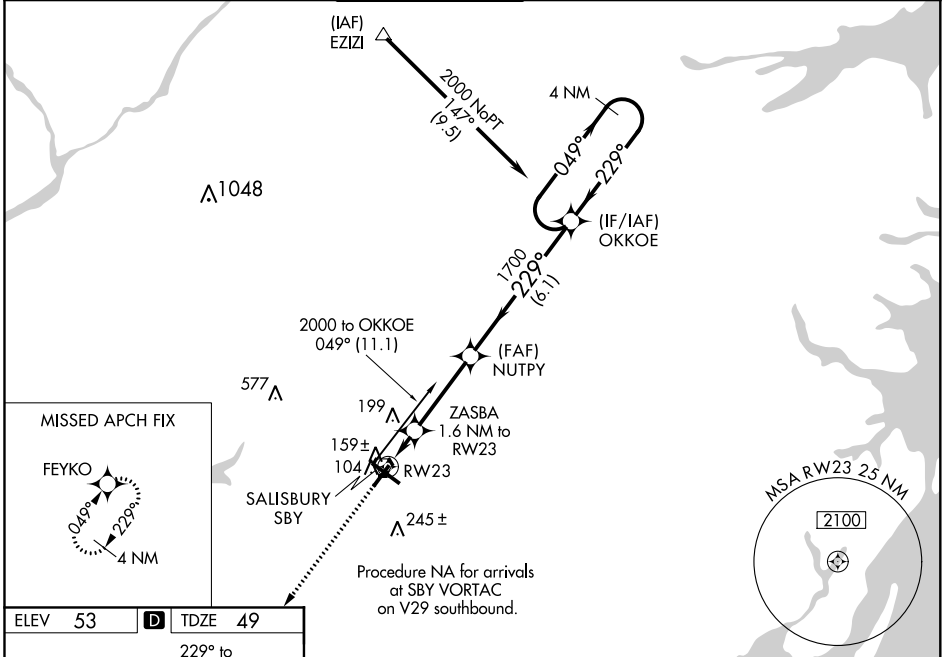
SALISBURY-OCEAN CITY WICOMICO RGNL (SBY)

RNP APCH.

▼ Baro-VNAV NA when using Georgetown altimeter setting. For uncompensated Baro-VNAV systems, LNAV/VNAV NA below -15°C or above 43°C. Rwy 23 helicopter visibility reduction below ¾ SM NA. When local altimeter setting not received use Georgetown altimeter setting and increase all DA 52 feet and all MDA 60 feet; increase LPV all Cats and LNAV Cats C/D visibility ¼ mile.

MISSED APPROACH: Climb to 2000 direct FEYKO and hold.

ASOS 118.325	PATUXENT APP CON* 127.95 314.0	SALISBURY TOWER* 119.425 (CTAF) 0	GND CON 123.775	CLNL DEL* 123.775	UNICOM 122.95
------------------------	--	---	---------------------------	-----------------------------	-------------------------



CATEGORY	A	B	C	D
LPV DA		374-1	325 (400-1)	
LNAV/VNAV DA		451-1½	402 (400-1½)	
LNAV MDA		420-1	371 (400-1)	420-1¼ 371 (400-1¼)
CIRCLING	480-1 427 (500-1)	520-1 467 (500-1)	520-1½ 467 (500-1½)	620-2 567 (600-2)

NE-3, 25 FEB 2021 to 25 MAR 2021

NE-3, 25 FEB 2021 to 25 MAR 2021