

WAAS CH <b>48912</b> <b>W32A</b>	APP CRS <b>319°</b>	Rwy Idg <b>6400</b> TDZE <b>53</b> Apt Elev <b>53</b>
--	------------------------	---

# RNAV (GPS) RWY 32

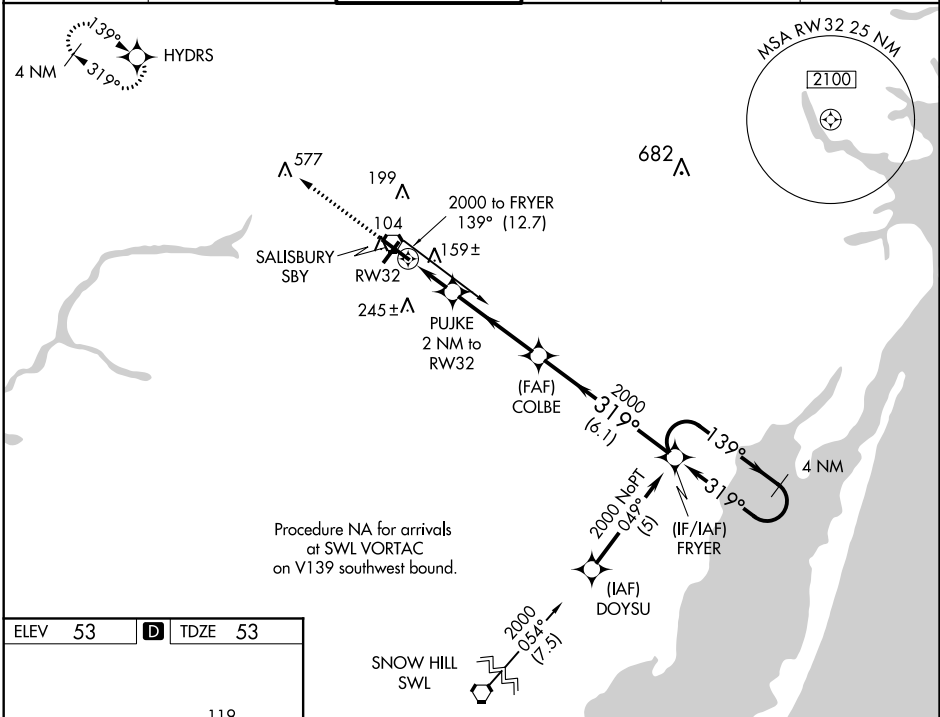
SALISBURY-OCEAN CITY WICOMICO RGNL (SBY)

**⚠** For uncompensated Baro-VNAV systems, LNAV/VNAV NA below -15°C (5°F) or above 49°C (120°F). DME/DME RNP-0.3 NA. When local altimeter setting not received, use Georgetown altimeter setting and increase all DA 52 feet and all MDA 60 feet, increase LNAV Cat C visibility ¼ mile. For inoperative MALSR, increase LNAV Cat D visibility to 1¼. VDP and Baro-VNAV NA when using Georgetown altimeter setting.

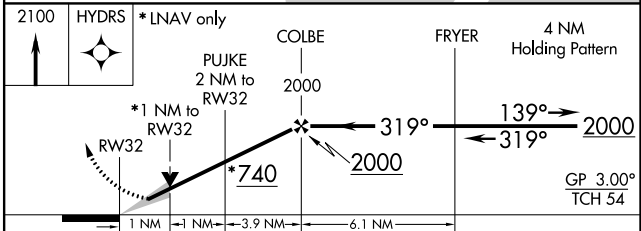
**MALSR**

**MISSED APPROACH:**  
Climb to 2100 direct  
HYDRS and hold.

ASOS <b>118.325</b>	PATUXENT APP CON* <b>127.95 314.0</b>	SALISBURY TOWER* <b>119.425</b> (CTAF) <b>0</b>	GND CON <b>123.775</b>	CLNL DEL* <b>123.775</b>	UNICOM <b>122.95</b>
------------------------	--	--	---------------------------	-----------------------------	-------------------------



ELEV 53	<b>D</b>	TDZE 53
---------	----------	---------



CATEGORY	A	B	C	D
LPV DA		253-½	200 (200-½)	
LNAV/VNAV DA		458-1	405 (500-1)	
LNAV MDA		420-½	367 (400-½)	420-1 367 (400-1)
CIRCLING	480-1 427 (500-1)	520-1 467 (500-1)	520-1½ 467 (500-1½)	620-2 567 (600-2)

NE-3, 25 FEB 2021 to 25 MAR 2021

NE-3, 25 FEB 2021 to 25 MAR 2021