

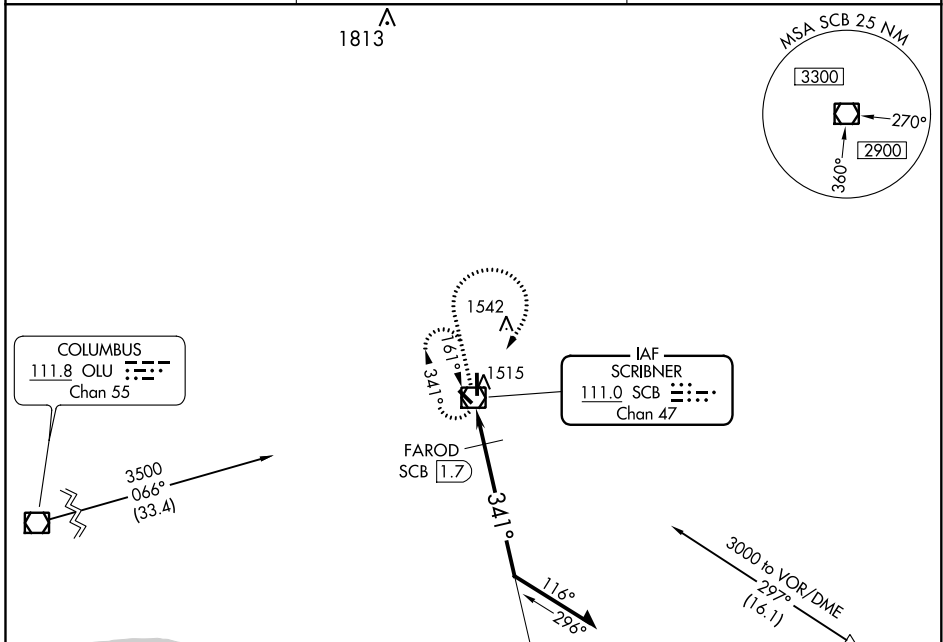
VOR/DME SCB 111.0 Chan 47	APP CRS 341°	Rwy Idg TDZE Apt Elev	4200 1319 1325
---	------------------------	-----------------------------	---

VOR/DME RWY 35

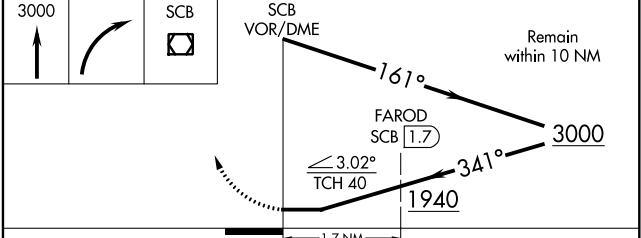
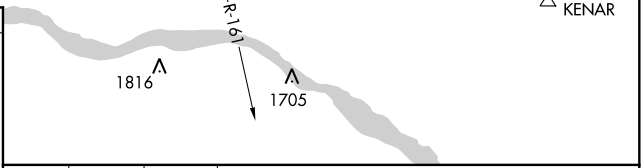
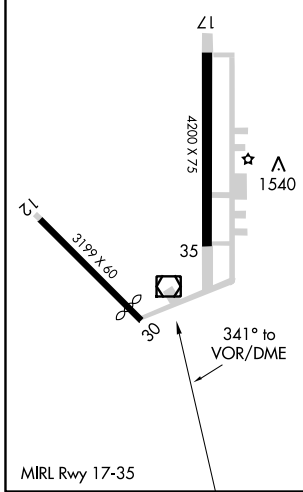
SCRIBNER STATE (SCB)

NA Use Fremont altimeter setting. MISSED APPROACH: Climb to 3000 then right turn direct SCB VOR/DME and hold.

FET AWOS-3 121.275	OMAHA APP CON 120.1 354.05	CTAF 122.9
------------------------------	--------------------------------------	----------------------



ELEV 1325	TDZE 1319
-----------	-----------



CATEGORY	A	B	C	D
S-35	1800-1	481 (500-1)	NA	
<input checked="" type="checkbox"/> CIRCLING	1900-1	575 (600-1)	NA	

NC-2, 25 FEB 2021 to 25 MAR 2021

NC-2, 25 FEB 2021 to 25 MAR 2021