

VOR/DME LVT <b>108.4</b> Chan <b>21</b>	APP CRS <b>107°</b>	Rwy Idg TDZE Apt Elev <b>N/A</b> <b>1545</b>
---	------------------------	---

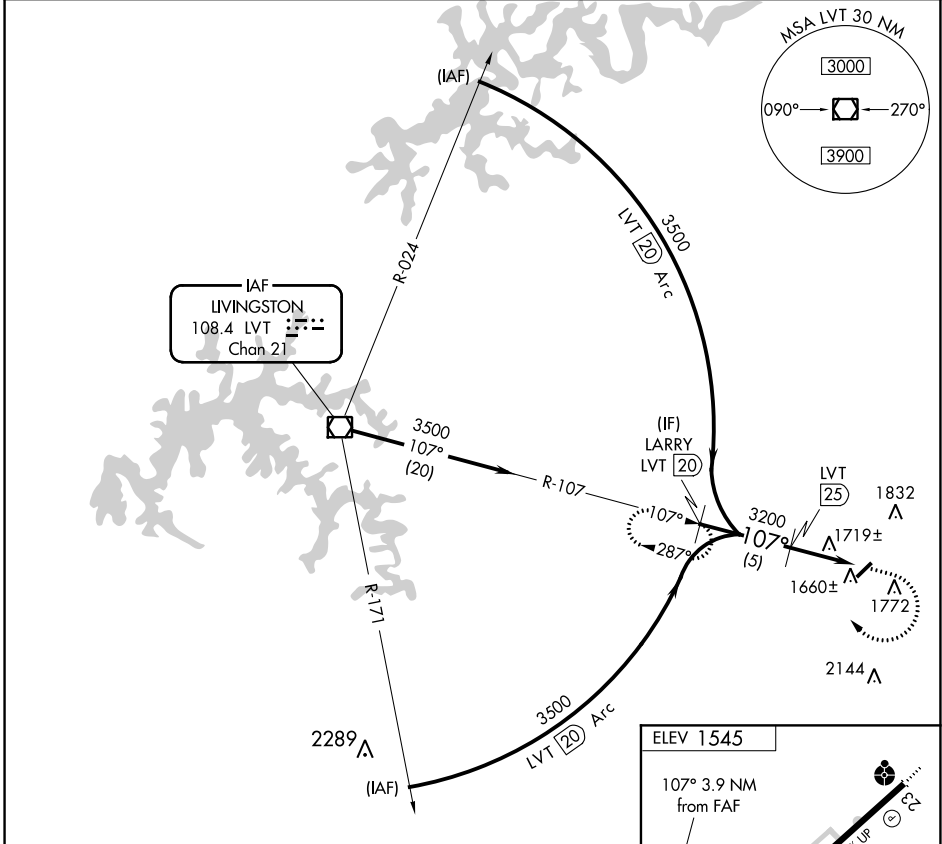
# VOR/DME-A

SCOTT MUNI (SCX)

**⚠** Circling to Rwy 5 NA at night. Helicopter visibility reduction below 1 SM NA. When local altimeter setting not received, use Monticello altimeter setting and increase all MDA 240 feet and Circling Cat C 1 SM, Cat D ¾ SM.

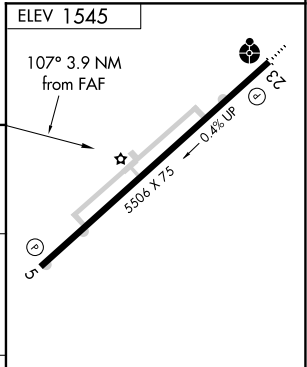
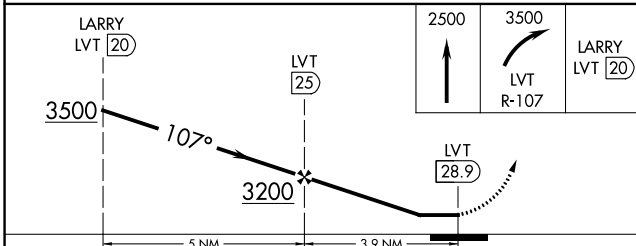
**MISSED APPROACH:** Climb to 2500 then climbing right turn to 3500 on LVT VOR/DME R-107 to LARRY/20 DME and hold.

AWOS-3 <b>135.025</b>	INDIANAPOLIS CENTER <b>124.625 371.925</b>	UNICOM <b>122.8 (CTAF)</b>
--------------------------	---	-------------------------------



SE-1, 25 FEB 2021 to 25 MAR 2021

SE-1, 25 FEB 2021 to 25 MAR 2021



CATEGORY	A	B	C	D
<b>CIRCLING</b>	2040-1 495 (500-1)	2040-1¼ 495 (500-1¼)	2200-1¾ 655 (700-1¾)	2260-2¼ 715 (800-2¼)

MRL Rwy 5-23  
REIL Rws 5 and 23