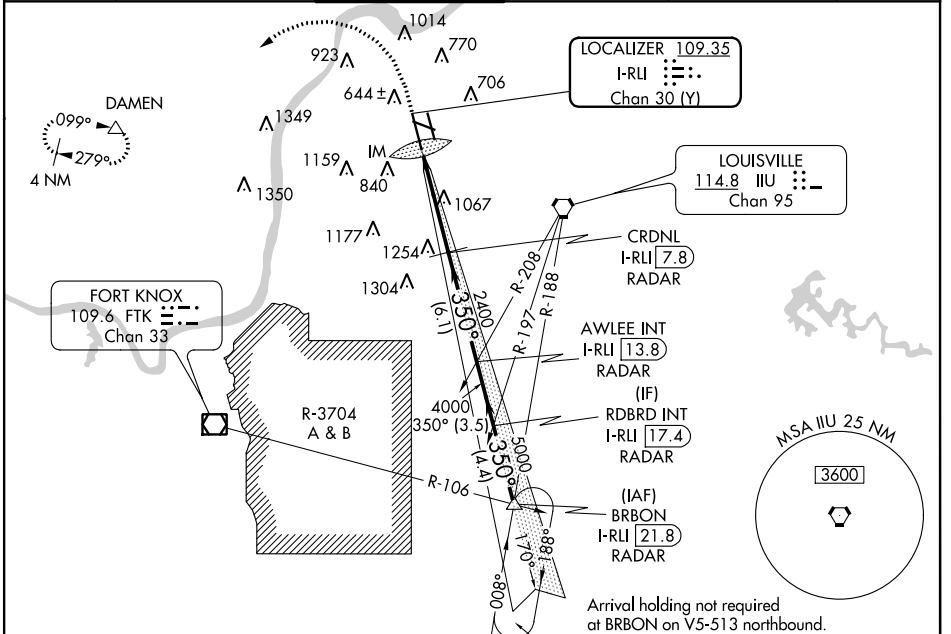


LOC/DME I-RLI 109.35 Chan 30 (Y)	APP CRS 350°	Rwy Idg TDZE 464 Apt Elev 501	10000
--	------------------------	---	--------------

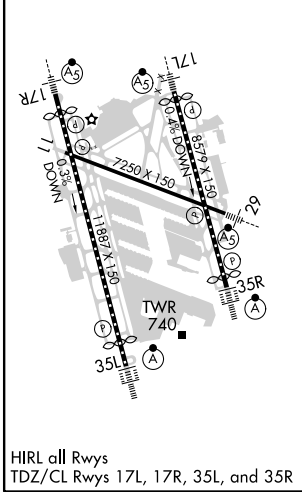
ILS RWY 35L (CAT II & III)

LOUISVILLE MUHAMMAD ALI INTL (SDF)

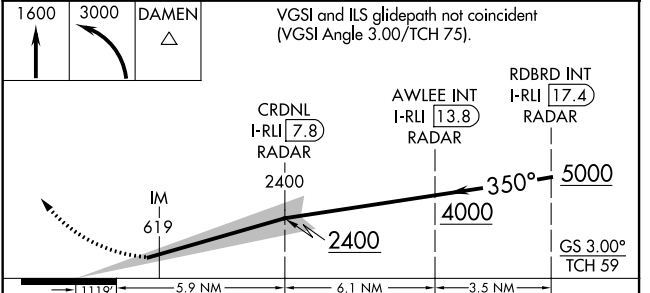
RNAV 1-GPS required. DME or RADAR required.		ALSF-2 	MISSED APPROACH: Climb to 1600 then climbing left turn to 3000 direct to DAMEN and hold. (GPS required)	
Simultaneous approach authorized. CAT II: RVR 1000 authorized with specific OPSPEC, MSPEC, or LOA approval and use of autoland or HUD to touchdown.				
D-ATIS 118.725	LOUISVILLE APP CON 132.075 327.0	LOUISVILLE TOWER 124.2 257.8	GND CON 121.7 348.6	CLNC DEL 126.1 275.8
			CPDLC	



ELEV 501	D	TDZE 464
-----------------	----------	-----------------



1600	3000	DAMEN	VGSi and ILS glidepath not coincident (VGSi Angle 3.00/TCH 75).



CATEGORY	A	B	C	D
S-ILS 35L	CAT II RA 99/12 100 DA 564			
S-ILS 35L	CAT III RVR 06			

CATEGORY II & III ILS - SPECIAL AIRCREW & AIRCRAFT CERTIFICATION REQUIRED

SE-1, 25 FEB 2021 to 25 MAR 2021

SE-1, 25 FEB 2021 to 25 MAR 2021